



101-090



101-076



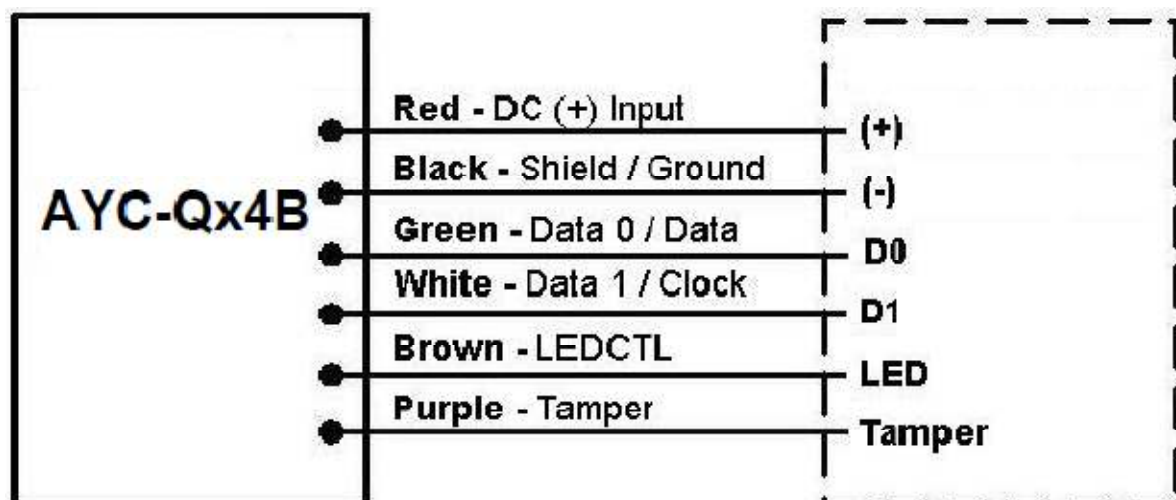
101-080



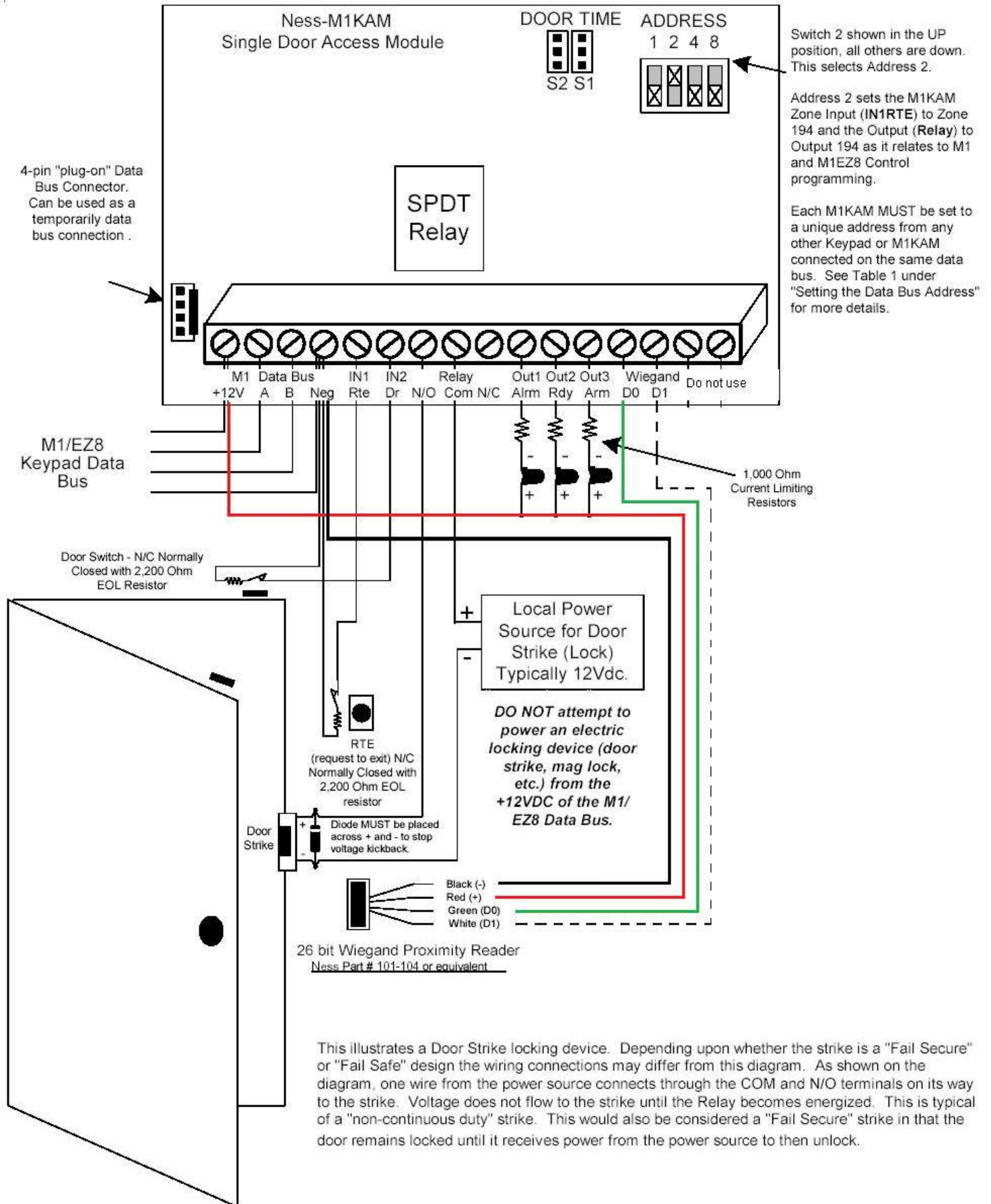
101-079

Quick Guide

PROX READER / PIN KEYPAD



Hook-up Diagram for Ness Access Control Module for the M1



This illustrates a Door Strike locking device. Depending upon whether the strike is a "Fail Secure" or "Fail Safe" design the wiring connections may differ from this diagram. As shown on the diagram, one wire from the power source connects through the COM and N/O terminals on its way to the strike. Voltage does not flow to the strike until the Relay becomes energized. This is typical of a "non-continuous duty" strike. This would also be considered a "Fail Secure" strike in that the door remains locked until it receives power from the power source to then unlock.

Enter Program mode

Factory Default: Press the # key 4 times
1234
(Transmit LED will turn off and Program LED will turn red.)
Enter your 4-digit installer code (Default: 1234)

Exit Program mode

Press # at any time to exit programming mode
(or if no buttons are pressed it will exit programming mode)

Selecting keypad transmission format

Note: Enter Programming mode
Only one transmission format can be used at any one time.
Press 1 - (the transmit LED will turn red)
Then you need to select a option from below:

	Option	Keypad transmission format
When Using M1: Press 1 then option 4. Or Press 1 then option 5, and you can have a 5 digit pin or 4 digits with # at the end.	1	Single Key, 6-Bit Wiegand (Rosslare Format)
	2	Single Key, 6-Bit Wiegand with Nibble + Parity Bits
	3	Single Key, 8-Bit Wiegand, Nibbles Complemented
	4	4 Keys Binary + Facility Code, 26-Bit Wiegand
	5	1 to 5 Keys + Facility Code, 26-Bit Wiegand
	6	6 Keys BCD and Parity Bits, 26-Bit Wiegand
	7	Single Key, 3x4 Matrix Keypad
	8	1 to 8 Keys BCD, Clock & Data Single Key

After you have made your selection it will then exit programming mode automatically. - (Transmit LED will turn red)

Examples

If you want to use a 4 digit number as the pin then do the following:
Set the transmission format to option 4 (4 Keys Binary + Facility Code, 26-Bit Wiegand) you would do the following: # # # # 1234 1 4

Or

You may want to enter # at the end of the number then do the following:
Set the transmission format to option 5 (1 to 5 Keys + Facility Code, 26-Bit Wiegand) you would do the following: # # # # 1234 1 5

Set a new Program code

Enter Program Mode

Press 3 - (the transmit LED will turn red)

Enter your new 4-Digit programming code

Once your programming code has been entered then it will exit programming mode automatically. - (Transmit LED will turn red)

Changing the facility code

Note:
Facility code can
range between
000 - 255

Enter Program Mode

Press 4 - (the transmit LED will turn red)

Enter the new 3 digit code you wish to set as the facility code.

Factory Default:
0

Once you have entered the new facility code then it will exit programming mode automatically. - (Transmit LED will turn red)

Factory Default Settings

Warning: This will erase the entire memory, settings and codes to factory default.

Enter Program Mode

Press 0 - (the transmit LED and Program LED will flash red)

Enter Program code to confirm (default: 1234)

Entering the wrong program code will exit programming mode and will return to normal mode and will not erase any memory.

Replace a lost programming code

Remove power from the unit

Activate the tamper by removing the reader from the wall or removing the readers case.

Apply power to the reader.

You now have 10 seconds to enter programming mode by using the factory default programming code of 1234.