

Chapter
1

STARWATCH iTDC PRO II Installation

This chapter explains STARWATCH iTDC PRO II installation.

STARWATCH iTDC PRO II is to run on data base of MS SQL Server 2000 or of MSDE.
Install one of the above data base servers. SQL server 2000 or MSDE must be installed to operate STARWATCH iTDC PRO II.

SQL Server Installation

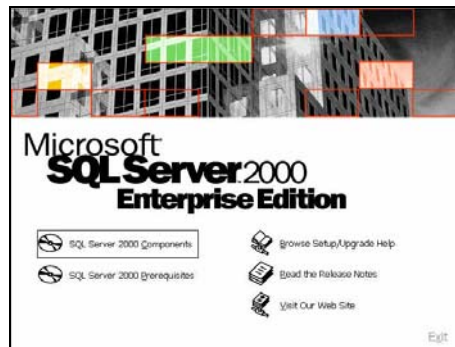
+ SQL Server 2000, data base server is required to operate STARWATCH iTDC PRO II.

Use SQL Server 2000 Enterprise Manager version or upper.

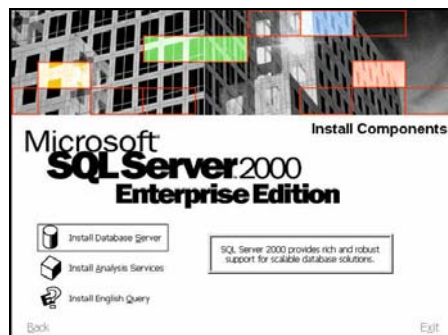
Recommend SQL Server 2000 Enterprise Edition.

SQL Server 2000 must be installed Windows 2000 Server only.

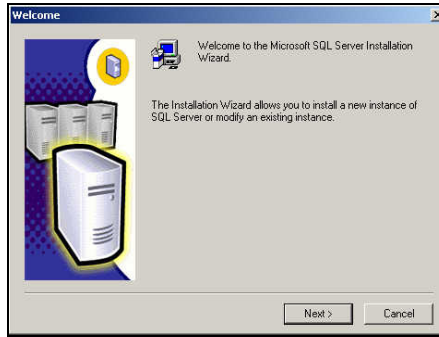
- 1) Select SQL Server 2000 Components.



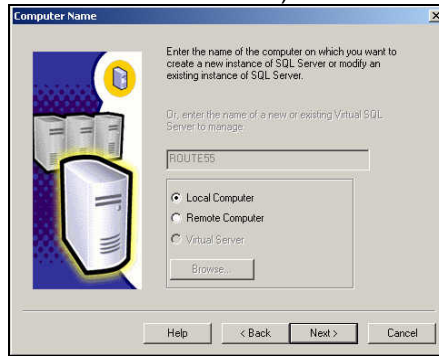
- 2) Install Database Server.



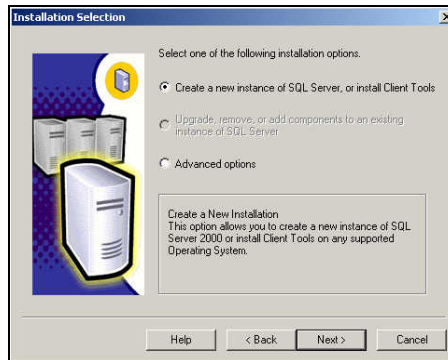
- 3) It shows Database Server initial installation window. Click Next to continue.



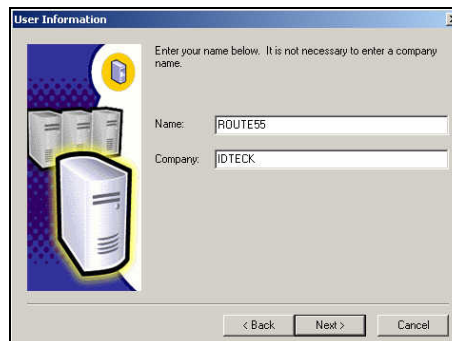
- 4) Select the computer to install Database Server. (Generally, install Database Server at the computer where to install STARWATCH ITDC PRO II.)



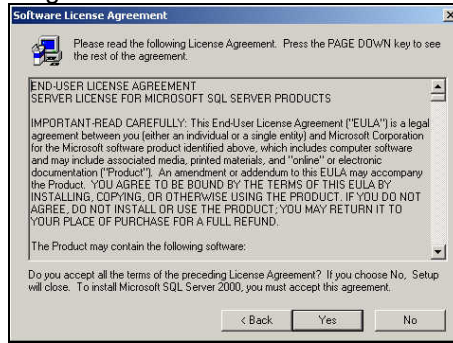
- 5) Install Database Server and Database Client Tools.



- 6) Type the computer name and company name of the computer where to install Database Server.



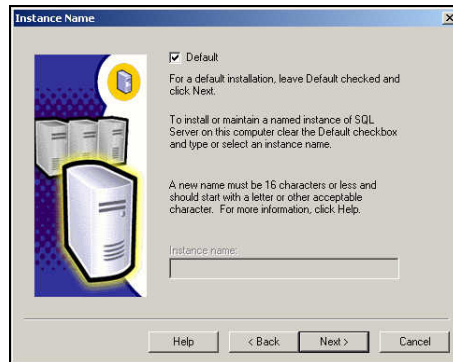
- 7) Click yes for Software License Agreement.



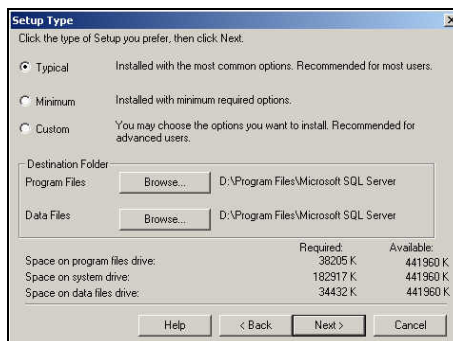
- 8) Select **Server and Client Tools** for component type as follows.



- 9) Type or select Database Server Instance Name. To name it same as the computer name check "default".



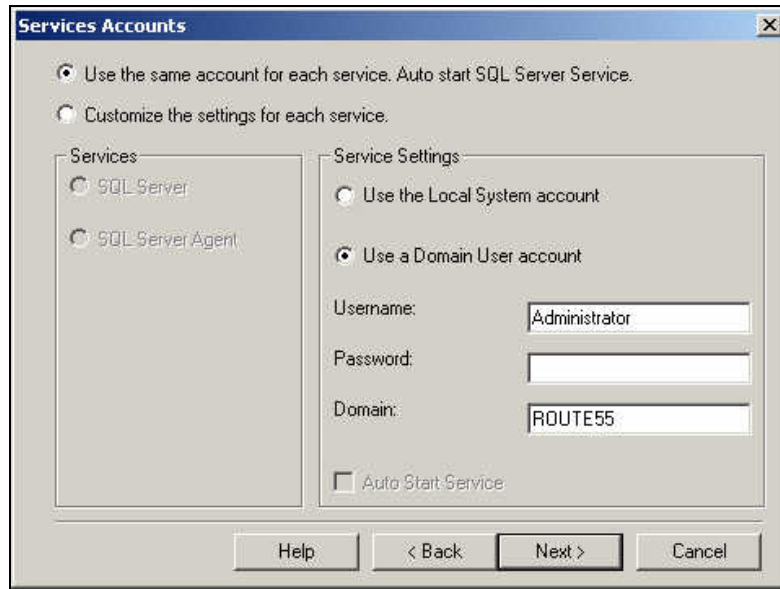
- 10) Select type of setup and location.
Generally, choose "Typical" and " program files".



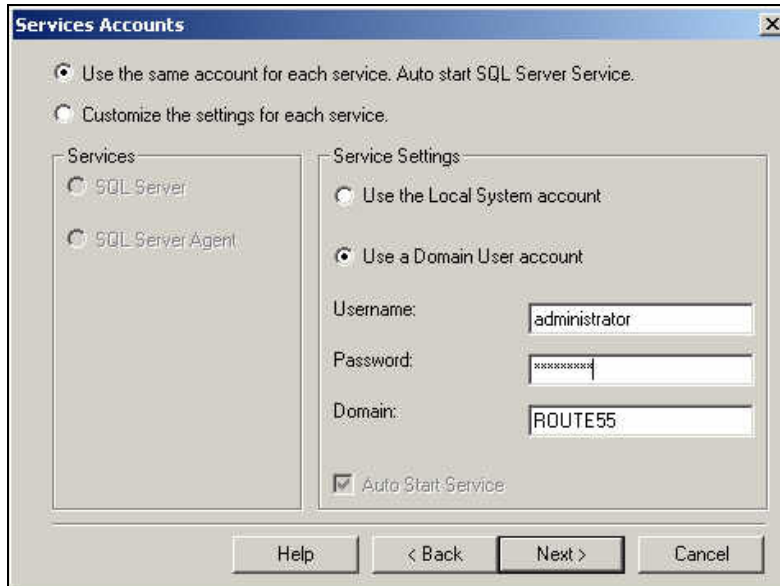
+ The following “ Account” related section is very important. Please follow the setup instruction carefully.

- 11) Select ‘Use the same account for each service. Auto start SQL Server Services’ for Services Accounts.
It makes SQL Server start automatically when OS is opened.

To use the computer system account as services account check ‘Use the Local System account’. To use a specific account, ‘Use a Domain User account’.

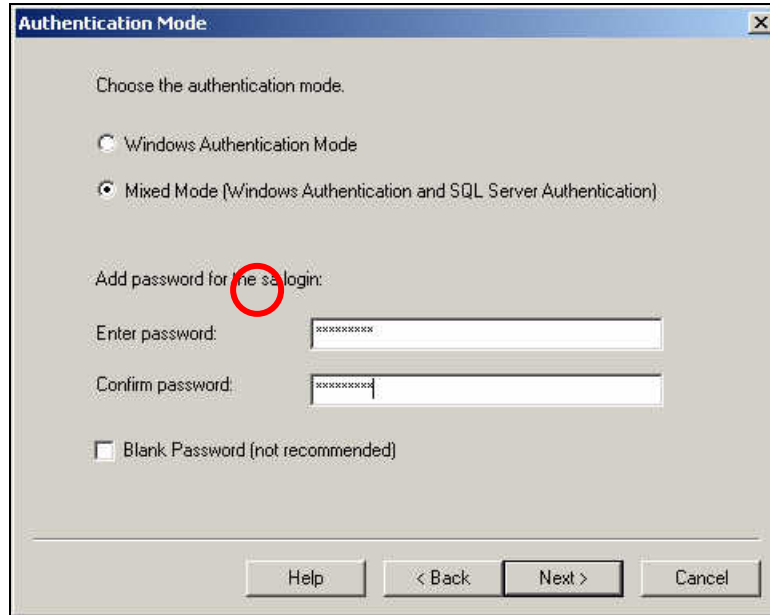


- 12) If select ‘Use a Domain User account’, type its password.

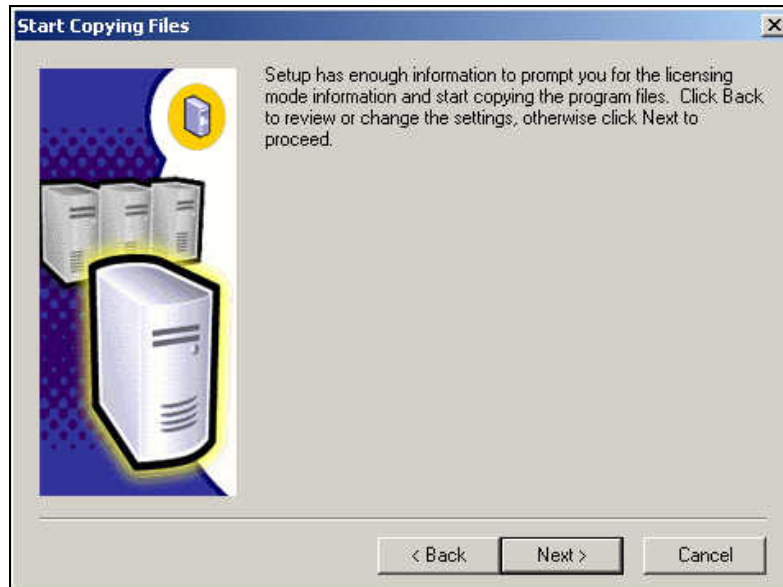


- 13) In case of Authentication Mode MUST choose **'Mixed Mode'**.
Type the password for SQL Server general user account **'sa'**.

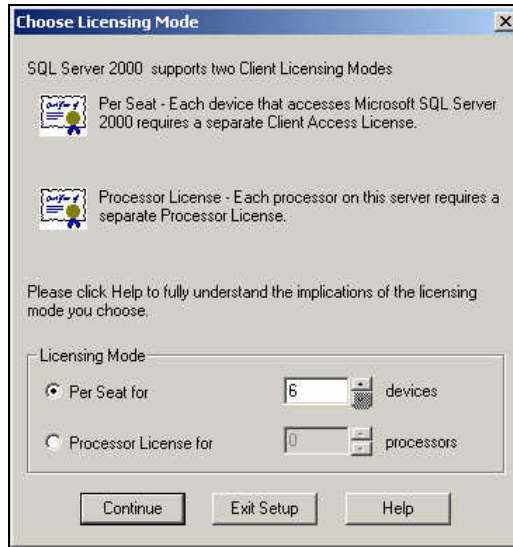
May use general password **'starwatch'**
Or for other specific password, type it.



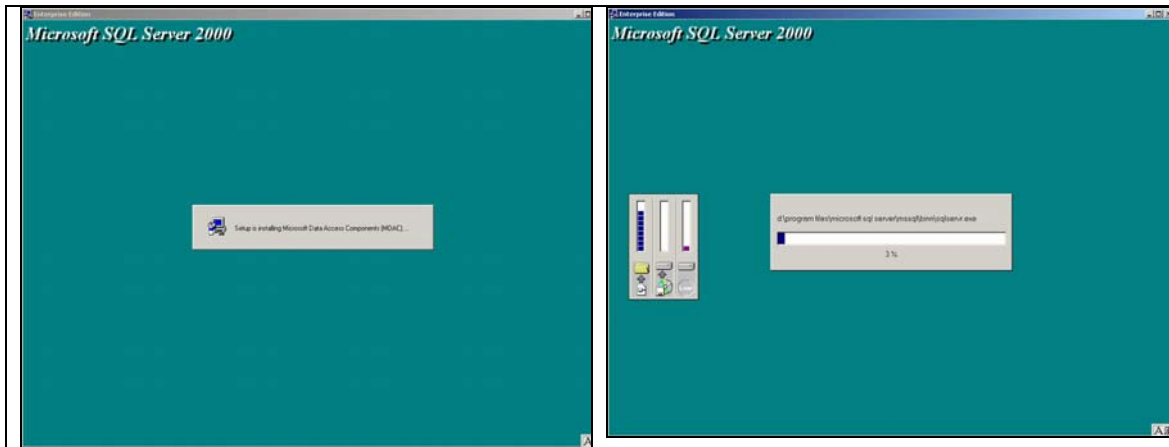
- 14) It starts file copy.



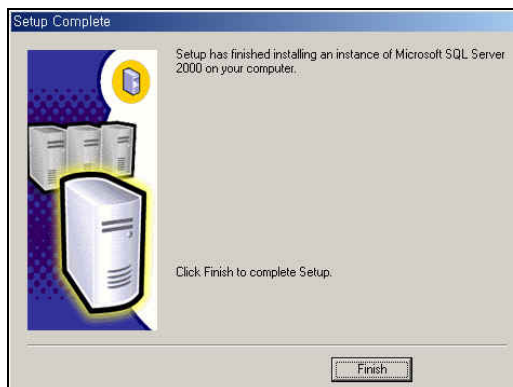
- 15) Set Licensing Mode as 'Per Seat'.
Select Device number Access control server + client number.
In case of Starwatch iTDC Pro client 5 units, server 1 + client 5 = 6.



- 16) It starts installation.



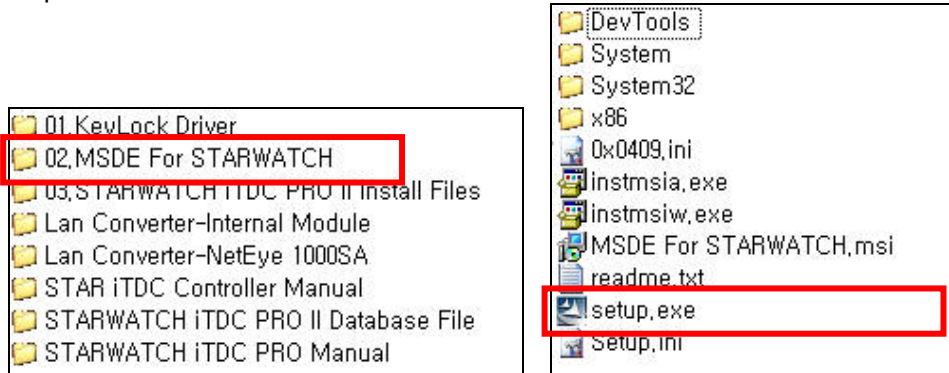
- 17) It finishes Database Server setup.



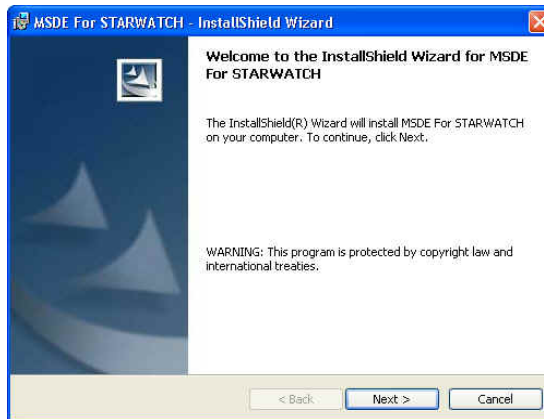
MSDE Installation

Find the MSDE install file in the STARWATCH ITDC PRO II CD of IDTECK.
 Use a MSDE management freeware or other tools in order to control the data base if necessary.

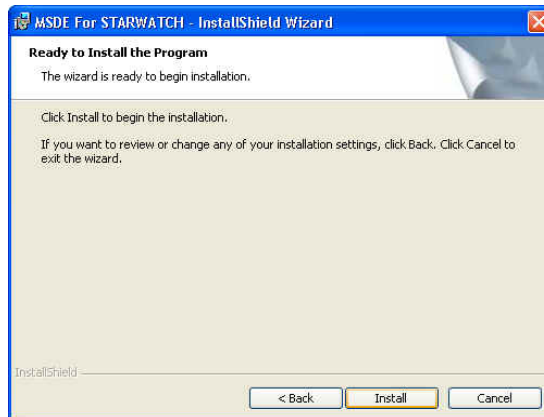
- 1) Choose "MSDE For STARWATCH" in STARWATCH ITDC PRO II CD.
 Run "Setup.exe" file.



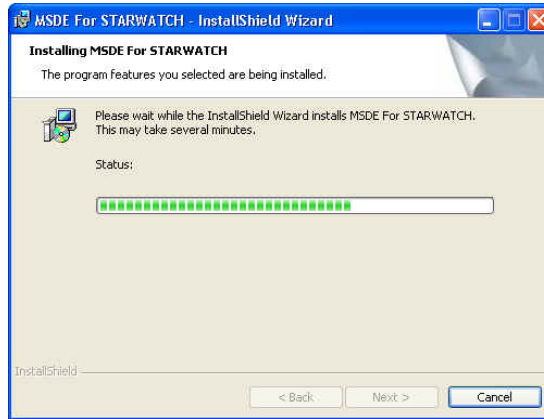
- 2) The window of MSDE installation will be showed as below. Click "Next" to process.



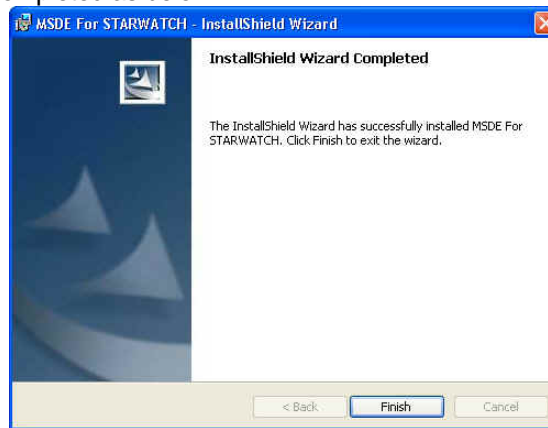
- 3) Click "Install" to start.



- 4) MSDE installation is to be processed as below. It may take some time depending on its system environment.



- 5) MSDE installation has completed as below.



The initial ID of MSDE is 'sa' and there is no initial password.

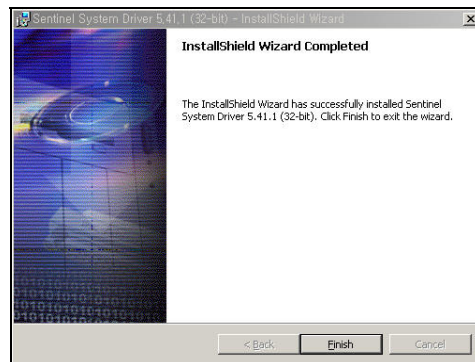
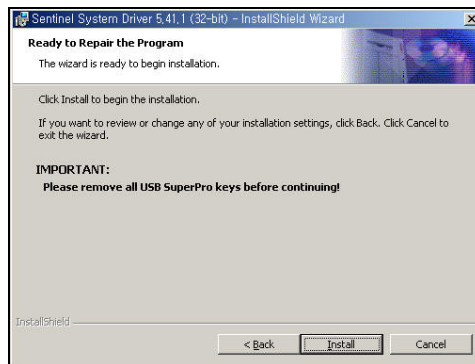
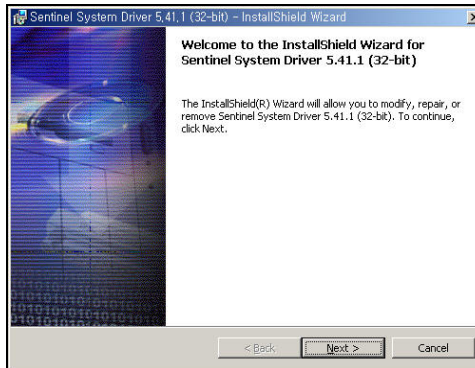
ID and password will be asked during the data base connection to STARWATCH iTDC PRO II.

STARWATCH iTDC PRO II Key lock Driver Setup

+ Software key lock must be installed to use STARWATCH iTDC PRO II , STARWATCH iTDC PRO II CL to control.

Key Lock driver also need to be installed to identify.

- 1) Run SSD5411-32bit.exe which is included in CD.
Follow the steps to install driver.



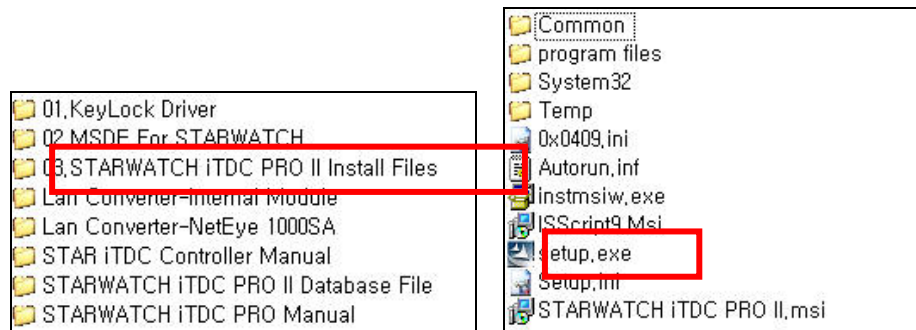
STARWATCH ITDC PRO II Installation

+ Install STARWATCH ITDC PRO II or STARWATCH ITDC PRO II CL.

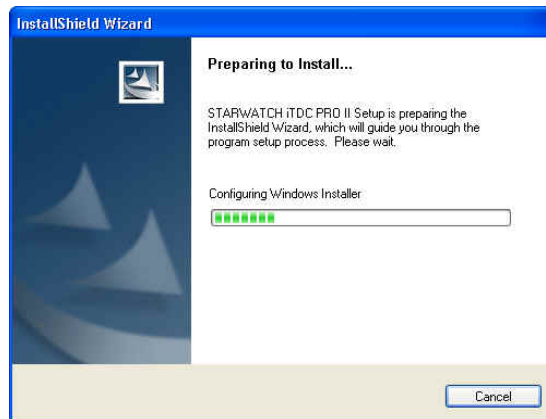
1) Choose STARWATCH ITDC PRO II Install files in STARWATCH ITDC PRO II CD.

+ Run setup.exe of STARWATCH ITDC PRO II for Server installation.

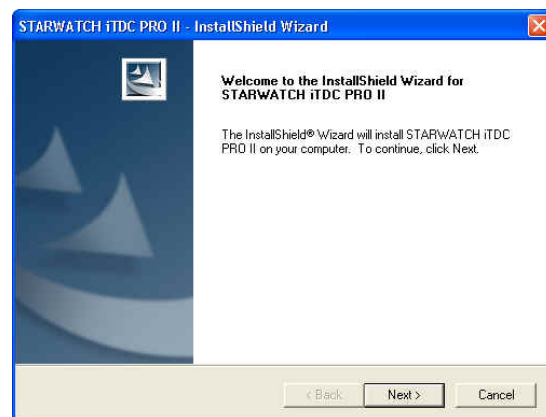
+ Run setup.exe of STARWATCH ITDC PRO II CL for Client installation.



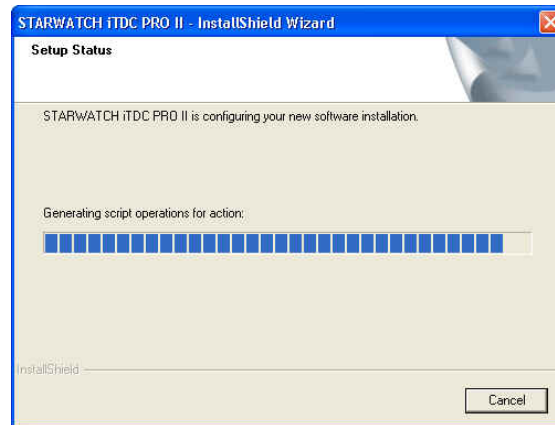
2) Its installation window is to be showed as below.



3) Click "Next " to start.



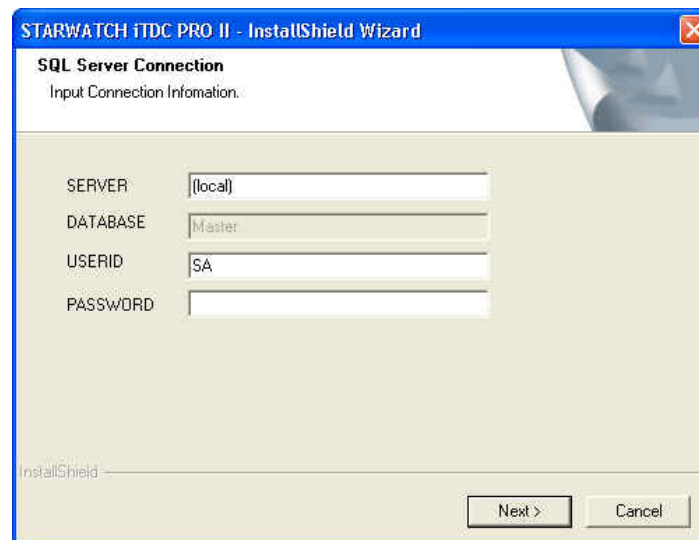
- 4) Installation will be processed as blow. It may take some time depending on its system environment. .



- 5) Data base server connection window shows as blow. (In case of server only)
In this session, it creates data base files connection to its data base.

Prior to the data base file creation, SQL Server or MSDE must be installed.

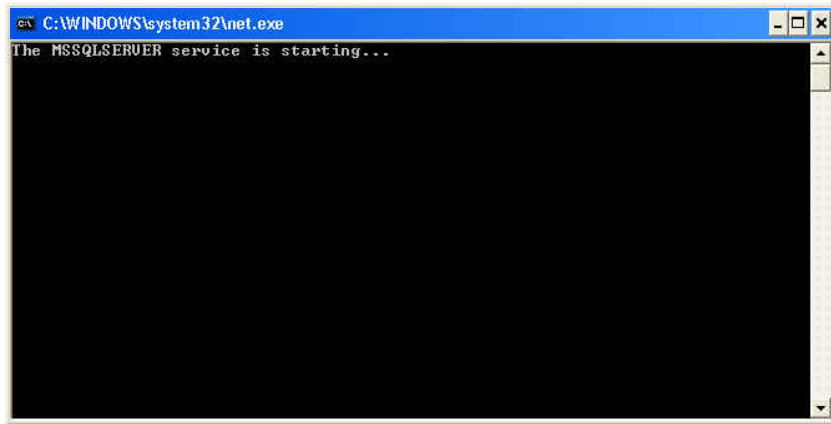
In case of SQL server 2000, you may skip this data base file creation session and creates manually later referring data base setting part of this manual.



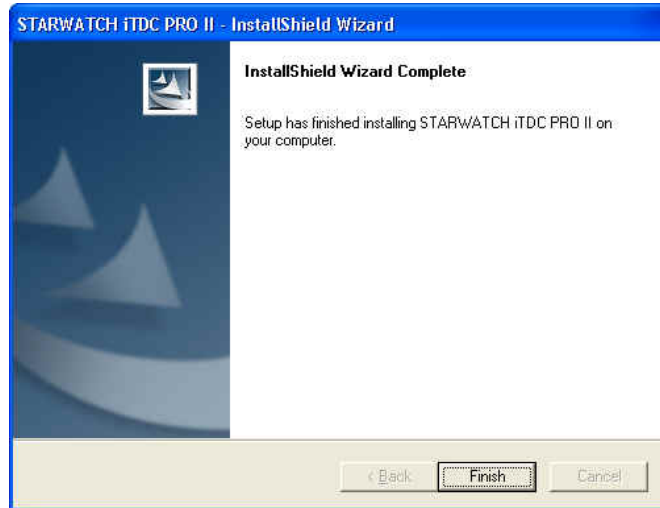
- . **SERVER** : Put the IP of PC installed Server. If the server is installed in Local PC, you may put **(local)** , **localhost**.
- . **USERID** : Put user ID of SQL Server or MSDE. Initial ID is '**sa**'.
- . **PASSWORD** : Put user password of SQL Server or MSDE. In case of MSDE, there is no initial user password.

- 6) Once it connects to data base, the installation program starts creation of data base files.

It may take time depending on its system environment.



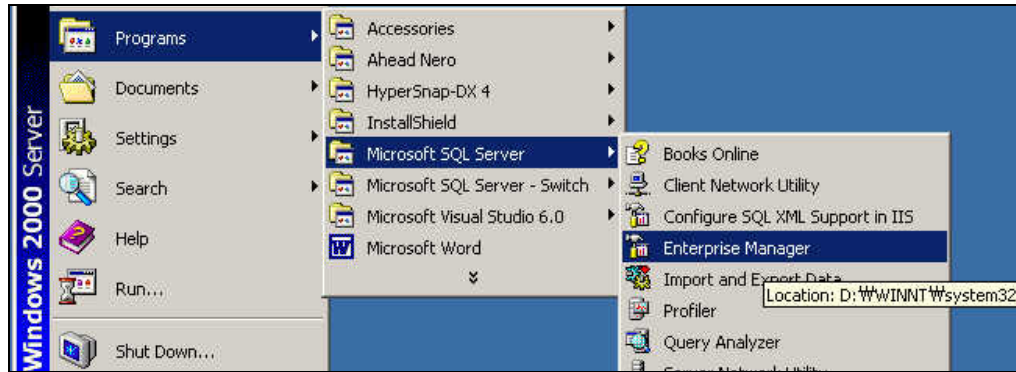
- 7) Finishing database creation, installation is to be completed.



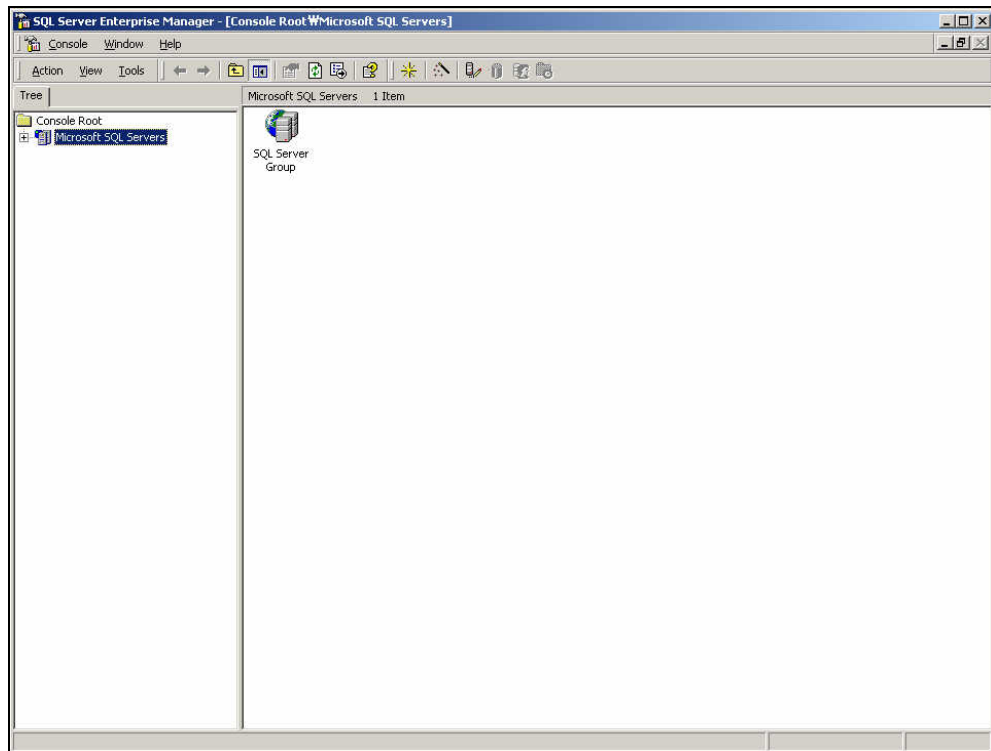
Database Definition (SQL SEVER) – Manual Setting

- + The followings are the instruction of database setup for Access Control System.
- + SQL Server must be installed prior to the following process.

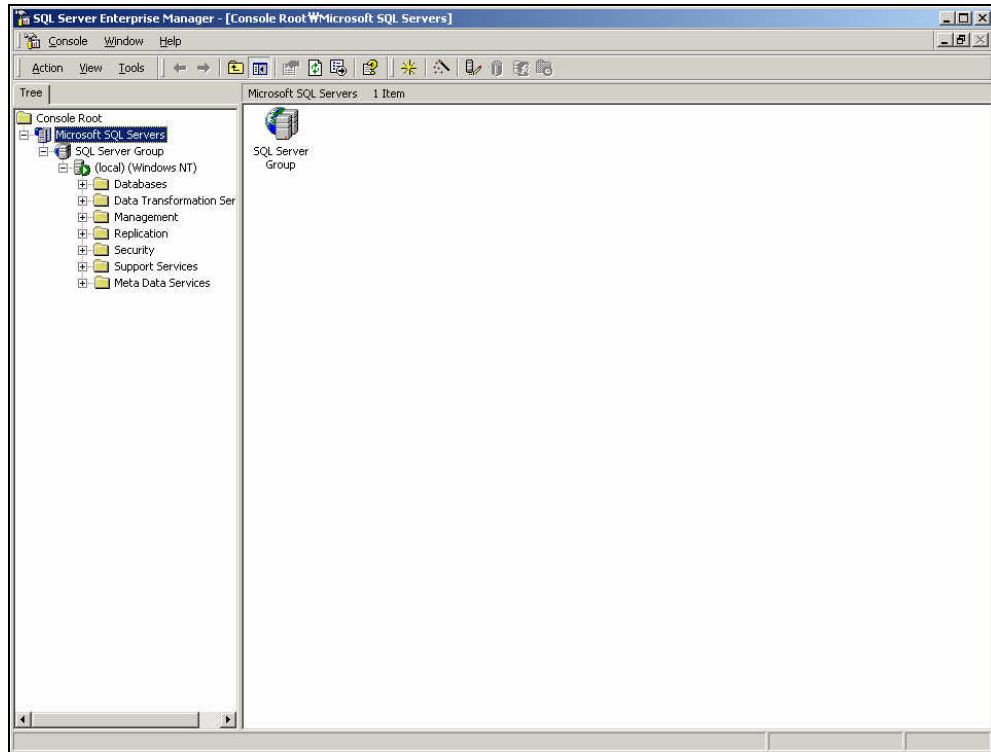
- 1) Open Enterprise Manager of SQL Server.
Location : START->Programs->Microsoft SQL Server->Enterprise Manager



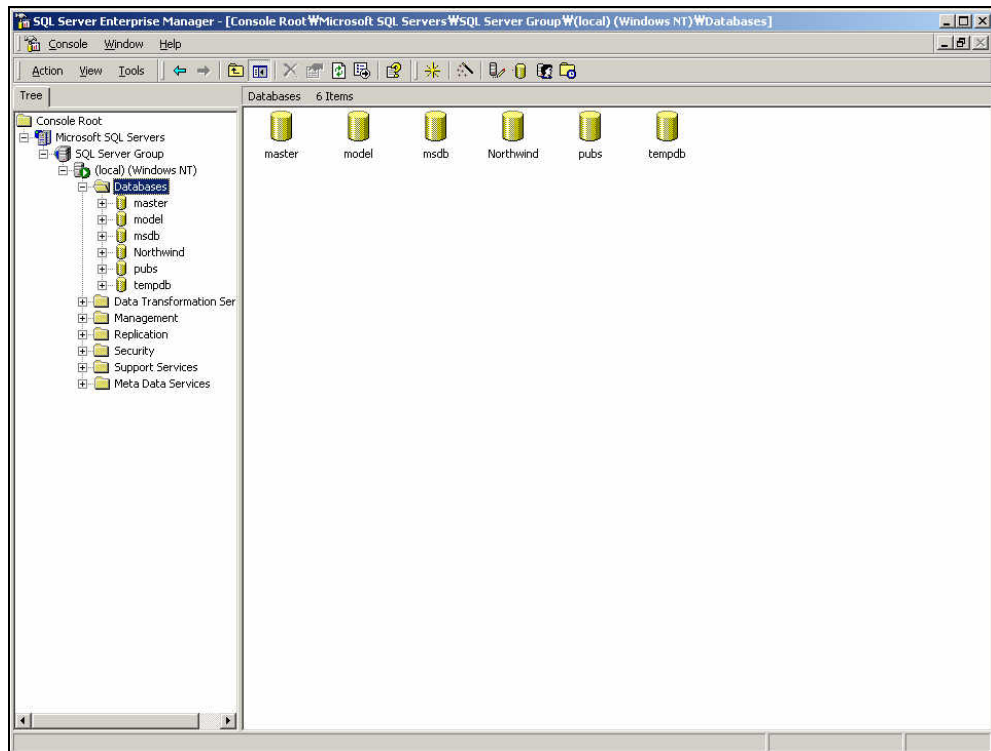
- 2) Enterprise Manager shows the following screen.



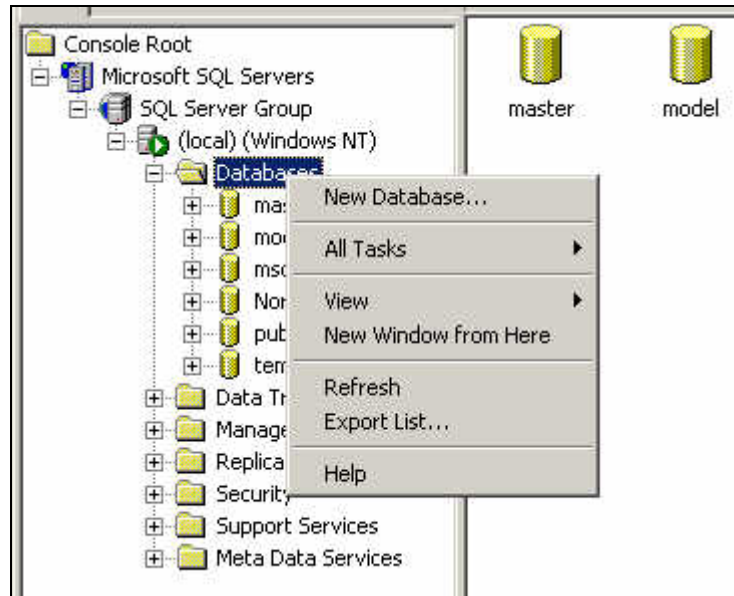
- 3) Click Microsoft SQL Servers and select SQL Server installed.



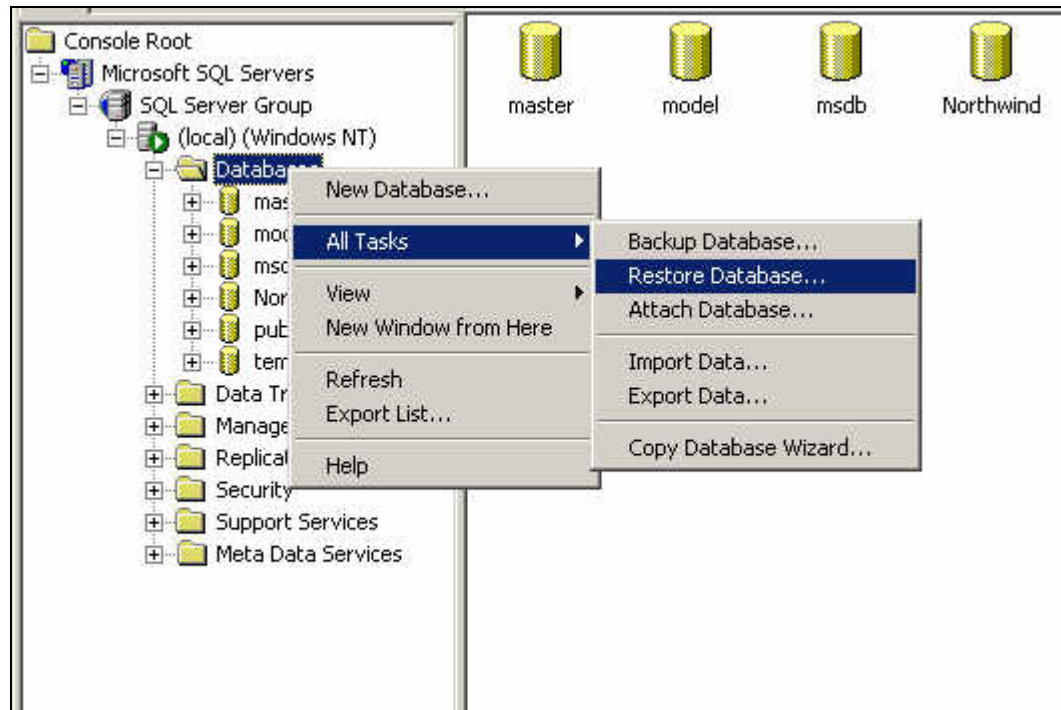
- 4) Click Databases then it shows basic data bases installed.
Here the database of STARWATCH ITDC PRO II is to be set.



5) From Databases, click right mouse key or click 'Action', then it shows menu as below .

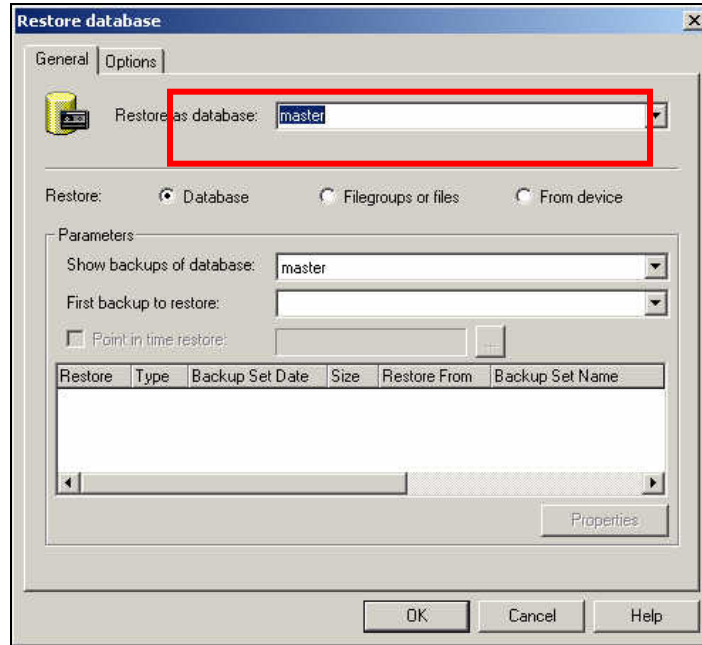


6) Choose 'All Tasks' then 'Restore Database' to open it.

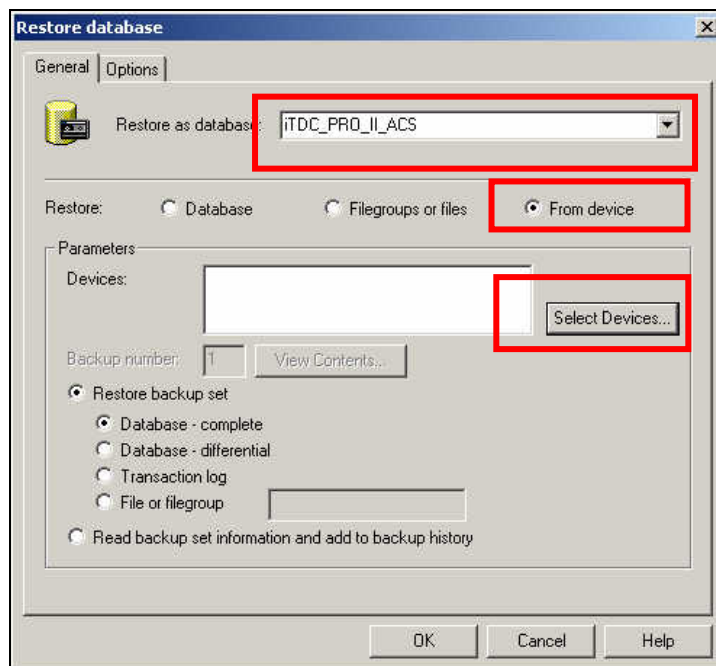


ITDC_PRO_II_ACS Database Setup

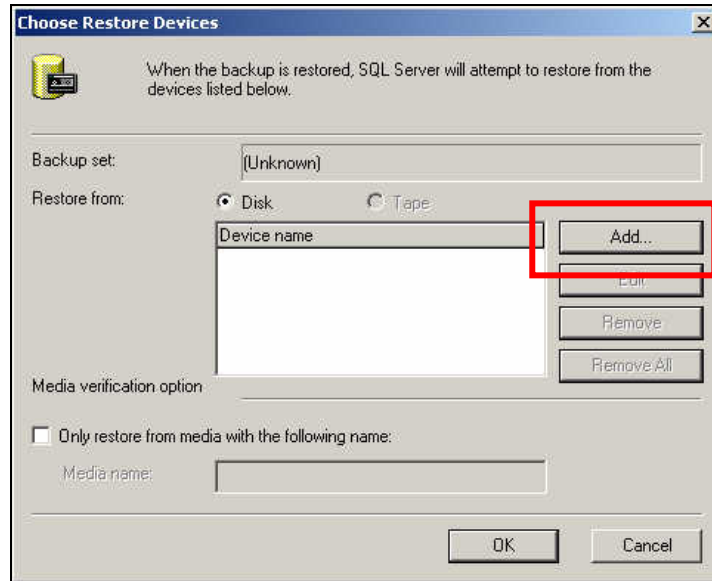
- 1) It shows the following screen when you open Restore Database.
'Restore as databases' is to be 'master'.



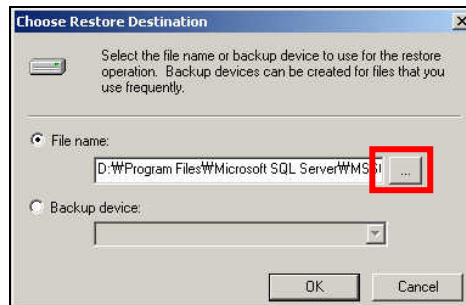
- 2) Delete 'master' in 'Restore as databases' delete 'master' And type in 'ITDC_PRO_II_ACS' as below.
Select 'From Device' in Restore. Click **Select Devices** button.



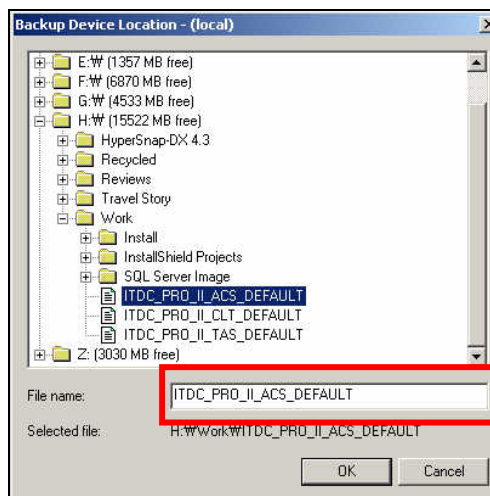
- It shows the following screen.
Click **Add** button and find data base file of iTDC_PRO_II_ACS.



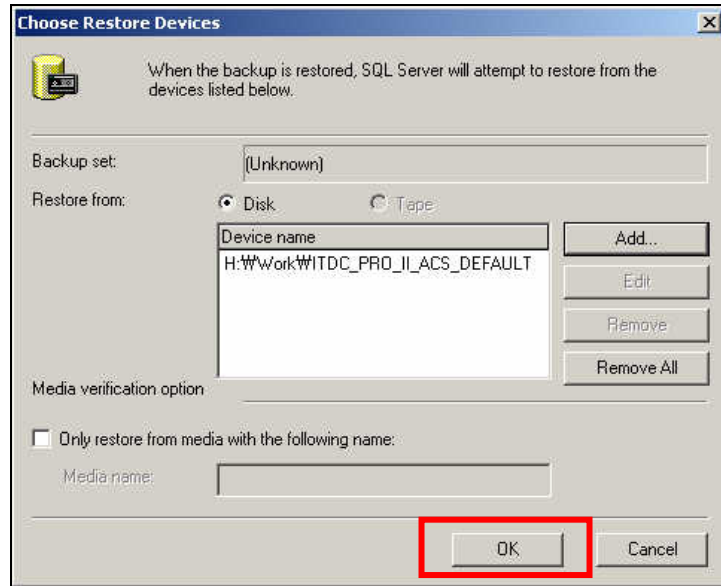
- Clicking "Add" button brings the following window.
Click '...' button to find the file.



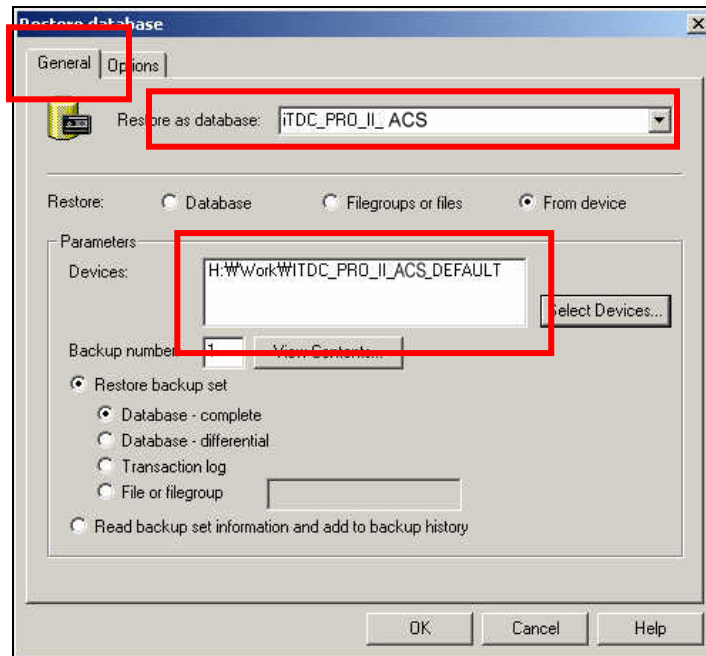
- Find iTDC_PRO_II_ACS database file and click ok.
The file will be in the CD of the Starwatch iTDC Pro II distributed by IDTECK.



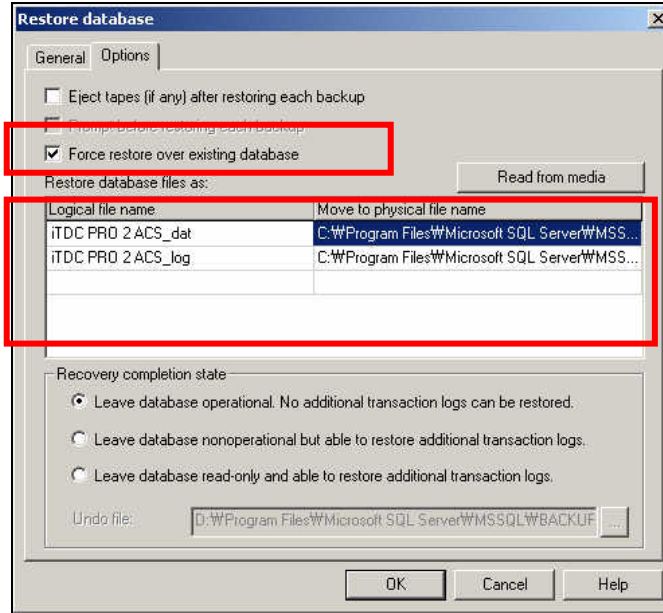
- 6) If select Database file, it will display the location of the file. Click OK.
(The location will be different from the one shown below.)



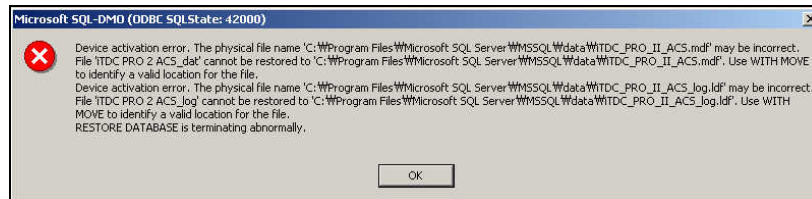
- 7) From the database info of the file, it will create its own iTDC Pro II ACS.
Click "Option"



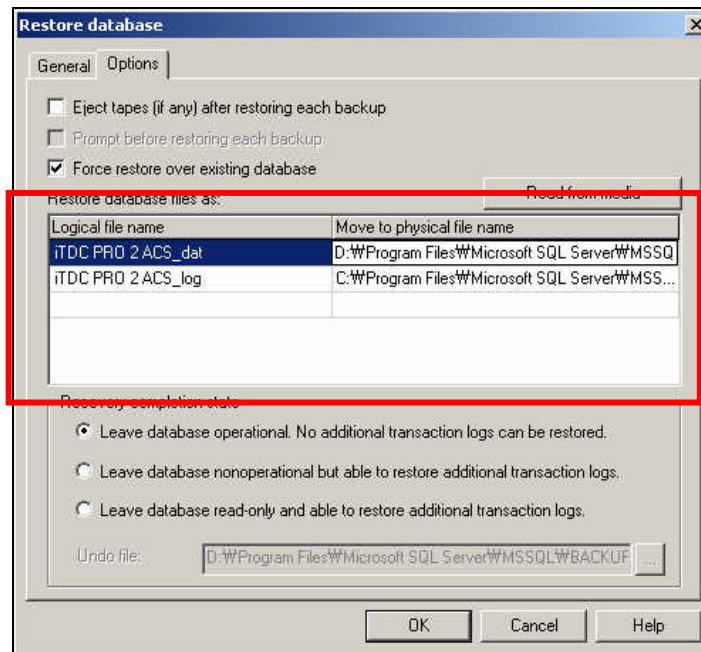
- 8) Select '**Force restore over existing database**'.
The location below is of database to be installed.



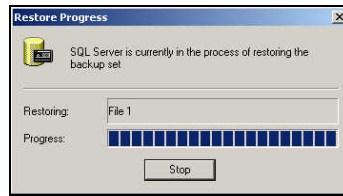
- 9) If it shows the following error message, change the location of file to be installed referring 10. If it does not, go to 11.



- 10) The error shown in 9, occurs the location of database installed is not proper. In this case, set its location as the folder where SQL Server is installed.



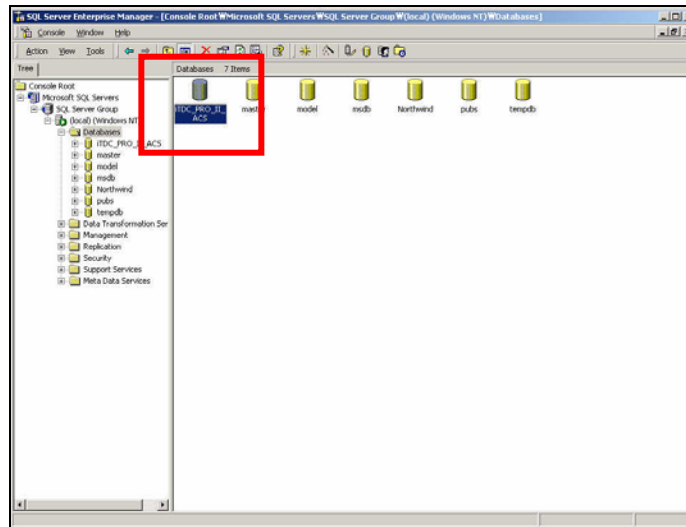
11) If finished the above process click OK button then it shows the following window.



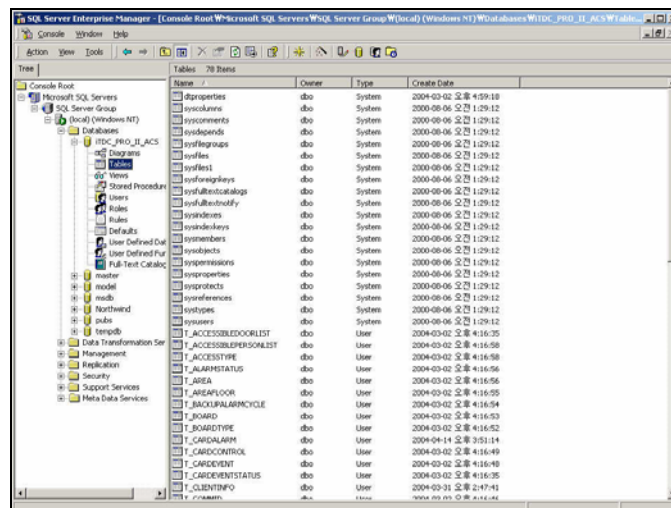
12) Now, the database creation of iTDC_PRO_II_ACS is completed.



13) Check the database created in Enterprise Manager.



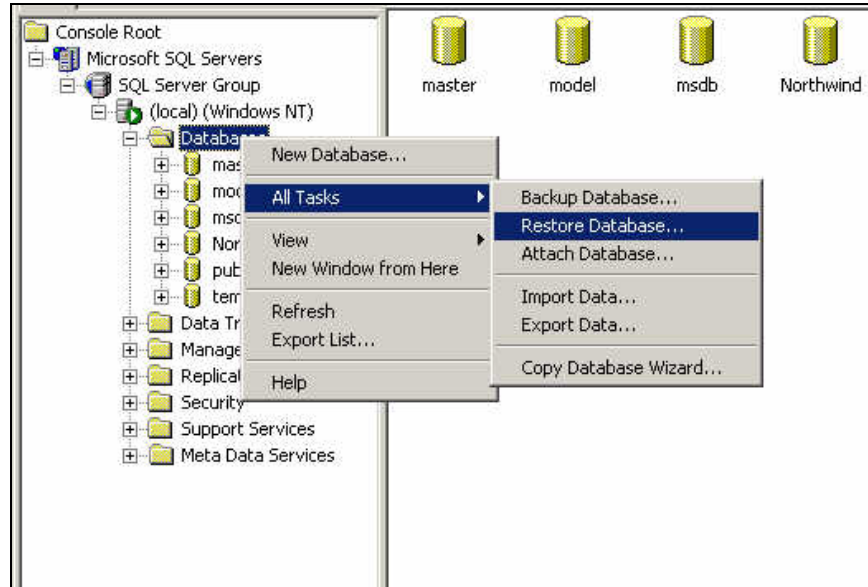
14. If the database creation process is completed properly, it shows access control data tables as blow.



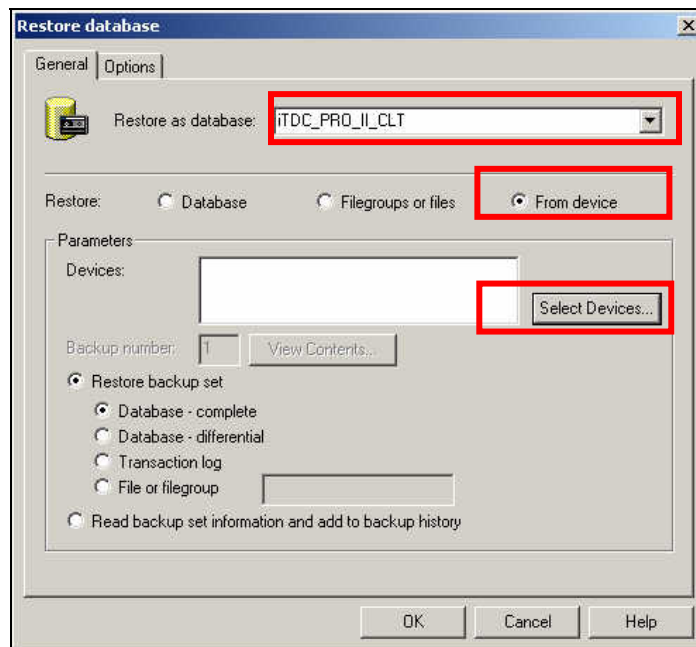
ITDC_PRO_II_CLT Database Setup

The structure of ITDC_PRO_II_CLT database is similar with ITDC_PRO_II_ACS.

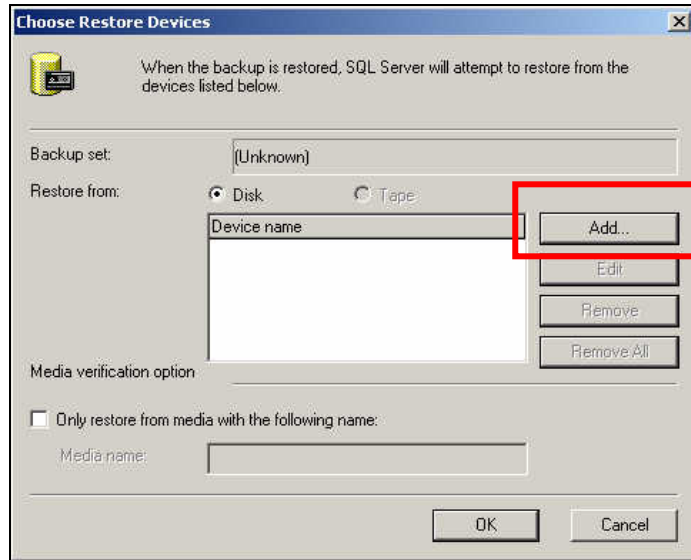
- 1) Select 'All Tasks' from menu and click 'Restore Database'



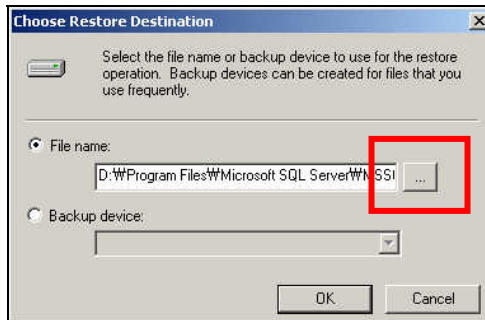
- 2) Delete 'master' from 'Restore as databases'. After delete, enter 'ITDC_PRO_II_CLT' as shown below. Select 'From Device' from restore part. Click 'Select Devices'.



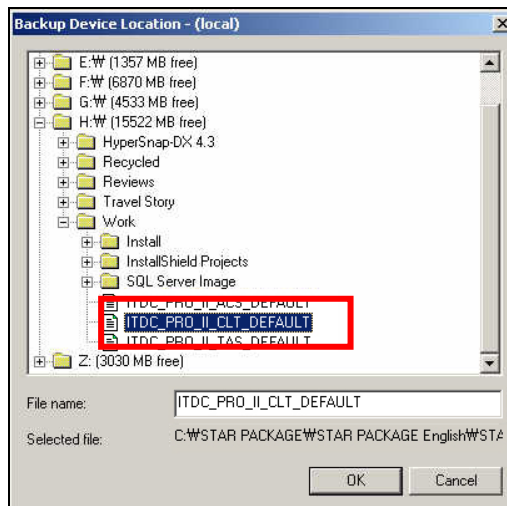
- Below screen is shown after clicking 'Select Devices'.
click **Add** to find file which contains iTDC_PRO_II_CLT.



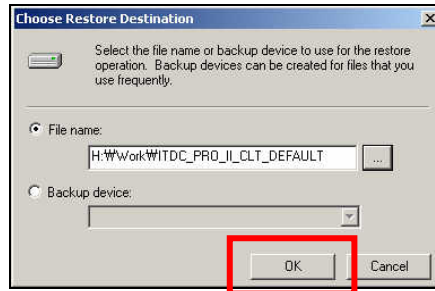
- Click add to see screen below.
Click '...' button find file.



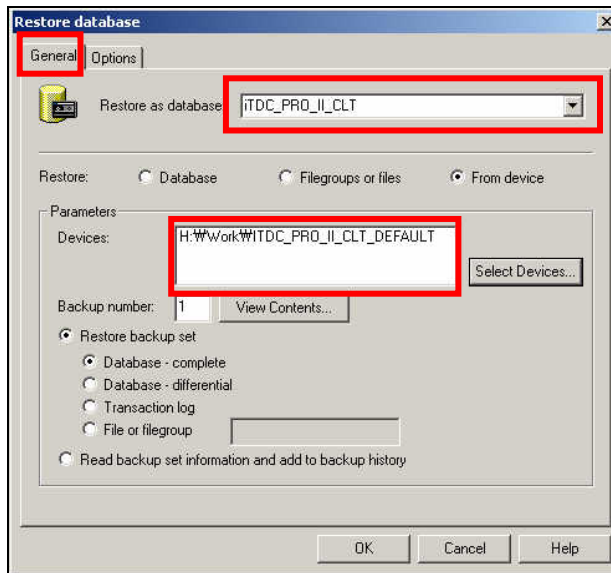
- Find iTDC_PRO_II_CLT date base file.
Following files are included in CD and click ok after finding the file.



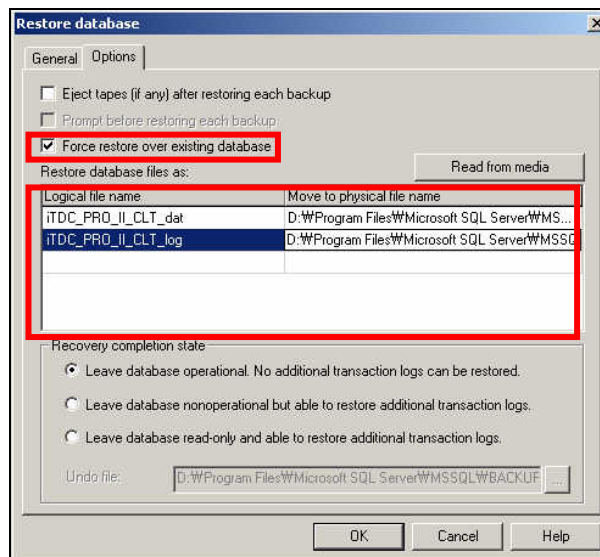
- 6) Location will be indicated after database file is selected. Click OK. Real location may be different with shown below.



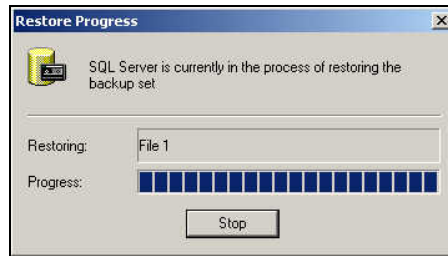
- 7) User can create database by importing file at ITDC_PRO_II_CLT. Select Option



- 8) Select 'Force restore over existing database'. The location below shows where database is installed.



9) Click OK and the picture below is shown.

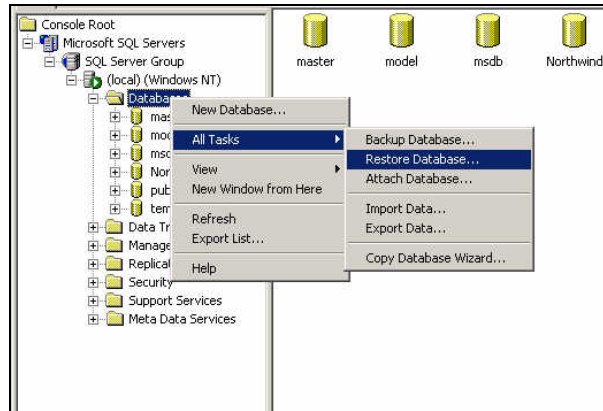


10) Database for iTDC_PRO_II_CLT is created.

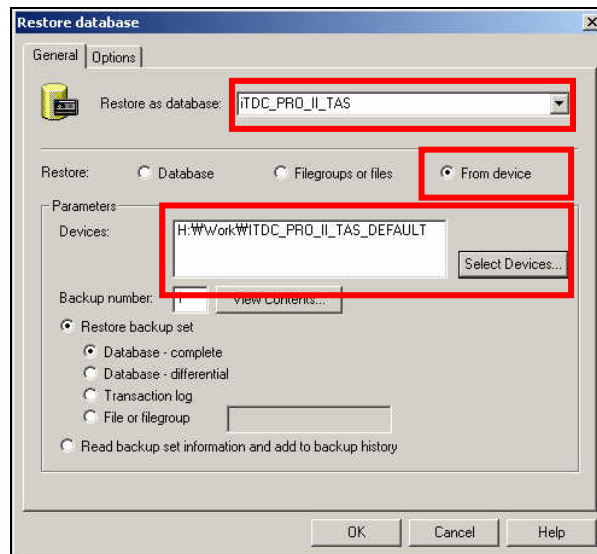
ITDC_PRO_II_TAS Database Setup

The structure of iTDC_PRO_II_TAS database is similar with iTDC_PRO_II_ACS

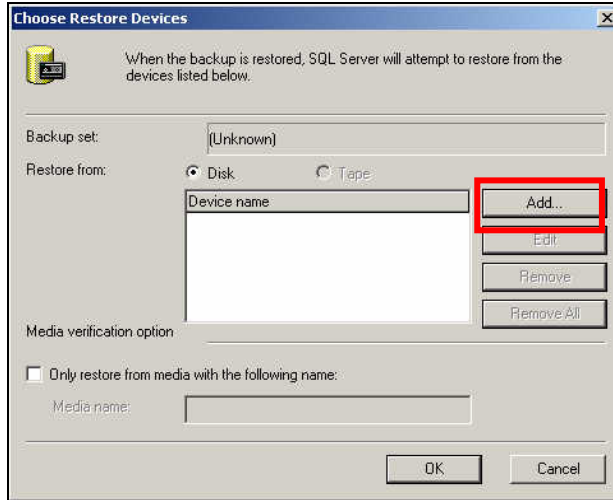
- 1) Select '**All Tasks**' from menu and click '**Restore Database**'.



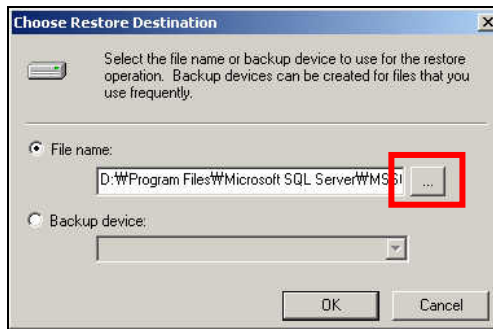
- 2) Delete 'master' from '**Restore as databases**'
After delete, enter '**iTDC_PRO_II_TAS**' as shown below.
Select '**From Device**' from restore part. Click **Select Devices**



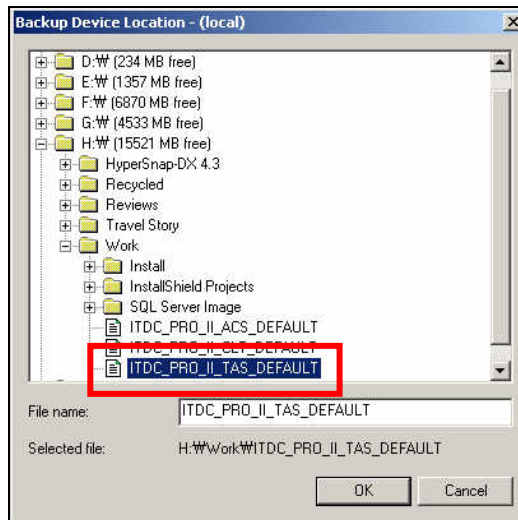
- 3) Below screen is shown after clicking 'Select Devices'.
click **Add** to find file which contains iTDC_PRO_II_TAS.



4) Click add to see screen below. Click ‘...’ button find file.



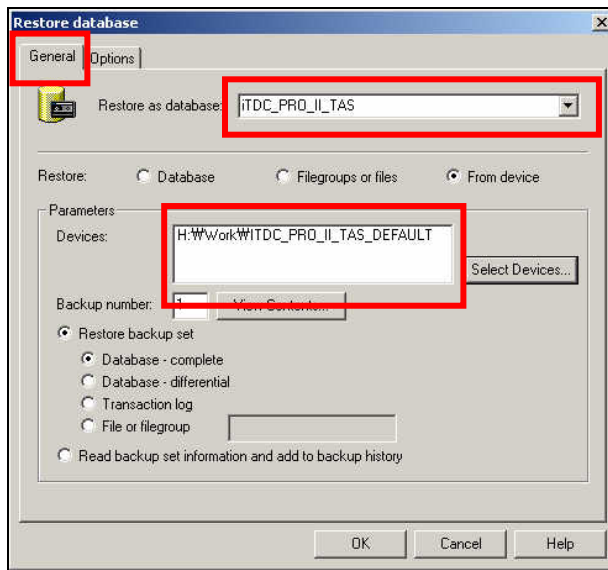
5) Find ITDC_PRO_II_TAS date base file.
Following files are included in CD and click ok after finding the file.



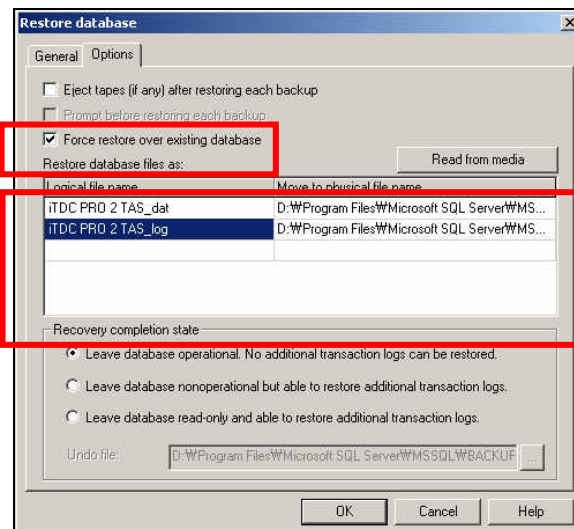
- 6) Location will be indicated after database file is selected. Click OK. Real location may be different with shown below.



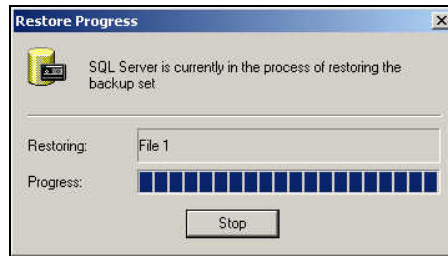
- 7) User can create database by importing file at **ITDC_PRO_II_TAS**. Select Option



- 8) Select **'Force restore over existing database'**. Following location shows where database is installed.

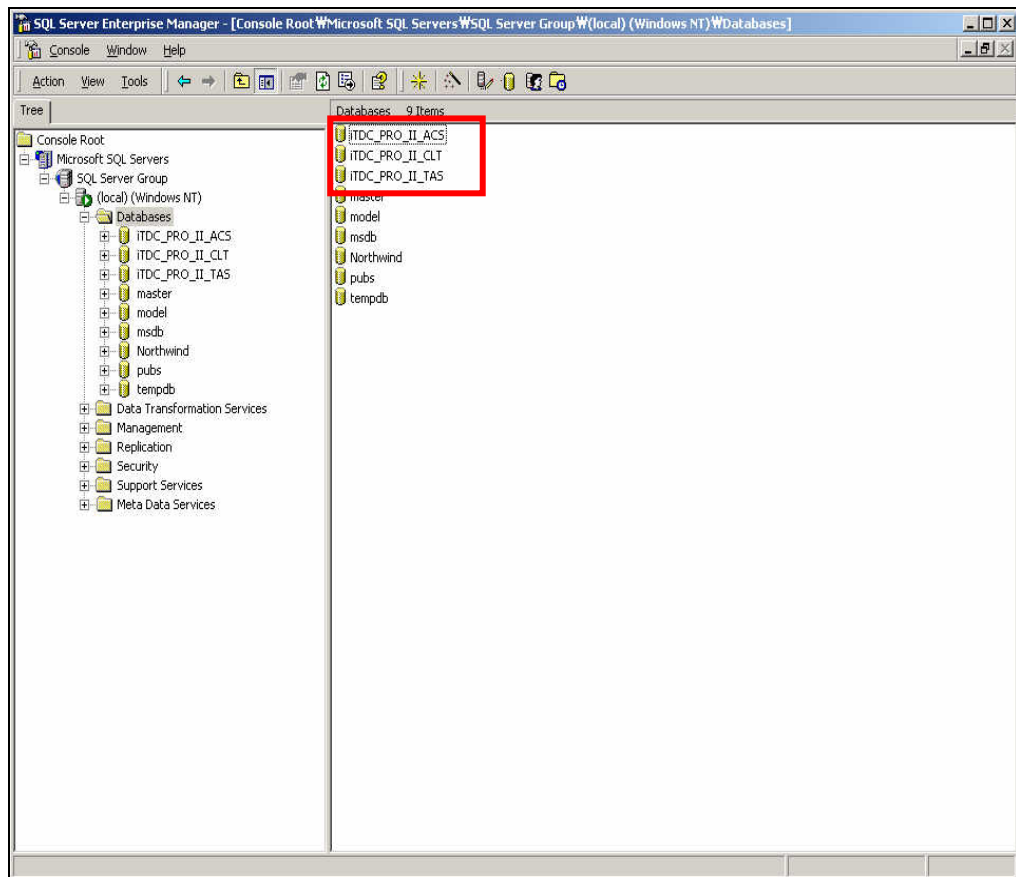


9) Click OK to finish.



10) iTDC_PRO_II_TAS database is created.

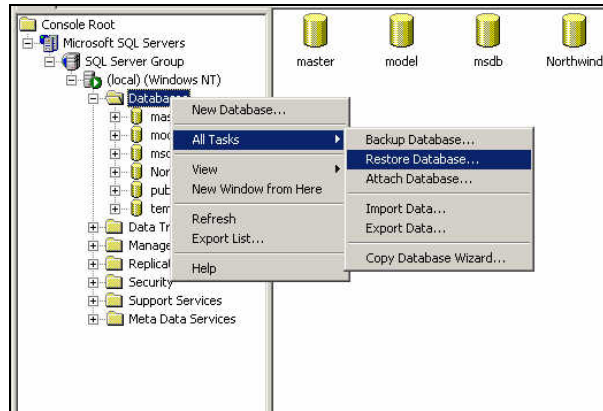
All setting for database is completed. .
Check from Enterprise Manager as shown below.



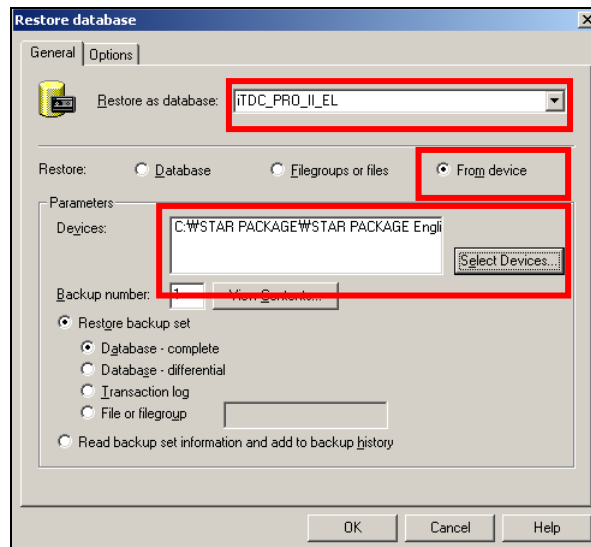
ITDC_PRO_II_EL Database Setup

The structure of iTDC_PRO_II_EL database is similar with iTDC_PRO_II_ACS

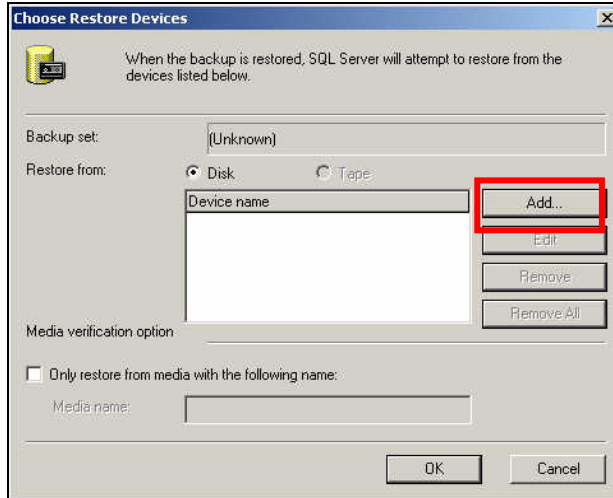
- 11) Select '**All Tasks**' from menu and click '**Restore Database**'.



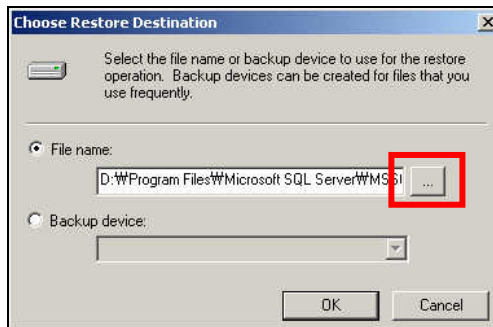
- 12) Delete 'master' from '**Restore as databases**'
After delete, enter '**iTDC_PRO_II_EL**' as shown below.
Select '**From Device**' from restore part. Click **Select Devices**



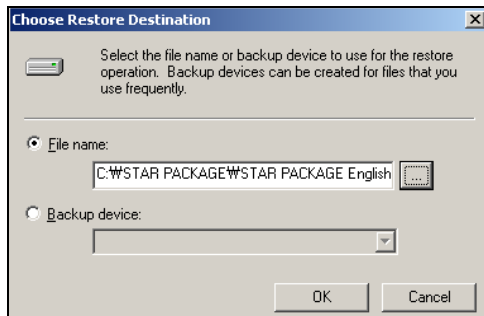
- 13) Below screen is shown after clicking 'Select Devices'.
click **Add** to find file which contains iTDC_PRO_II_EL.

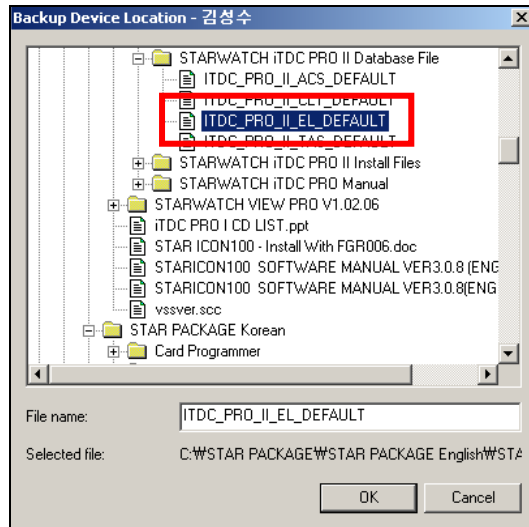


14) Click add to see screen below. Click ‘...’ button find file.

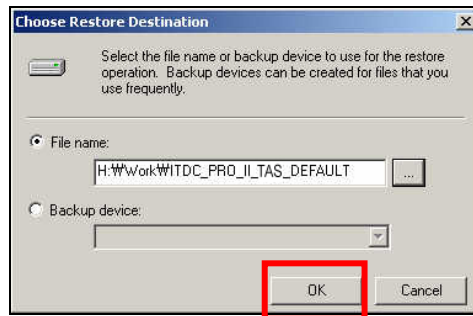


15) Find ITDC_PRO_II_EL date base file.
Following files are included in CD and click ok after finding the file.

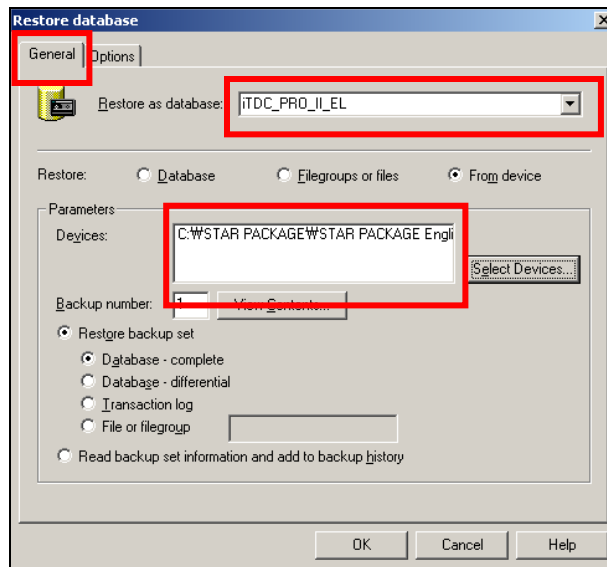




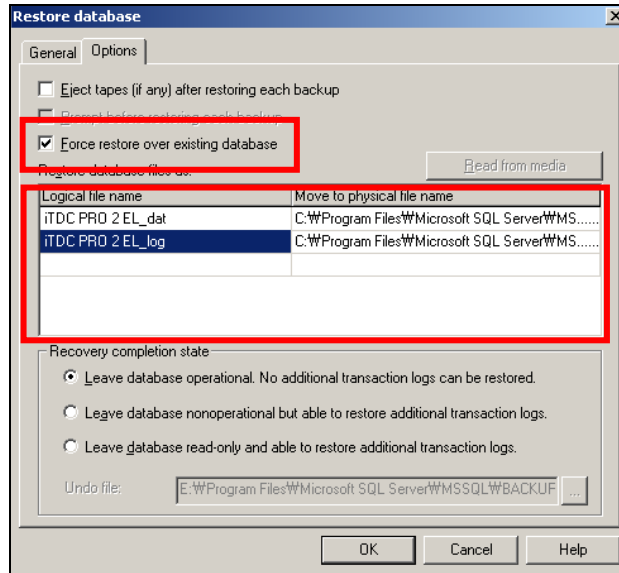
- 16) Location will be indicated after database file is selected. Click OK.
Real location may be different with shown below.



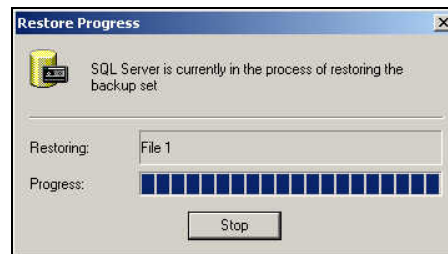
- 17) User can create database by importing file at **ITDC_PRO_II_EL**. Select Option



- 18) Select '**Force restore over existing database**'.
Following location shows where database is installed.



- 19) Click OK to finish.



- 20) iTDC_PRO_II_EL database is created.

All setting for database is completed. .
Check from Enterprise Manager as shown below.

Database Definition (MSDE) – Manual Setting

MSDE Manager (Vale Software) Briefing

MSDE installation could cause difficulty in database setup and operation because there is no manager tool. In this case you can purchase or download manager tool by internet. In here we will introduce MSDE Manger program briefly which is developed and sold in Vale Software.

MSDE Manager Program makes it easier to operate MSDE. Also below functions are available by using this program.

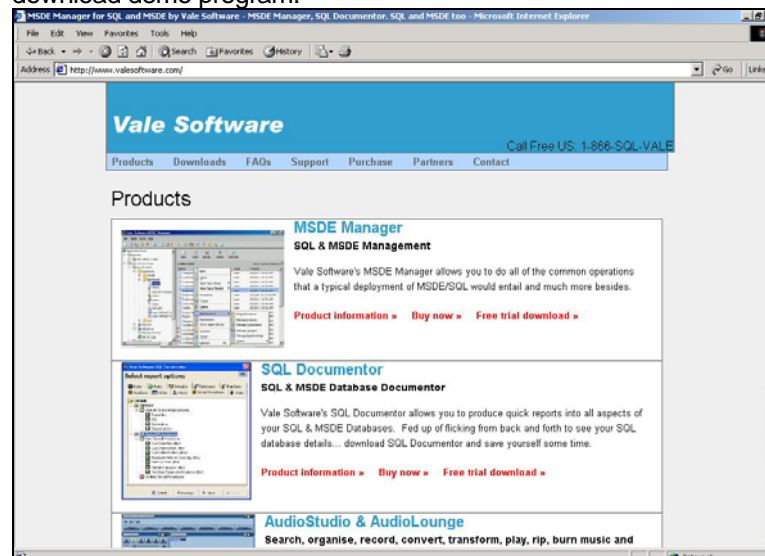
- Add/Edit/Delete databases / tables / views / roles / rules / stored procedure
- Complete Table designer to add/edit/delete/cut/copy/paste columns
- Set primary keys / triggers / indexes / constraints
- Change server properties (e.g. authentication mode etc.)
- Change column properties.
- View/Edit/Export data in the data management section.
- Execute DTS packages.
- Create and Schedule jobs.
- Backup & Restore Databases.
- Attach, Detach and Shrink databases.
- Complete Full TSQL module with quick select function list/color coded TSQL.
- Relationships management screen for foreign keys etc.
- Transfer database wizard to transfer form server to server.
- Much more....

How to download MSDE Manager (Vale Software)

You can download demo program in Vale Software homepage. Home page address is like below.

<http://www.valesoftware.com/products-msde-manager.php>

And by clicking **Free trial download** item in MSDE Manager item, it is possible to download demo program.

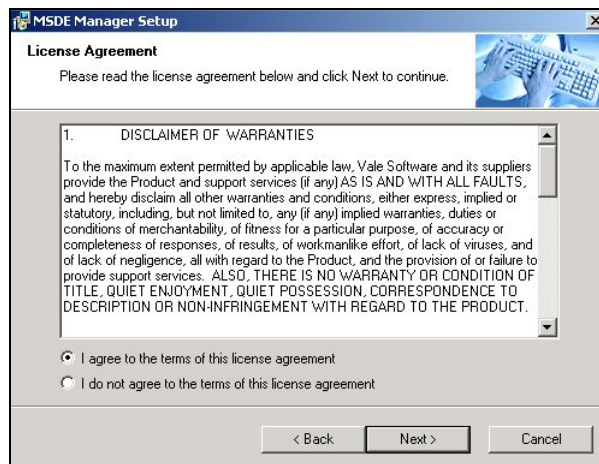


How to install MSDE Manager (Vale Software)

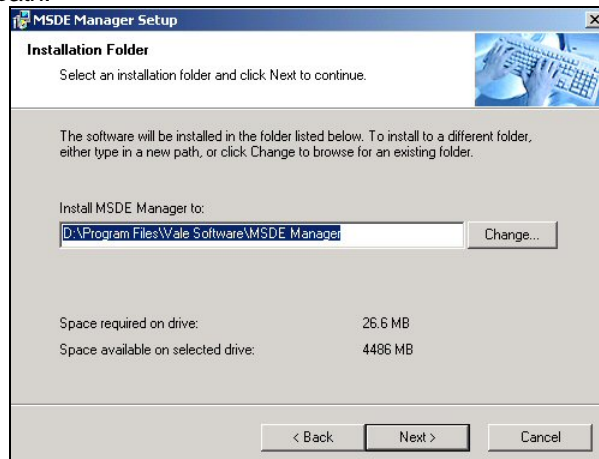
- 1) Please double click msdemanager.exe.



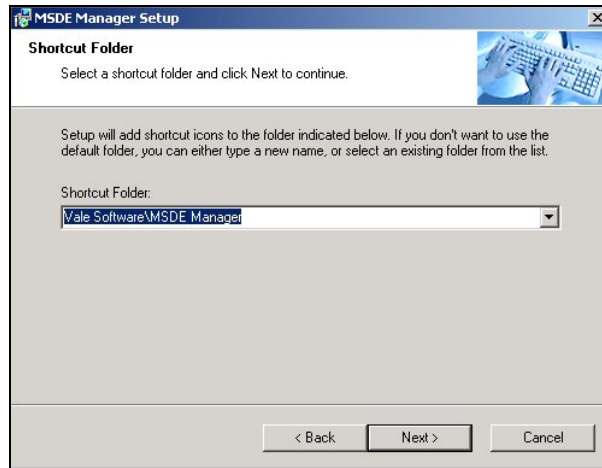
- 2) Please agree to the license and click Next button.



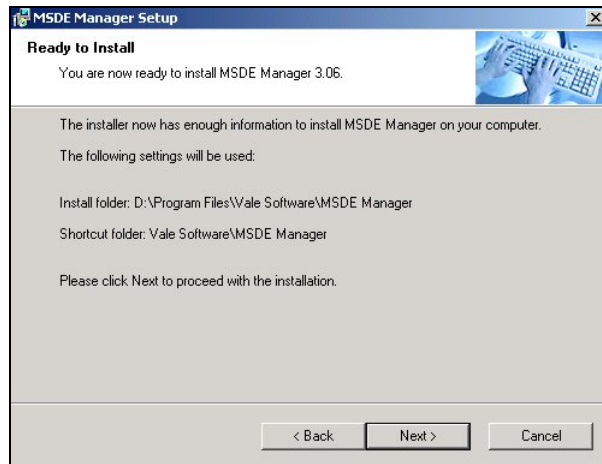
- 3) Please select setup path and click Next button. We recommend you to install to the default set up path.



- 4) Please set shortcut folder and click Next button. We recommend the default shortcut folder.



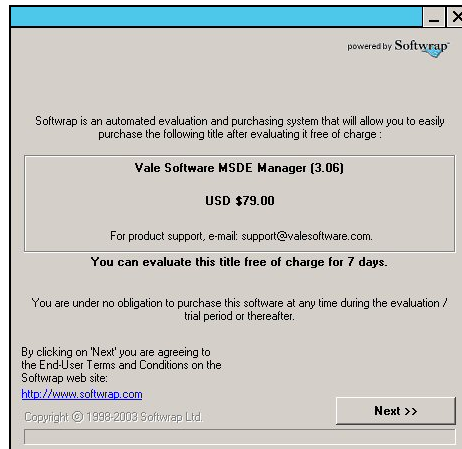
- 5) By clicking Next button, Installation process begins.



- 6) After all setup process is completed, please click finish button to finish setup process.



7) After setup, license information like below is displayed. Please click Next button.



8) Please click Try Now button to start program.

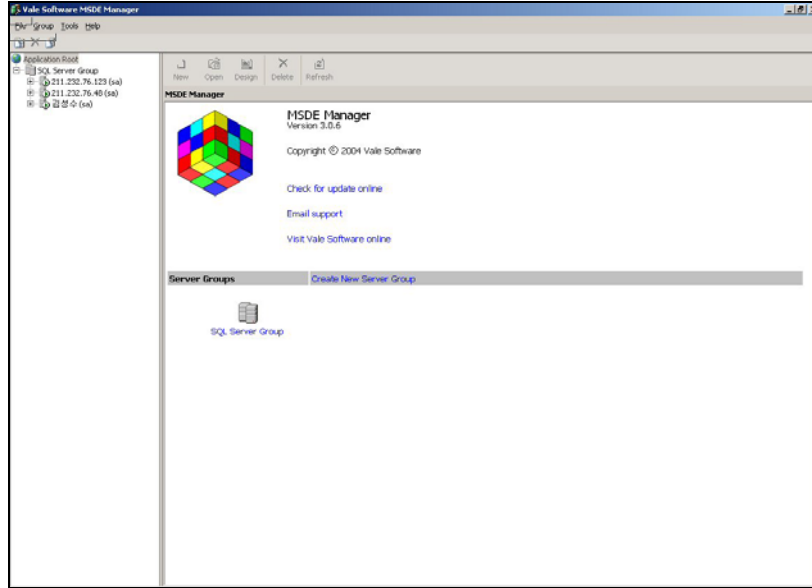


MSDE Manager (Vale Software) License Information.

This software can be downloaded only by Internet, and if you want to purchase full license you need to pay \$79(USD). But for 7 days after fist installing program, it is possible to use all functions with no restriction. You can purchase program after using program free.

SQL Server Registration

Program main window is composed like below. Connection available database servers are displayed in the left side of screen.



Please register like below when there is no other connection available database server.

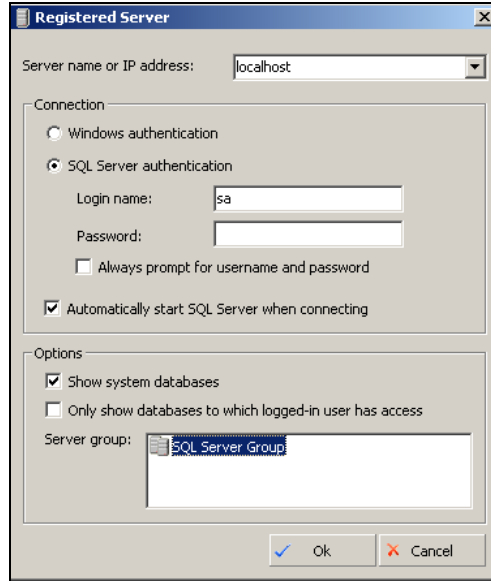
- 1) Please click right mouse button in SQL Server Group in the left side of screen and select New SQL Server Registration.



- 2) Input installed computer IP in Server name or IP address, or Input localhost in MSDE Manager-installed-computer if MSDE is installed.
Input sa in Login name. Input blank or password in Password and password should be the one which was designated in installing MSDE.

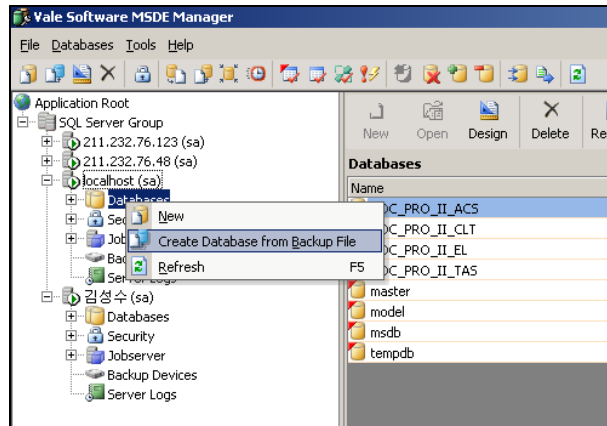
Please select Server group in SQL Server Group.

After finishing all above process, click OK button.

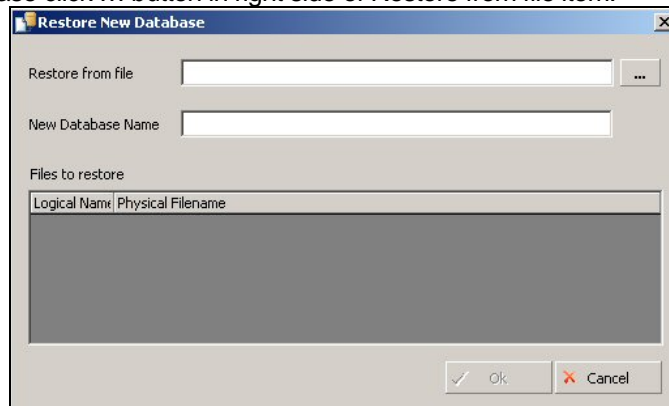


Create Database from Backup File

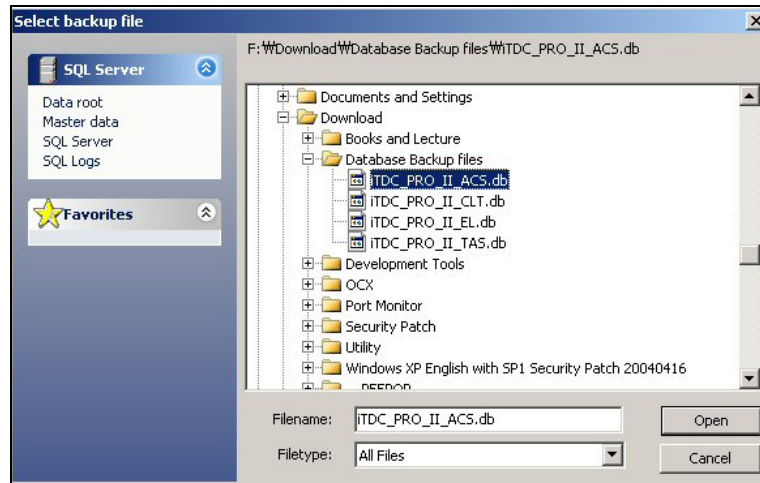
- 1) After selecting registered server and click right mouse button and select Create Database from Backup File.



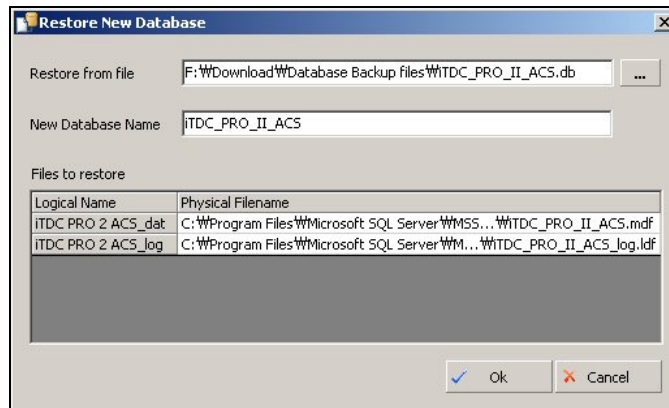
- 2) Please click ... button in right side of Restore from file item.



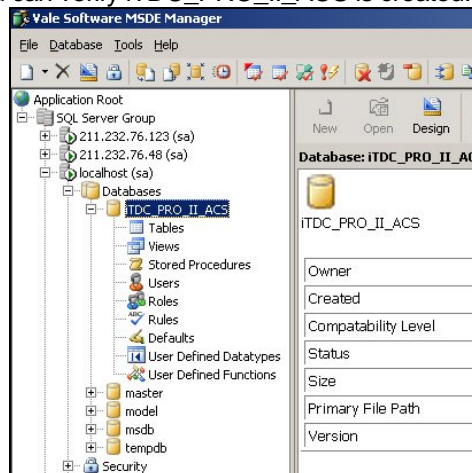
- 3) Alter below Filetype item to All Files. Please select the path database file is saved which is in Program setup CD our company has provided.
Please select iTDC_PRO_II_ACS.db in database files and click Open button.



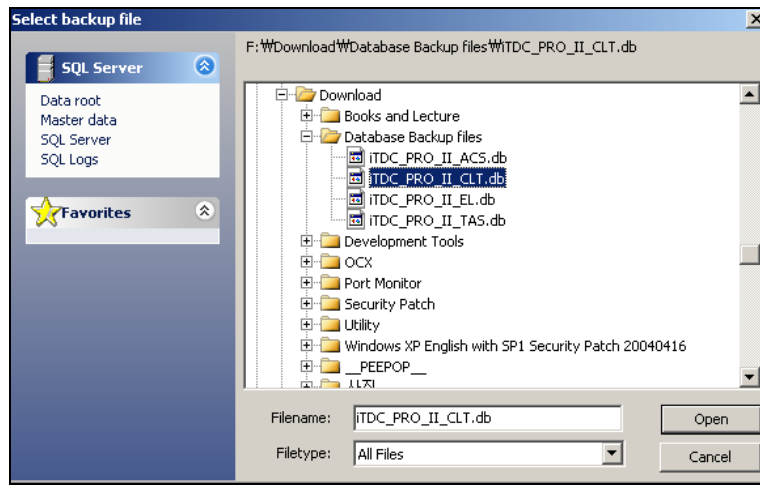
- 4) Selected database file information is displayed like below. Please click OK button and make database.



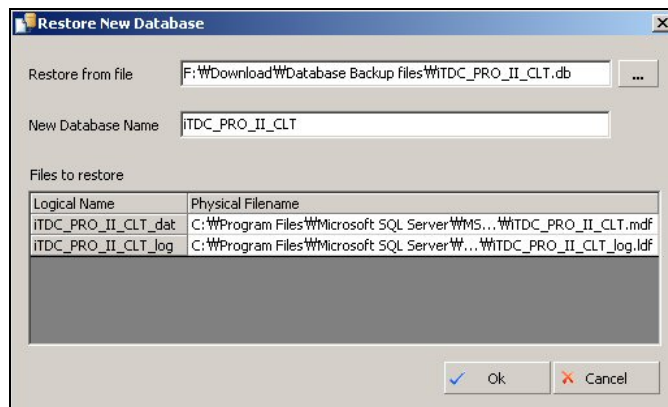
- 5) It shows database setup creation.
- 6) You can verify iTDC_PRO_II_ACS is created.



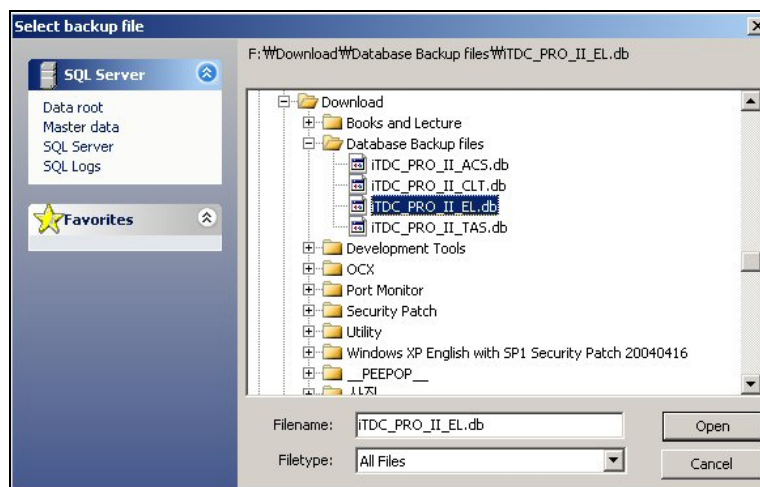
- 7) Same as above procedure, please create other databases. Please select iTDC_PRO_II_CLT.db. Please click Open button.
- 8)



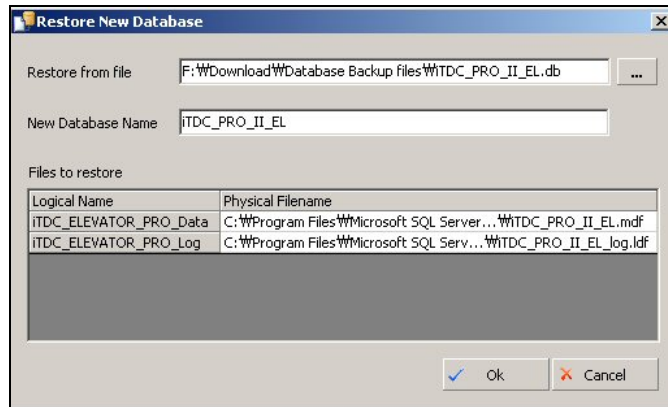
- 9) Please click Ok button and make a new database.



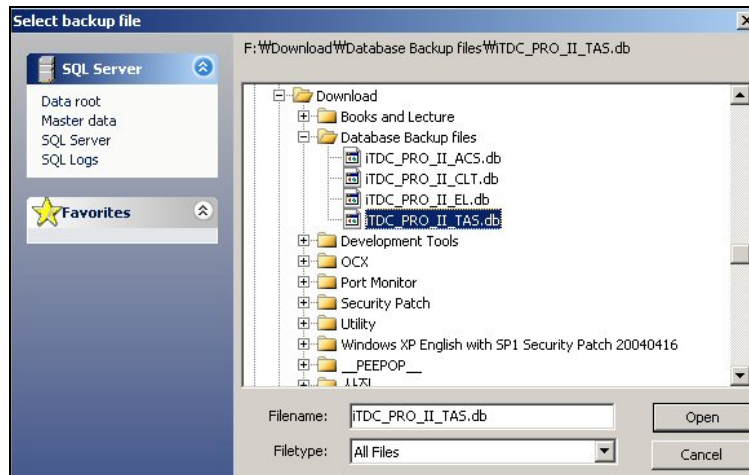
- 10) Please select iTDC_PRO_II_EL.db. Please click Open button.



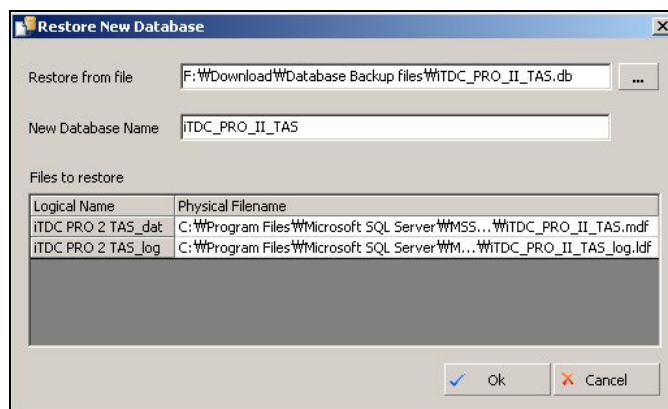
11) Please click Ok button and make a new database.



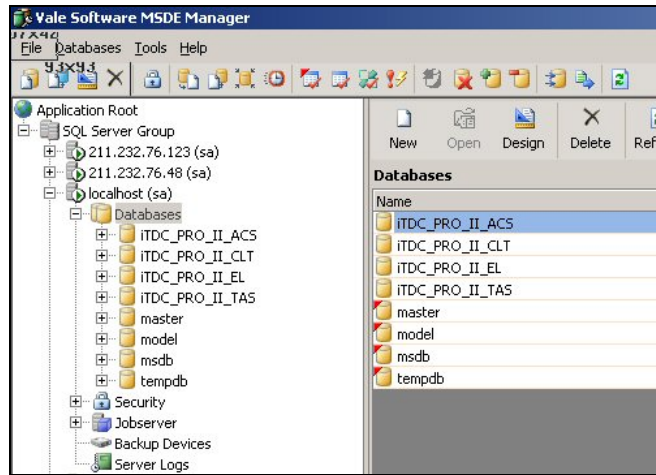
12) Please select iTDC_PRO_II_TAS.db. Click Open button.



13) Please click Ok button and make a new database.



14) If all database creation are completed, you can verify 4 database in the left side of screen.



Chapter
2

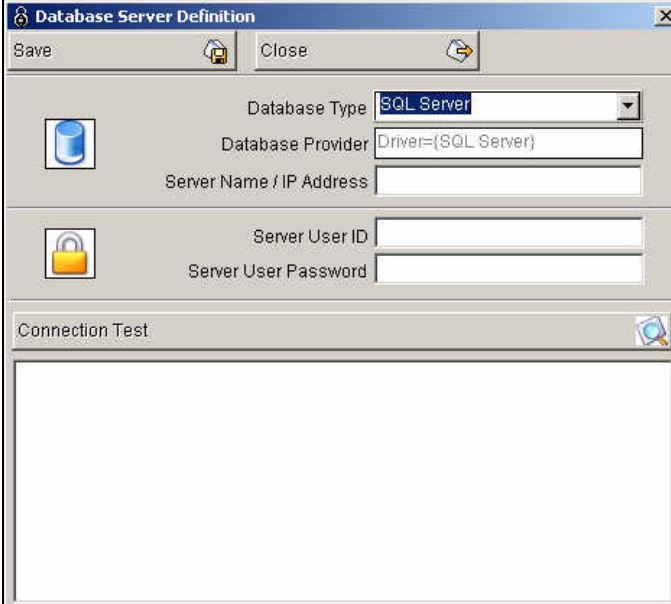
STARWATCH iTDC PRO II Database Definition

This The setting for database connection must be set from STARWATCH iTDC PRO II first.

To complete this step, SQL Server must be installed and Database installation must be completed.

STARWATCH iTDC PRO II Server

- 1) Database server definition is showed when STARWATCH iTDC PRO II is run at first time.
If database is connected, Log In screen will be shown.



The screenshot shows a dialog box titled "Database Server Definition". It has a "Save" button with a floppy disk icon and a "Close" button with a window icon. The dialog contains the following fields:

- Database Type:** A dropdown menu with "SQL Server" selected.
- Database Provider:** A text box containing "Driver={SQL Server}" with a blue cylinder icon to its left.
- Server Name / IP Address:** An empty text box.
- Server User ID:** An empty text box with a yellow padlock icon to its left.
- Server User Password:** An empty text box.

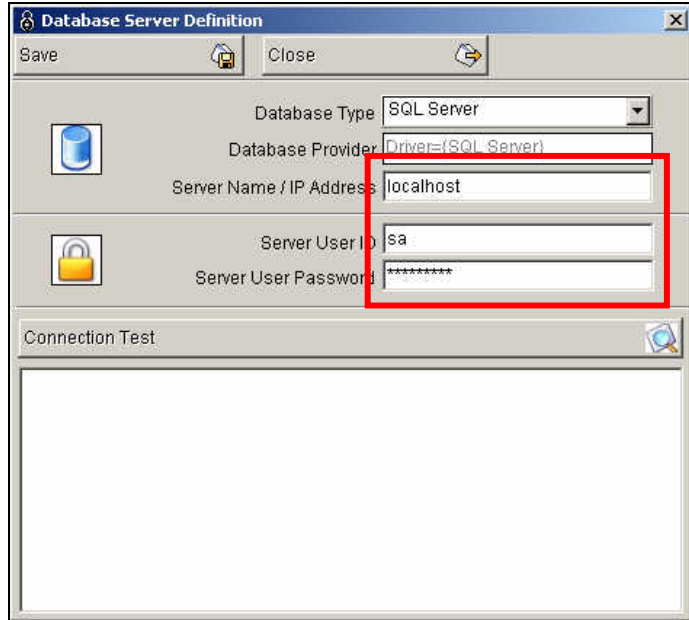
At the bottom, there is a "Connection Test" section with a magnifying glass icon and a large empty rectangular area below it.

- 2) Enter server name or IP address on **Server Name/IP Address** .

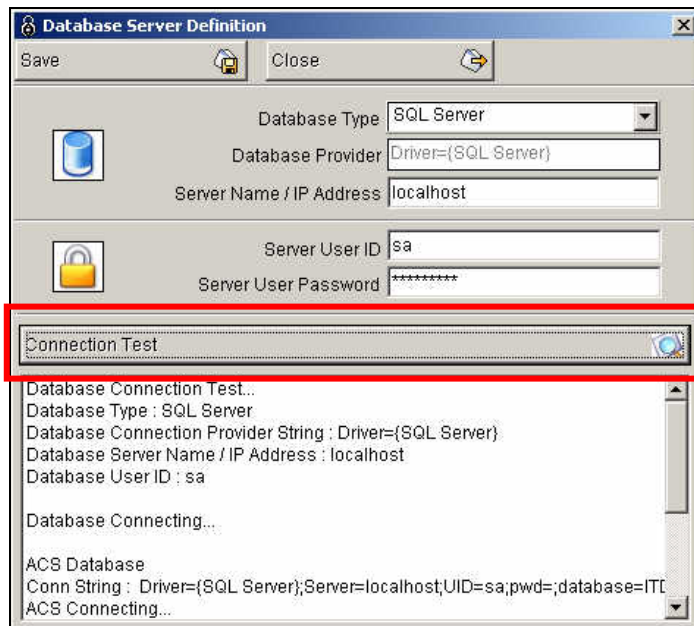
If STARWATCH iTDC PRO II and database is installed at same location, 'localhost' can be entered instead of IP address

Enter User ID on **Server User I**. Enter 'sa' if you followed user manual.

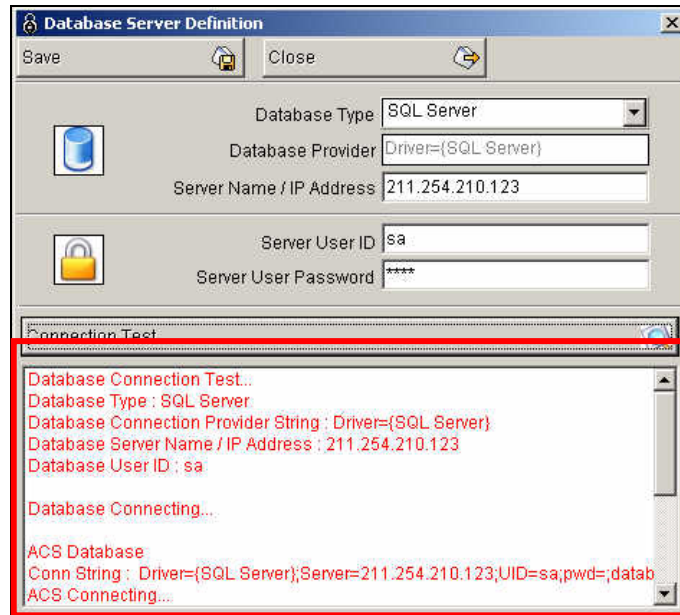
Enter password on **Server User Password**. Enter 'starwatch' if you followed user manual.



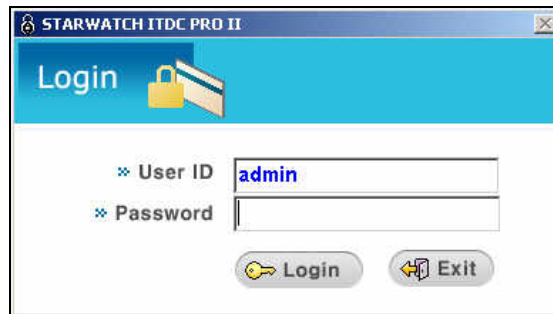
- 3) Click Connection Test for test.
Following screen will be shown if connection test is completed.



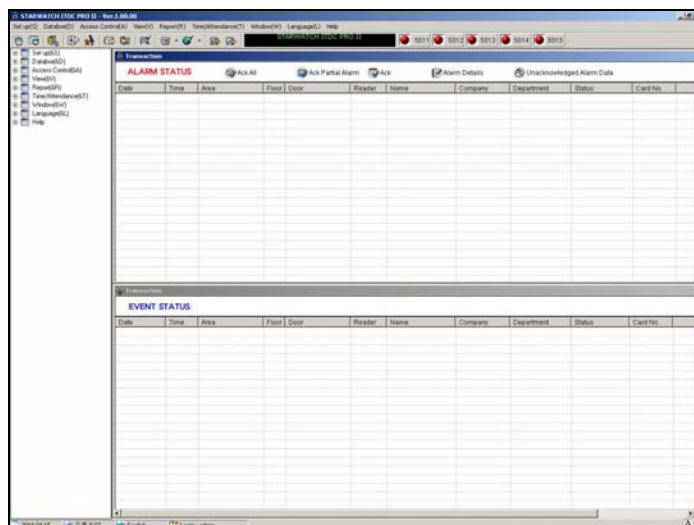
Following screen will be shown if connection test is failed. .



- 4) Save setting value and restart to see normal log on screen.
Default ID 'admin' with no password. .



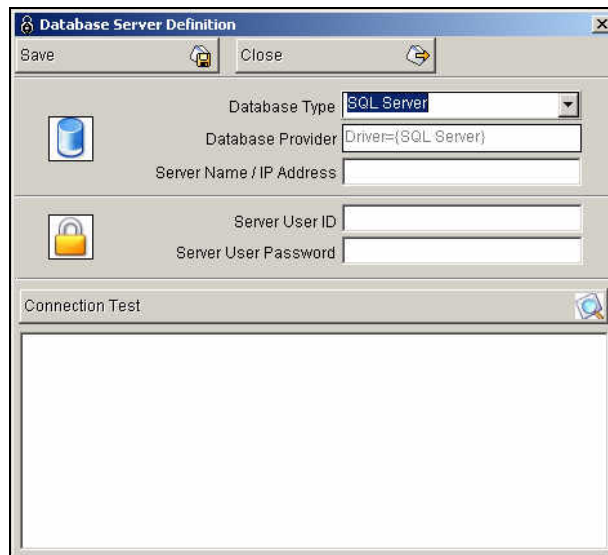
- 5) Following shows main screen.



STARWATCH ITDC PRO II Client

It is same with STARWATCH ITDC PRO II Server setting.

- 1) Database server definition is showed when STARWATCH ITDC PRO II Client is run at first time.
If database is connected, Log In screen will be shown.

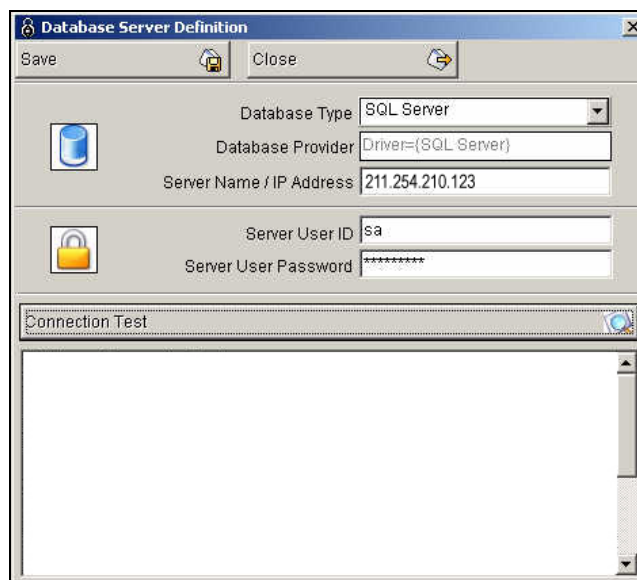


- 2) Enter server name or IP address on **Server Name/IP Address** .

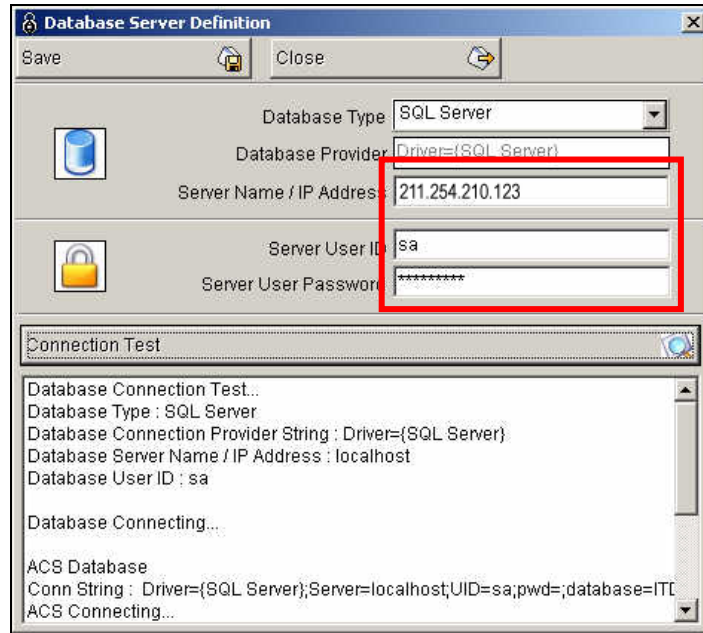
If STARWATCH ITDC PRO II and database is installed at same location, **'localhost'** can be entered instead of IP address

Enter User ID on **Server User I**. Enter **'sa'** if you followed user manual.

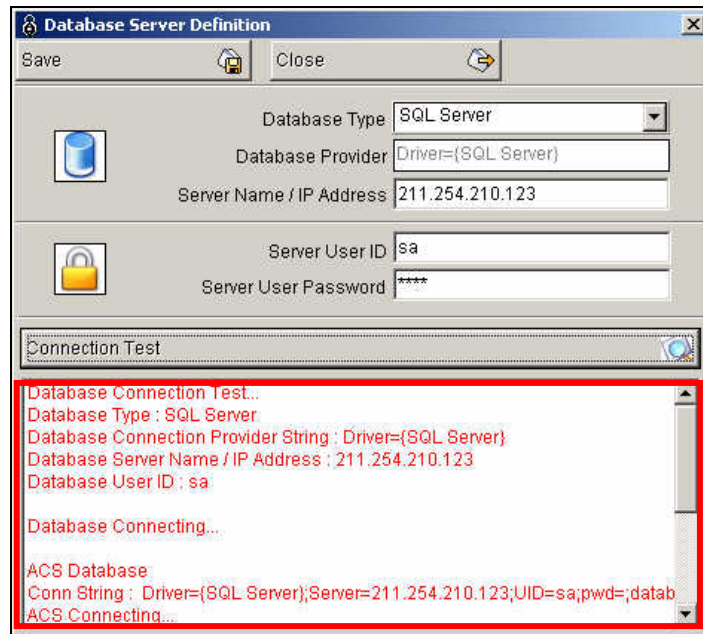
Enter password on **Server User Password**. Enter **'starwatch'** if you followed user manual.



- 3) Click Connection Test to test.
Following screen will be shown when test is completed.



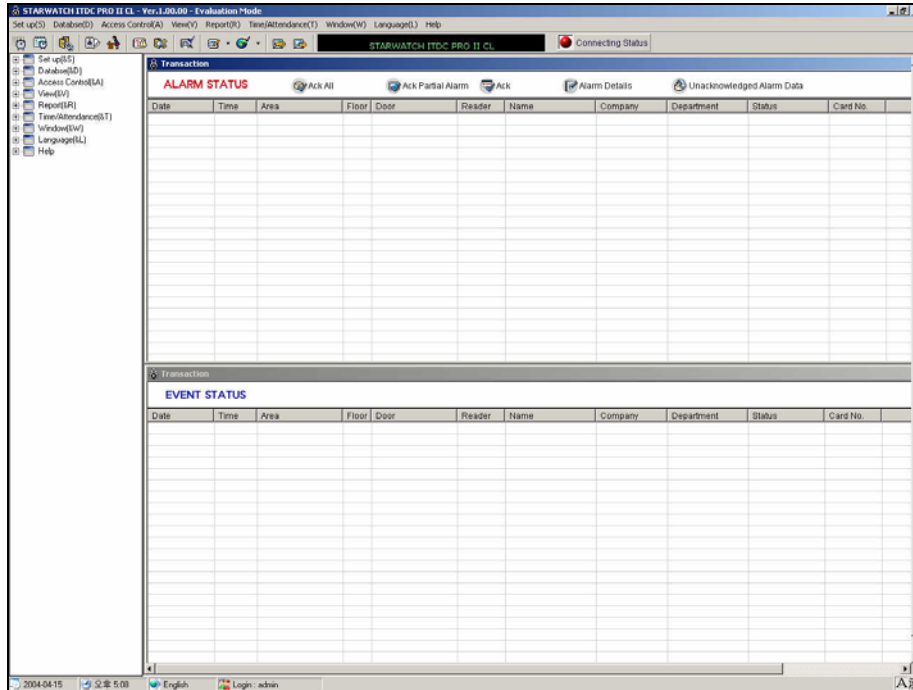
If connection test is failed, following screen will be shown.



- 6) Save setting value and restart to see normal log on screen.
Default ID 'admin' with no password. .

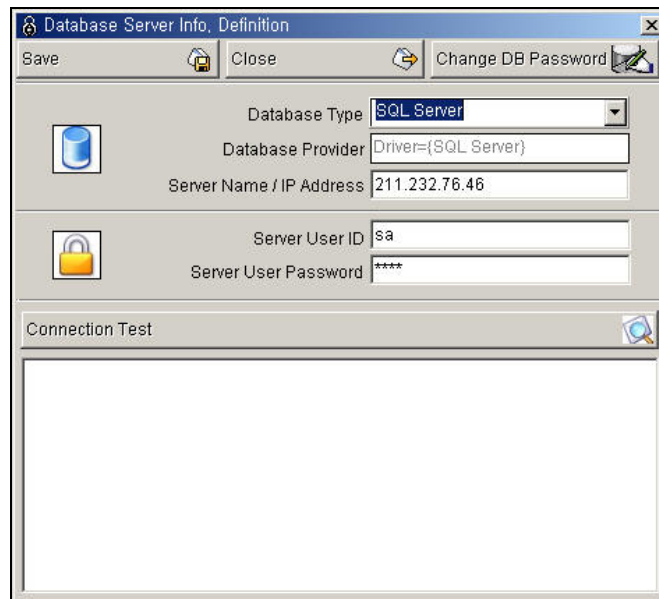


- 4) Following is main screen



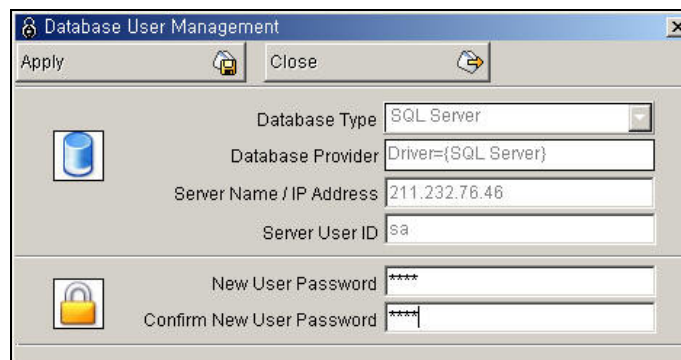
Database Password Change

- 1) You may change User ID of SQL Server or MSDE that was set initially as 'sa'.
- 2) Run data base server setting menu.
Location : Data base -> Data base server management
- 3) Click 'DB User ID Change '



- 4) Put the new user ID to use.

In order to make sure put the same User ID one more time as below.



- 5) Click "apply".
- 6) The new user ID and password will be applied in SQL Server or MSDE and in the local PC automatically.

User ID and password setting of STARWATCH ITDC PRO II server or clients in OTHER PC, connected to the data base via network, must be changed manually for their connection to the data base.