

Setting up the Nexus module for GPRS

Introduction

The Nexus module has many features and one of them being able to use it for remote upload/download programming using the SmartLeague software.


This technical note will show you how to setup the Nexus module for GPRS as well as showing you how to connect using GPRS.

Things to know before you begin

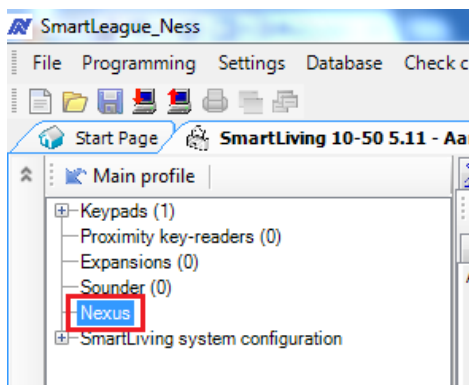
- Ensure you have a SIM card without a PIN number enabled.
- Ensure you know the APN settings for the mobile network the sim card belongs to
- Ensure your mobile network provider supports GPRS and it's enabled on your SIM card.
- Ensure you have a serial or SmartLan connected to your panel as it is required to setup the GPRS connection on the Nexus module.
- Ensure you have the Sim card inserted in before powering up the Nexus Module.

Configuring the Nexus module for GPRS

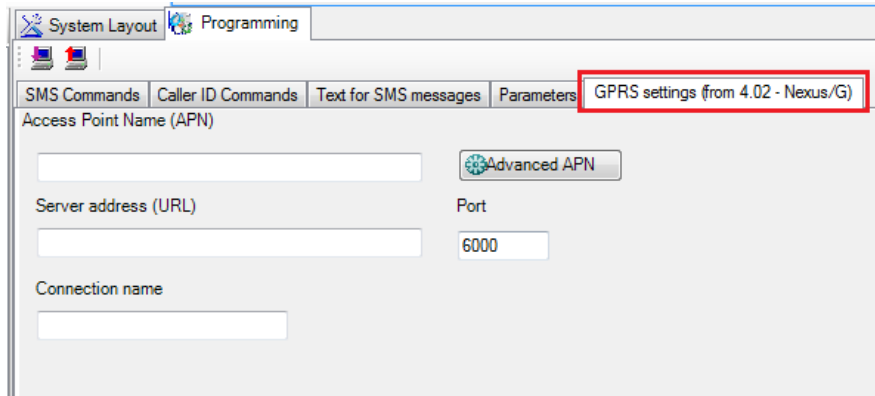
1. Insert the Sim card into the Nexus module.
2. Once the sim card is inserted, ensure you have the GSM antenna connected to the Nexus module.
3. Connect the Nexus module to the data bus and power it up.

 **Maximum of 1 Nexus module can be connected to your data base and SmartLiving panel, however this can be plugged in anywhere on the data bus.**

4. Select **Nexus** from the left tree.



5. Select the **GPRS Settings** tab from the right panel.



6. Fill in the connection settings.

Access Point Name (APN)

The APN settings may be different based on your mobile network and mobile plan. It's recommended to contact your mobile network provider to check what settings to use.

If your mobile network requires as username and password, then you can click on **Advance APN** to provide it.

Examples of APN settings:

Mobile Network	APN
Optus	INTERNET
Telstra	TELSTRA.INTERNET

Server address (URL)

This is the IP or DynDNS hostname to connect to, such as your routers external IP address or a DynDNS account.

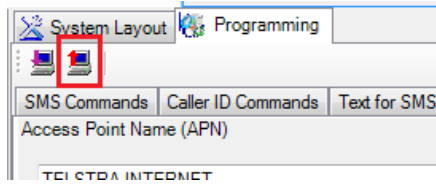
Port

This is the communication port the Nexus module connects with. This port needs to be port forward in the router.

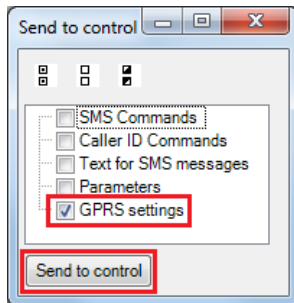
Connection Name

This is the descriptive string of the connection. This is used to enable the GPRS using a SMS message.

- After entering your settings you then need to send the settings to the panel.
Click on the Send to panel button.



- Make sure the **GPRS settings** tick box is ticked and then click on **Send to Control**.



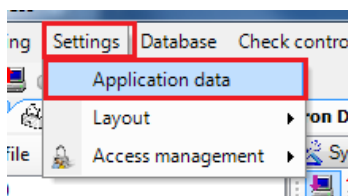
- Once the settings have been sent to the panel, the system will then reboot and the settings will be applied and ready to use.
- You now need to configure your routers port forwarding to allow incoming connections to the SmartLeague software.



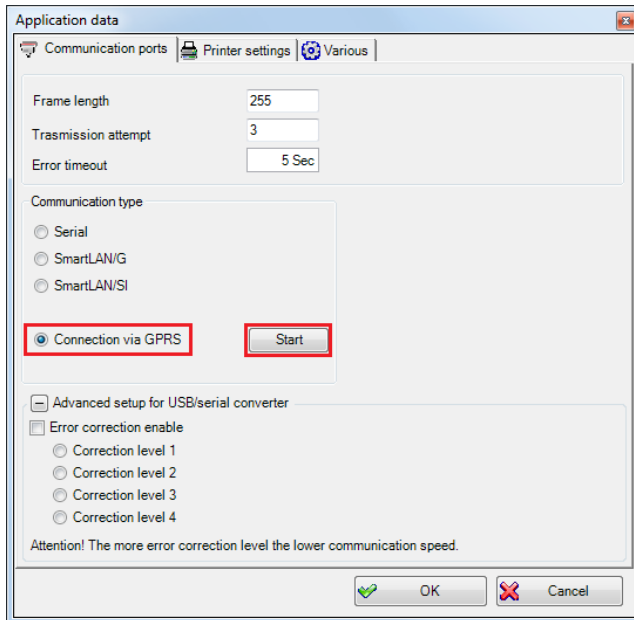
Ness will not support port forwarding and you will need to contact the network administrator or ISP for help on how to port forward in the customer's router.

Below you will find the required information / settings that needs to be done in the customers router.

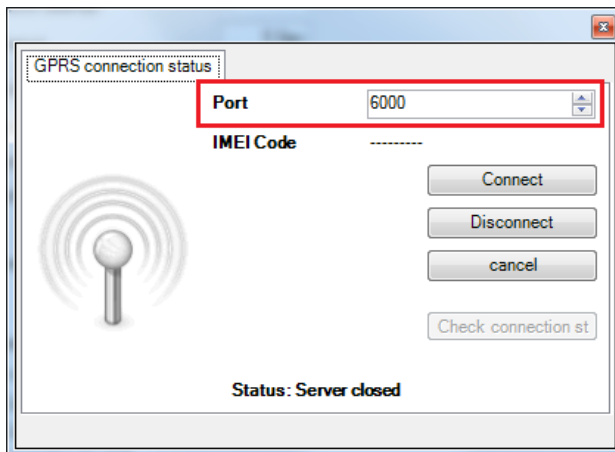
- Find the IP address of the computer that is running the SmartLeague software. This should be your local IP address and is recommend being a static IP address.
- Open your routers port forwarding section.
- You need to port forward the port found in the 'Application data' section.
Click on **Settings > Application data** from the menu.



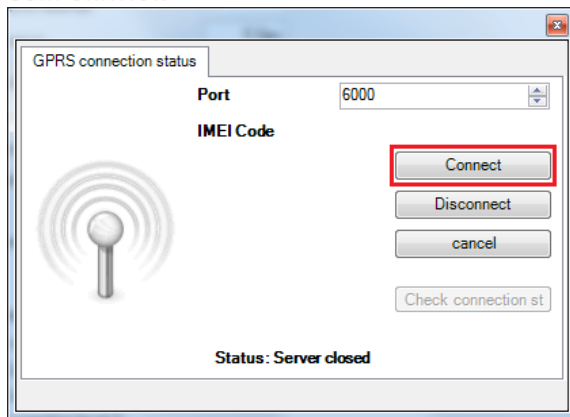
12. Select **Connection via GPRS** then click on **Start**.



13. The port found in this window is the port that needs to be open in your routers port forwarding. This port can be changed, but you will need to remember this port for future connections.



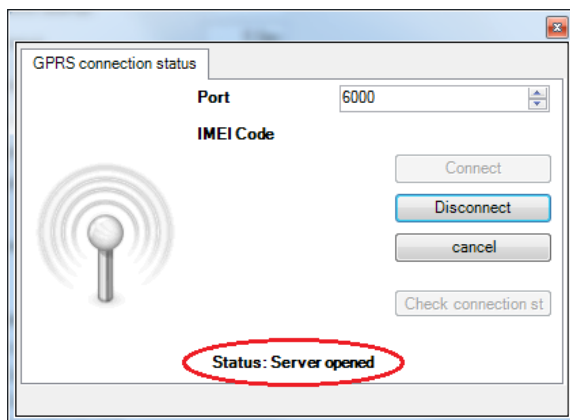
14. Click on the **Connect** button so it listens for incoming connections from the Nexus module.



15. The status should then say **Server opened**.
Now the SmartLeague is ready for connecting.



Keep this window open into the connection has been made by following the next steps.

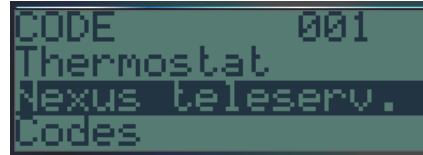


16. There are 2 ways you can start the GPRS connection.
 1. Using the keypad.
 2. Sending a SMS message to the Nexus module.

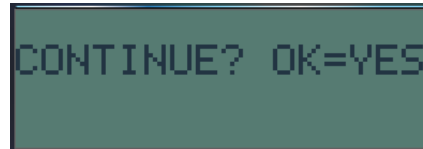
Making the connection using the keypad

1. On a programmed keypad press the **OK** button then enter in a valid user code, then press **OK** again to enter the user menu.

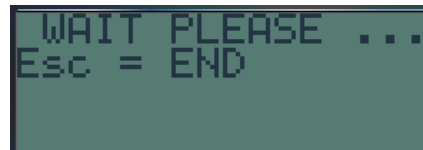
2. Press the down arrow to scroll down the list into you get to **Nexus teleserv.** Then press **OK**.



3. Press **OK** to start the connection process.



4. The system will then begin connecting to the SmartLeague software.

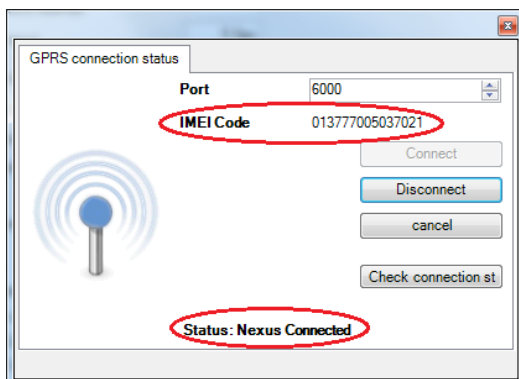


5. Once the Nexus makes connection, it will display the IMEI code of the Nexus module plus it will say **Nexus Connected** down the bottom of the window.

Now you are connected, you can press the Red Cross up the top right of the window to close this dialog window.



Do no press the Disconnect button, otherwise it will disconnect and you won't have connection to your panel.



It will also display the GPRS icon on the keypad so you know that it's connected by GPRS.



Making the connection by a SMS Message

1. Using any mobile phone, open the SMS message screen that you use to send SMS messages.
2. You need to send a SMS message to the mobile number of the Nexus Module, so the number you are going to send the SMS to is the mobile number of the Nexus module.
2. The message is made of values you use on the system.

The SMS Message:

9999 CONNECT **SMARTLIVING** **123.456.789.123:6000**

9999 - Enter in the installer code. (Default it is set to 9999)

Next, put in a space.

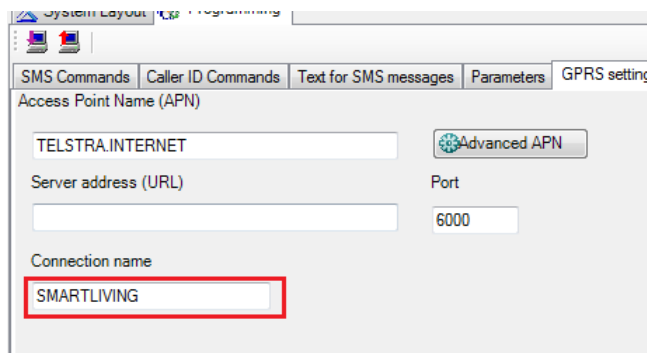
CONNECT - Now type in **CONNECT** all in capital letters.

Put in a space.

SMARTLIVING - Enter the **connection name** as per the Nexus module settings. As shown below:



The connection name may be different based on your setup. This can be anything and it acts like a password when enabling the GPRS settings by a SMS message.

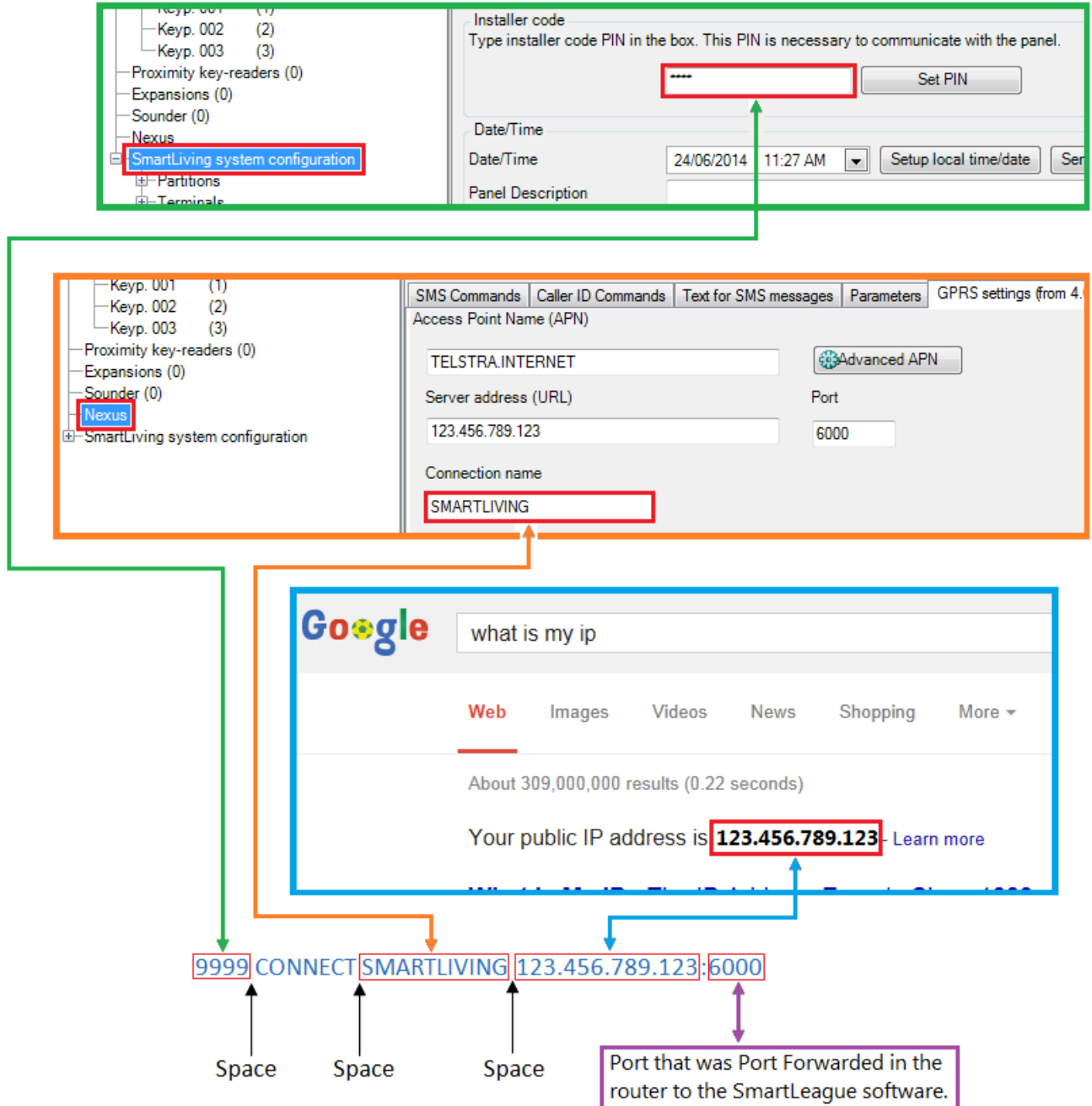


Put in a space.

123.456.789.123 - Enter in the Server Address IP or DynDNS hostname of the SmartLeague computer. This would be your DynDNS hostname or you can enter in your routers external IP address.

:6000 - Enter in : followed by the port that is being used in your routers Port forwarding rules.

Locations where to find the required information for the SMS Messages:

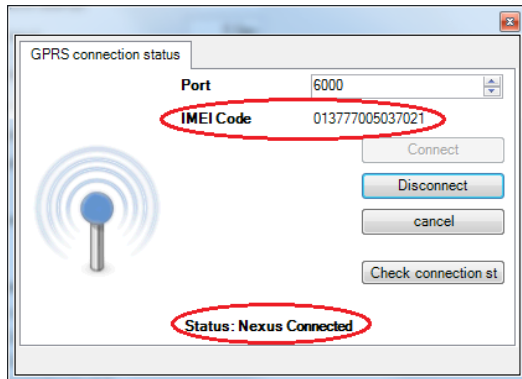


3. Press the send button to send the message to the Nexus module.

4. Once the Nexus module receives the SMS message it will beep.

- 3 quick beeps means that it has received the SMS and the installer code is correct and it will make the connection.
- 5 Long beeps means the installer code is wrong or an error has occurred.

5. Once the Nexus makes connection, it will display the IMEI code of the Nexus module plus it will say **Nexus Connected** down the bottom of the window.



Now you are connected, you can press the red cross up the top right of the window or press the cancel button to close this dialog window.



Do not press the Disconnect button, otherwise it will disconnect and you won't have connection to your panel.

The keypad will display the GPRS icon like shown below:



If no commands are sent within 3 consecutive minutes the GRPS connection will end automatically.

Additional Information:

Customer Service

Phone: 1300 551 991 (M-F 8:30am – 5:00pm)

Email: customerservice@ness.com.au

YouTube: www.youtube.com/nesscorporation