

Setting Up Lift Control For The First Time

Introduction

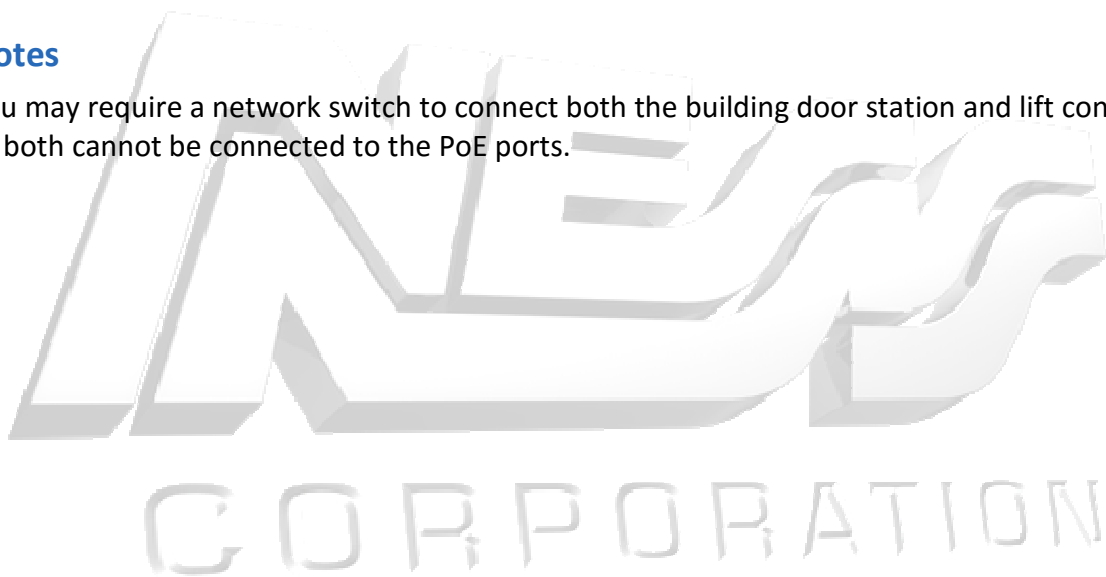
This tech guide will step you through the steps to set up the HikVision Lift Control to work with the Apartment IP Intercom

Before you begin

Ensure you have the iVMS software version 2.4.2.51 Build 20160818 installed on your computer. This can be downloaded from the Ness Website.

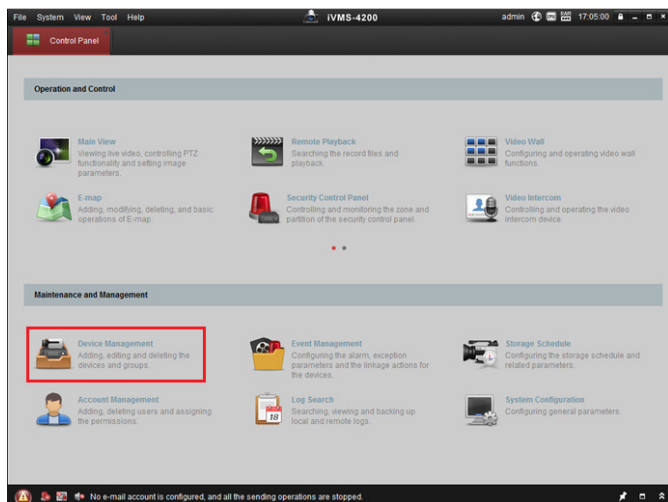
Notes

You may require a network switch to connect both the building door station and lift control as both cannot be connected to the PoE ports.

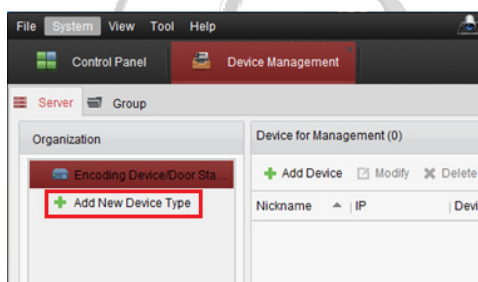


1.1 Setting up the iVMS

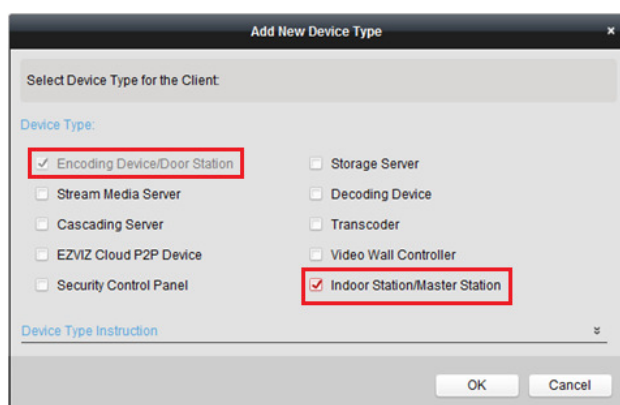
1. Click on 'Device Management'.



2. Click on 'Add new Device Type' from the left side menu.



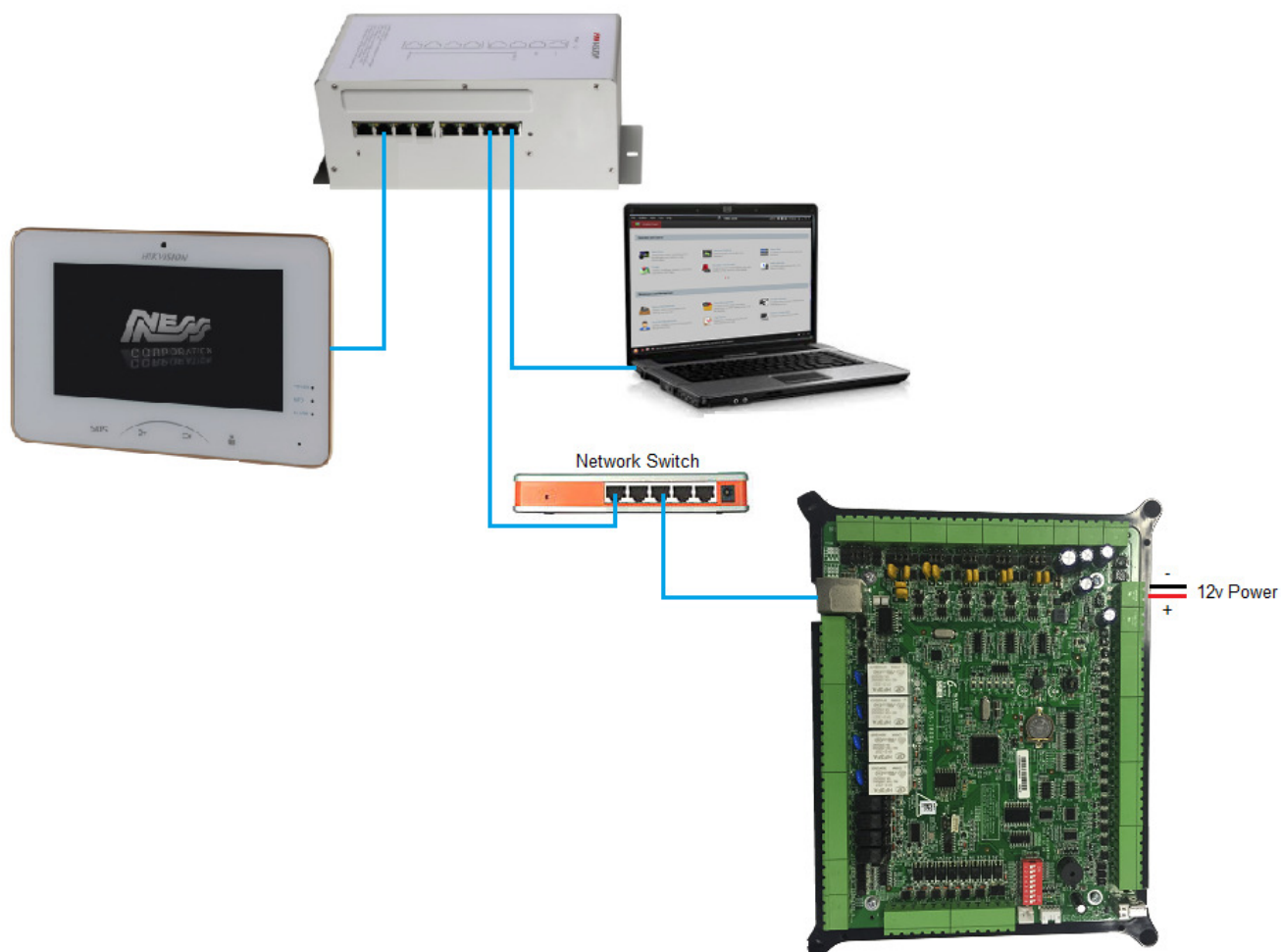
3. Ensure that 'Encoding Device / Door Station' and 'Indoor Station / Master Station' is ticked and click on OK.



1.2 Setting up Lift Controller

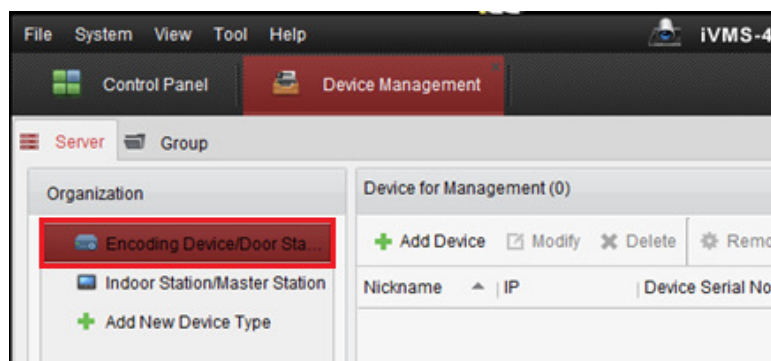
1. Connect a LAN cable into the lift controller and the network switch (LAN 1 port) and connect it to your IP Intercom network. (You may need to use a network switch in LAN 2 if your Door Station is plugged into this port)

Note, Do not connect the Lift controller to a PoE port otherwise you will void your warranty.

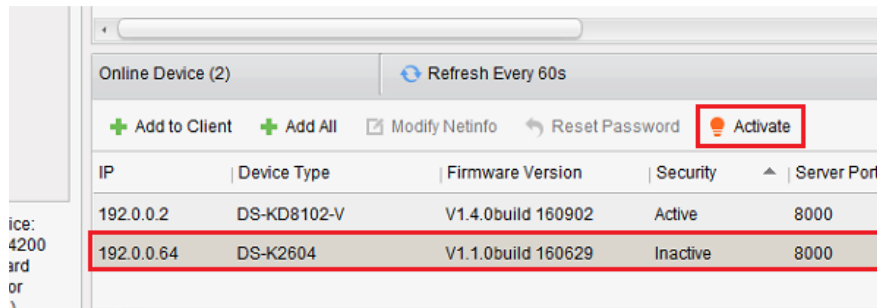


2. Power up the Lift Control using a separate 12v power supply.

3. Select 'Encoding / Device / Door Station' from the left menu in iVMS.

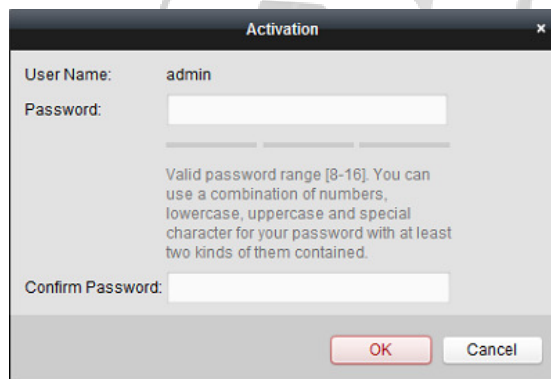


4. Select your Lift Controller from the bottom section and then click 'Activate'.

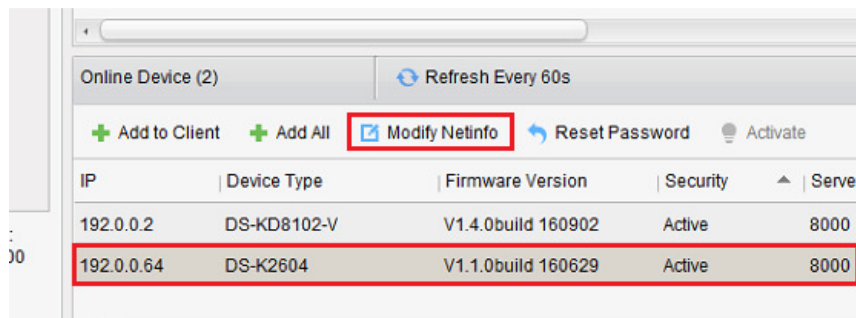


5. When prompted, enter in a password for this door station. This can be anything you want. You can use the same password as you use to login to iVMS which will make it easy to remember.

If you ever want to reconfigure this door station at a later time, you will need to know this password.



6. Click on the lift control from the bottom section and click on 'Modify NetInfo'



7. Set the IP address to be **192.0.0.10**

Once the IP address is set, enter in the password at the bottom which you used to activate it. Then click on OK.

Modify Network Parameter

Device Information:

MAC Address: 01-03-cc-dd-ee-ff

Software Version: V1.1.0build 160629

Device Serial No.: DS-K260420160629V010100EN123123456

Network Information:

DHCP

Port: 8000

IPv4(Don't Save)

IP Address: 192.0.0.10

Subnet Mask: 255.255.255.0

Gateway: 0.0.0.0

IPv6(Don't Save)

Password:

8. Select the lift controller from the bottom section and then click on 'Add to Client'.

Online Device (2) Refresh Every 60s

IP	Device Type	Firmware Version	Security
192.0.0.2	DS-KD8102-V	V1.4.0build 160902	Active
192.0.0.10	DS-K2604	V1.1.0build 160629	Active

9. Now you need to set some settings for this lift control.

Nickname – Give the controller a name. In my example, it's going to be called 'Lift Control'.

Address – Leave the IP address as it is

Port – Leave this as port 8000

Username – set this as admin

Password – Enter the password you used to activate the door station

Leave the Export to group ticked, once the above is set click on Add.

Add

Adding Mode:

IP/Domain IP Segment IP Server HIDDNS Batch Import

Add Offline Device

Nickname: Lift Control

Address: 192.0.0.10

Port: 8000

User Name: admin

Password:

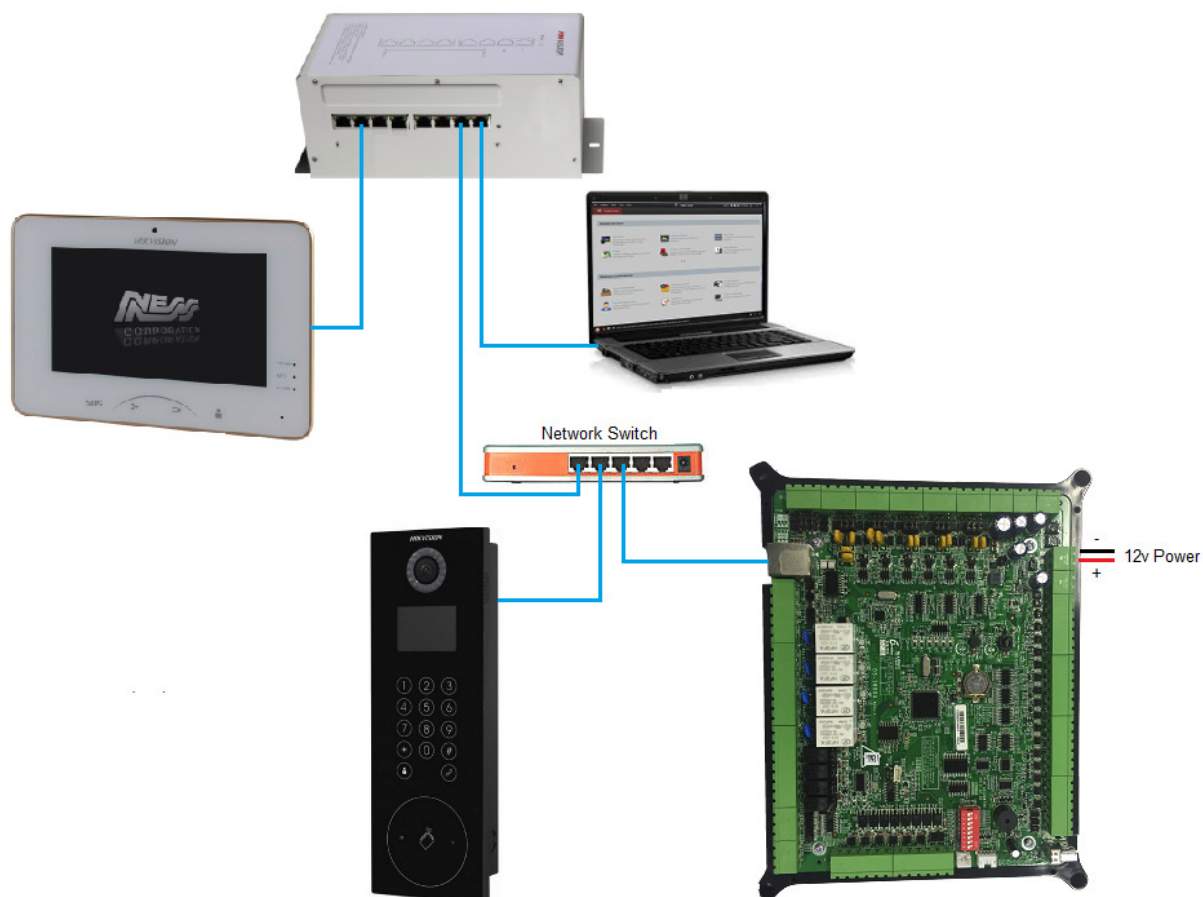
Export to Group

Set the device name as the group name and add all the channels connected to the device to the group.

1.3 Setting up Building Door Station

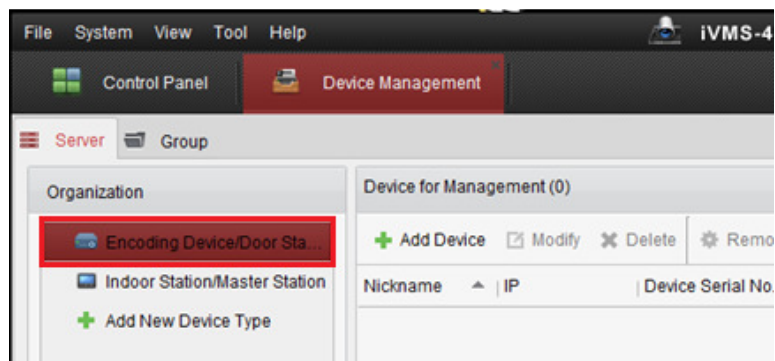
1. Connect a LAN cable into the Apartment door station (LAN 1 port) and connect it to your network.

Note, Do not connect the Apartment door station to a PoE port otherwise you will void your warranty.

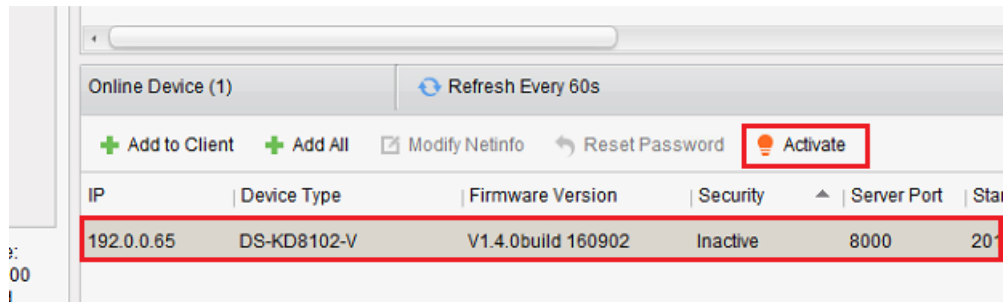


2. Power up the Apartment door station.

3. Select 'Encoding / Device / Door Station' from the left menu in iVMS.

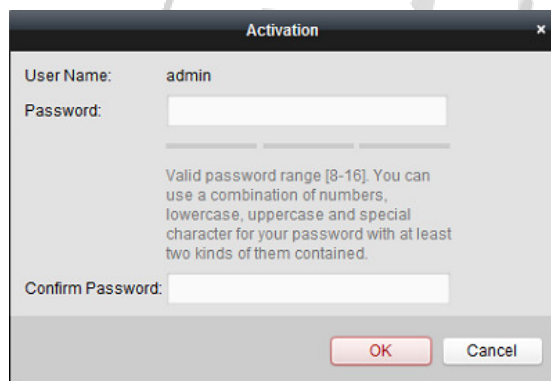


4. Select your Apartment Door station from the bottom section and then click 'Activate'.

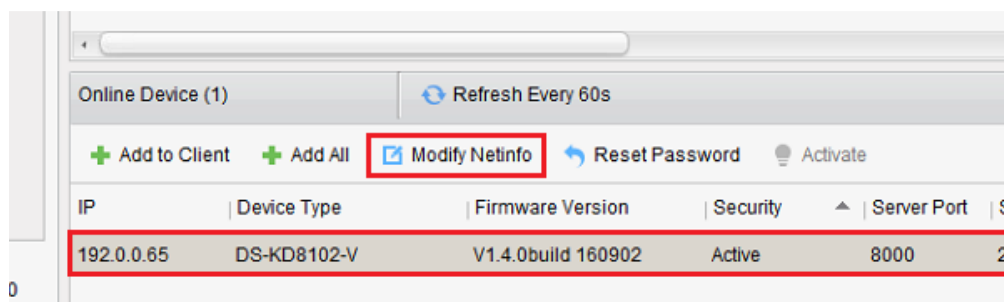


5. When prompted, enter in a password for this door station. This can be anything you want. You can use the same password as you use to login to iVMS which will make it easy to remember.

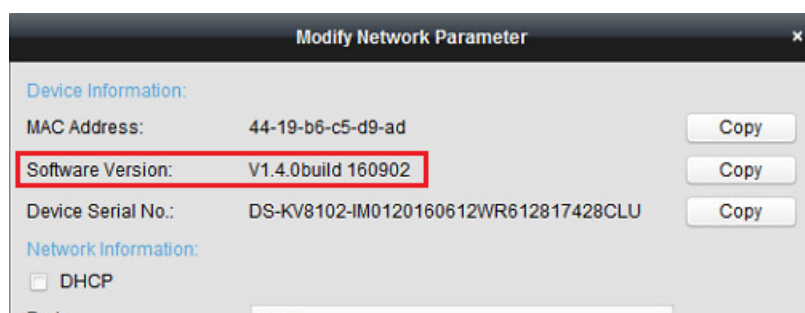
If you ever want to reconfigure this door station at a later time, you will need to know this password.



6. Click on the door station from the bottom section and click on 'Modify NetInfo'



7. Make sure the software version is v1.4.0 or above before continuing. If it's not then you will need to update the firmware before setting up the system. Refer to the firmware update tech note for steps on how to update the firmware.



8. Up to 8 Apartment door stations can be added to the system.

Enter in the IP address for the apartment door station.

Use the following IP addresses as it will make it easier for later on:

Apartment Door Station 1 = 192.0.0.2

Apartment Door Station 2 = 192.0.0.3

Apartment Door Station 3 = 192.0.0.4

Apartment Door Station 4 = 192.0.0.5

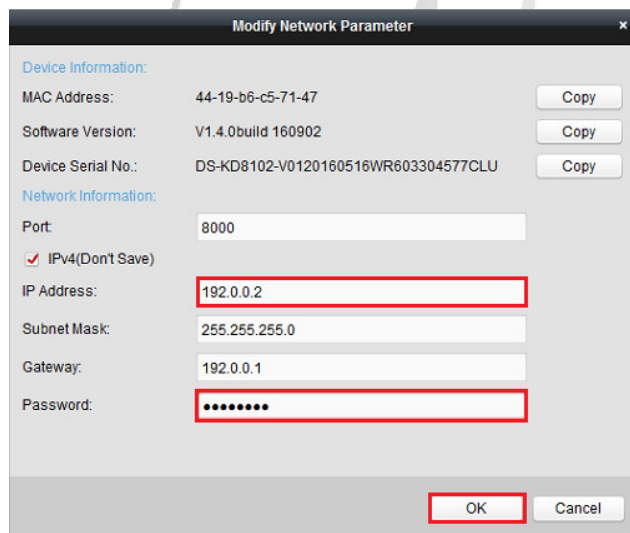
Apartment Door Station 5 = 192.0.0.6

Apartment Door Station 6 = 192.0.0.7

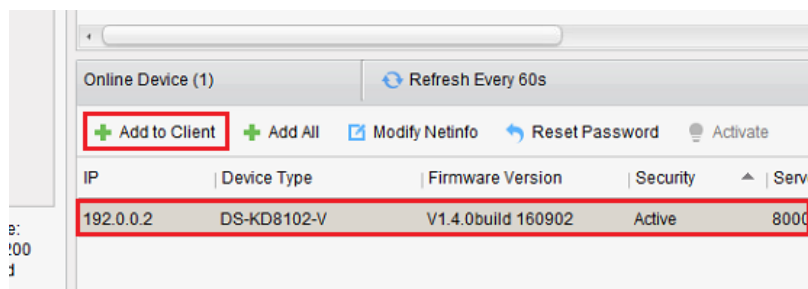
Apartment Door Station 7 = 192.0.0.8

Apartment Door Station 8 = 192.0.0.9

Once the IP address is set, enter in the password at the bottom which you used to activate it. Then click on OK.



9. Select the Door station from the bottom section and then click on 'Add to Client'.



10. Now you need to set some settings for this door station.

Nickname – Give the door station a name. In my example, it's going to be called 'Door 1'.

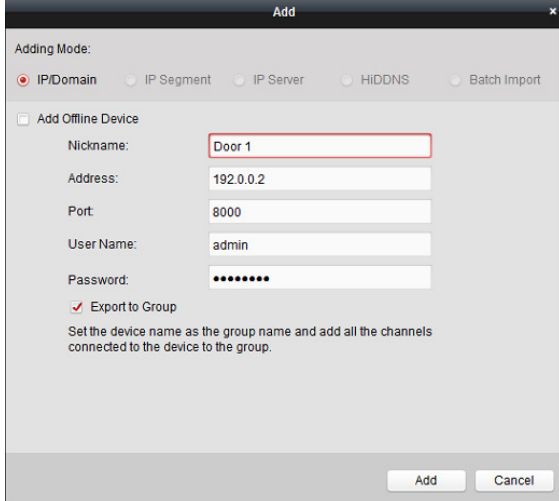
Address – Leave the IP address as it is

Port – Leave this as port 8000

Username – set this as admin

Password – Enter the password you used to activate the door station

Leave the Export to group ticked, once the above is set click on Add.



Adding Mode:
 IP/Domain IP Segment IP Server HIDDNS Batch Import

Add Offline Device

Nickname:

Address:

Port:

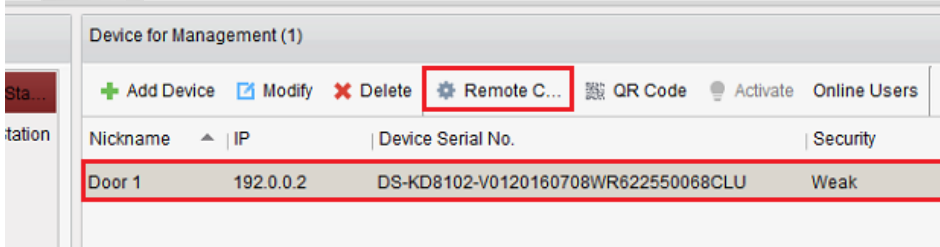
User Name:

Password:

Export to Group

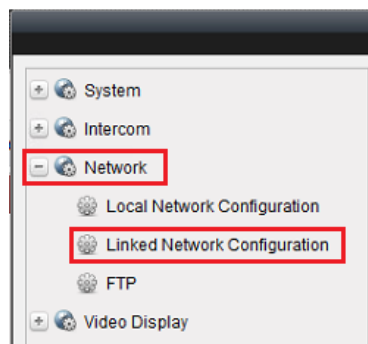
Set the device name as the group name and add all the channels connected to the device to the group.

11. Select the Door station from the top list, and click on 'Remote Configuration' from along the top.

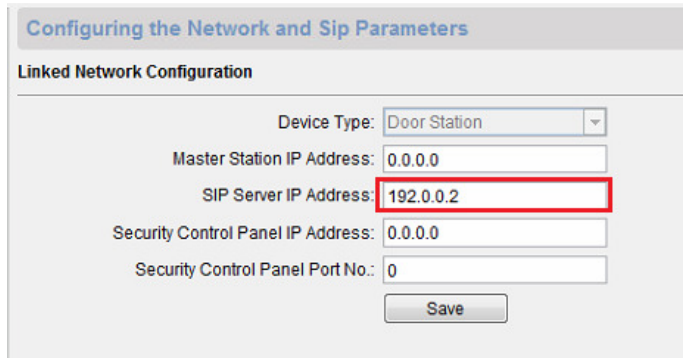


Nickname	IP	Device Serial No.	Security
Door 1	192.0.0.2	DS-KD8102-V0120160708WR622550068CLU	Weak

12. Click on 'Network' > 'Linked Network Configuration' from the left menu.



13. Change the SIP Server IP Address to **192.0.0.2** and leave the rest as default and then click Save.



Configuring the Network and Sip Parameters

Linked Network Configuration

Device Type: Door Station

Master Station IP Address: 0.0.0.0

SIP Server IP Address: 192.0.0.2

Security Control Panel IP Address: 0.0.0.0

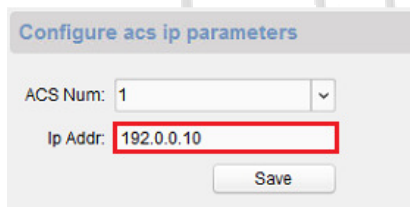
Security Control Panel Port No.: 0

Save

14. Select 'Intercom' > 'Lift Controller IP config' from the left menu.



15. Set the IP address to **192.0.0.10** and click on Save.



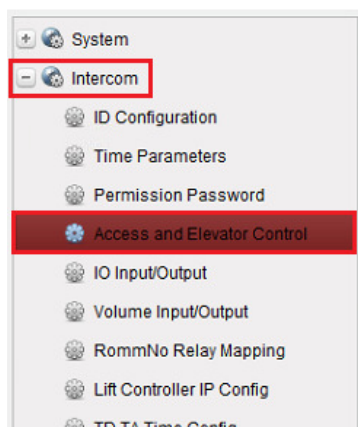
Configure acs ip parameters

ACS Num: 1

Ip Addr: 192.0.0.10

Save

16. Select 'Intercom' > 'Access and Elevator Control' from the left menu.



17. Set 'Enable or Not' to 'Yes', then click on Save.

Configuring the Door and Ladder Parameters

Access Control

Upload Alarm for Not-Closed Door

Door No.: 1

Door-unlocked Duration: 15 s

Card Encrypt

Save

Elevator Control

Elevator No.: 1

Interface Type: RS485

RS485 Protocol: Private

LAN Protocol:

Enable Or Not: Yes

Server IP Address: 0.0.0.0

Server Port: 0

Save

18. Select 'Intercom' > 'Room No Relay Mapping' from the left menu.

System

- Intercom
- ID Configuration
- Time Parameters
- Permission Password
- Access and Elevator Control
- IO Input/Output
- Volume Input/Output
- RoomNo Relay Mapping
- Lift Controller IP Config
- TD TA Time Config
- Lowest Floor Config

19. This section allow you to map the relay from the lift controller to a room.

This is used when the user presses the 'unlock' button on the room station and it will trigger a output on the left control.

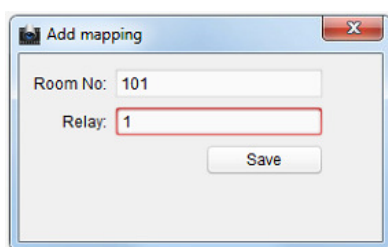
Click on the 'Add' button at add a room.

Configure roomNo relay mapping parameters

+ Add Edit Delete

Index	RoomNo	Relay
-------	--------	-------

20. In this example, when room station 101 presses the unlock button on the room station it will activate relay 1 on the lift control.



Repeat step 19 and 20 for each of the rooms that want to trigger the relays for.

Only 1 relay can be triggered per room.

21. Select 'Intercom' > 'TD TA Time Config' from the left menu.



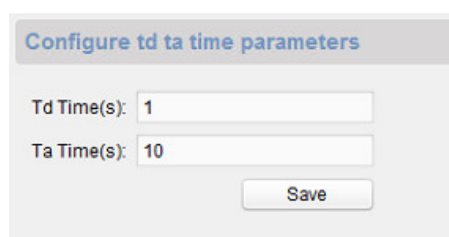
22. You now can set the time for the relay to stay active for.

Td Time(s) is how long before the relay gets triggered.

Ta Time(s) is how long the relay will stay active for.

Based on the example below, when the user presses the 'unlock' button from the room station, it will wait 1 second before activating the relay, and then the relay will stay active for 10 seconds.

Once the values have been set, click on Save.



23. Close the remote configuration screen and the system is setup.

Additional Information:

Customer Service

Phone: 1300 551 991 (M-F 8:30am – 5:00pm)

Email: customerservice@ness.com.au

YouTube: www.youtube.com/nesscorporation

Tech Note ID: 01161013AK

Revision: 1.0

