









Setting Up The HikVision Villa IP Intercom For The First Time

Revision 1.2

Introduction

This tech note will step you through the steps to setting up the HikVision Villa IP Intercom for the first time as a hardwired system.

Products

 <p>104-825S DS-KB8112-IM Video Intercom Water Proof Door Station</p>	 <p>104-825 DS-KD8002-VM Video Intercom Door Station</p>	 <p>104-826 DS-KD8102-V Video Intercom Door Station</p>	 <p>104-827 DS-KM8301 Video Intercom Master Station</p>
 <p>104-829 DS-KH8301-WT Video Intercom Room Station (WiFi)</p>	 <p>104-828 / 104-828B DS-KH8300 Video Intercom Room Station (White)</p>	 <p>104-834 DS-KAD612 Video Intercom Video/Audio Distributor (16 Port)</p>	 <p>104-833B DS-KAD606-N Video Intercom Video/Audio Distributor (8 Port)</p>

Firmware & Software

iVMS

iVMS 4200 version 2.6.2.50 Build 20170724 is required when following this tech note.

Firmware

Product	104-825S	104-825	104-826	104-827	104-829	104-828 / 104-828B
Firmware	V1.4.5 Build 170921	V1.4.71 Build 170515	V1.4.71 Build 170515	V1.4.71 Build 170515	V1.4.71 Build 170515	V1.4.71 Build 170515

This tech note has only been tested to only work with the above firmware & iVMS version.

Before you begin

If you are going to connect the IP Intercom to the customer's network, then you will need to get a list of IP Addresses that you can use in each device on the IP Intercom.

Keep in mind these IP addresses can't be used already on the customer's network and should not be part of the DHCP range.

Only one 104-825S can be connected and setup per system. You can't have both a 104-825S and 104-825/104-826/104-827 on the same system.

1.1 Release Notes

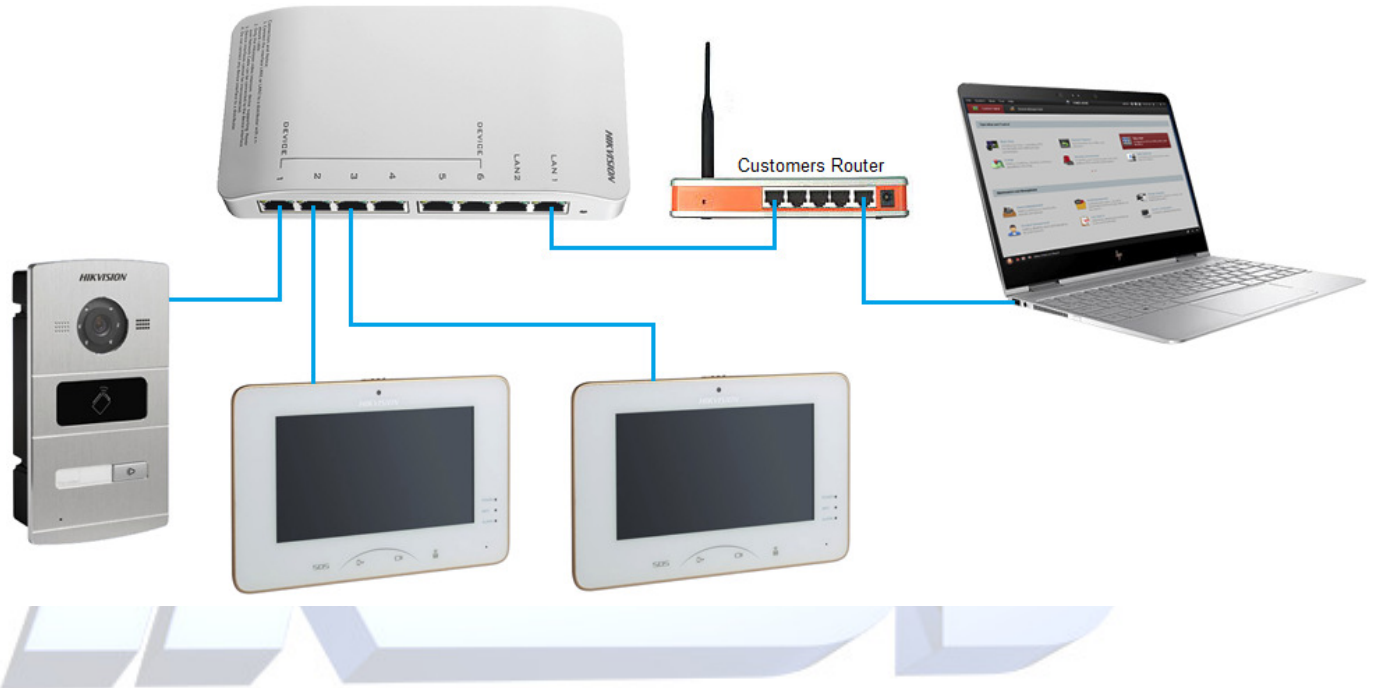
Firmware version: 1.4.71 Build 170515

- Maximum of room extensions is now only 5. (1 main + 5 sub rooms, total of 6 rooms).
- Limited screen tiles to only 1 page.
- Added a 'Sleep' button to turn off the screen. Touch the screen to wake it up. Room station will also wake up when incoming call is made.
- Turn on/off 'Scene Mode' and 'Elevator Control' tiles when not being used. (turned off by default)
- Multi Language support. (English default) After changing language device needs to be powered cycled for language to apply.
- Easier calling extensions.
- Changed the default admin password. Default is now 123456.
- Replaced 'Same LAN' button with 'Email Link'.
- Added missed call to email function. Email will include images from the door station when there is a missed called. (only 1 user can receive the email)
- Added function to switch between the IP Intercom Door Station camera and 1 CCTV camera when answering the incoming call from the door station.
- Added support for a hostname to be entered as the NTP server address.
- Input 3 on the indoor station can be used as a doorbell input.
- Hardwired Indoor station can now be connected to Hik-Connect by the network cable.
- Enhanced the audio streaming to make it more reliable.
- Audio volume is now louder than before.
- Added monitor mode to have audio streaming on the indoor station.
- Issue cards without card issuer.
- Audio button on live view now changes state when pressed.
- Indoor station now supports IPC & NVR sub stream 640x360, H.264 via RTSP.
- Enhanced voice messages. ("Sorry, no one is home...")
- Fixed indoor station ringtone import issue.

1.2 Wiring Diagram

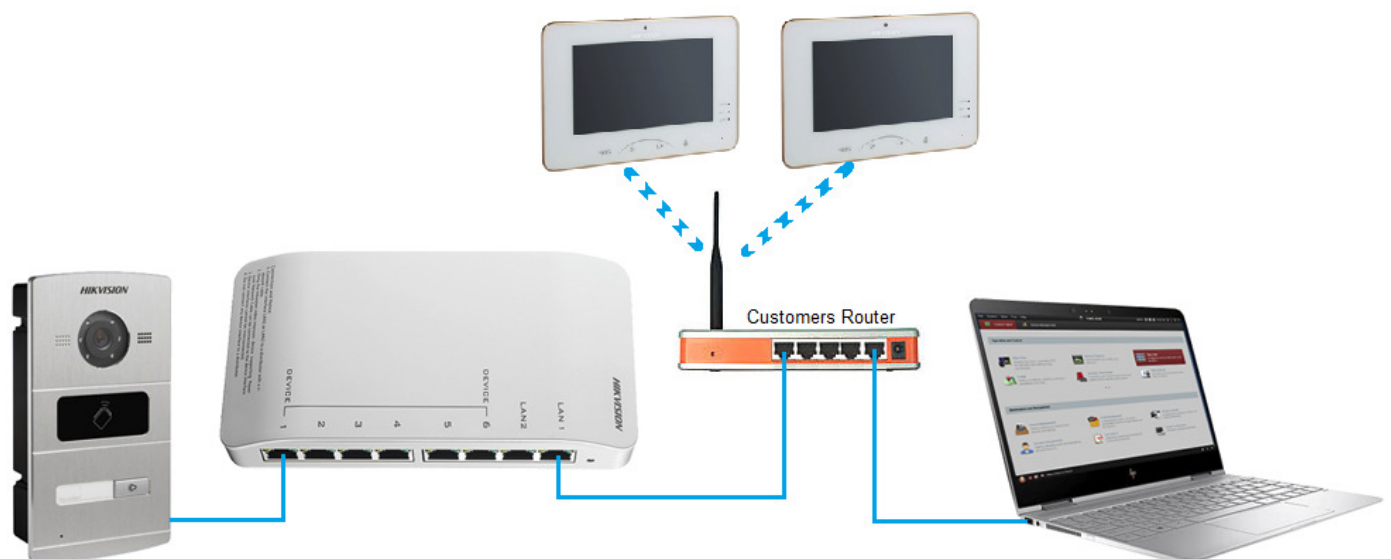
Hardwired

When setting up the system as a hardwired system, then all indoor touch screens need to be hardwired to the video distributor. WiFi should be turned off on all touch screens. The video distributor then gets connected by either Lan1 or Lan2 on the video distributor to the customer's network.



Wireless (WiFi)

When setting up the system as a WiFi system, then all indoor touch screens need to be connected to the customer's WiFi network. The Door station will still need to be hardwired to the video distributor, then gets connected by either Lan1 or Lan2 on the video distributor to the customer's network.

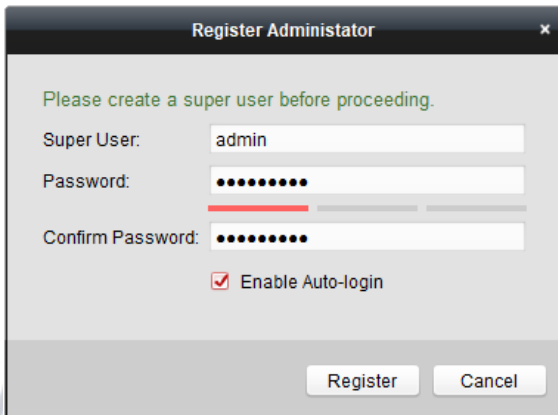


1.3 Setting Up iVMS 4200

When you open iVMS 4200 for the first time it will ask you to enter a super user and password.

Enter in a secure username and password and click Register.

This will be the username and password to open the iVMS software. You can enable the 'Enable Auto-Login' so that the software doesn't ask you to enter in your username and password each time the iVMS software opens.

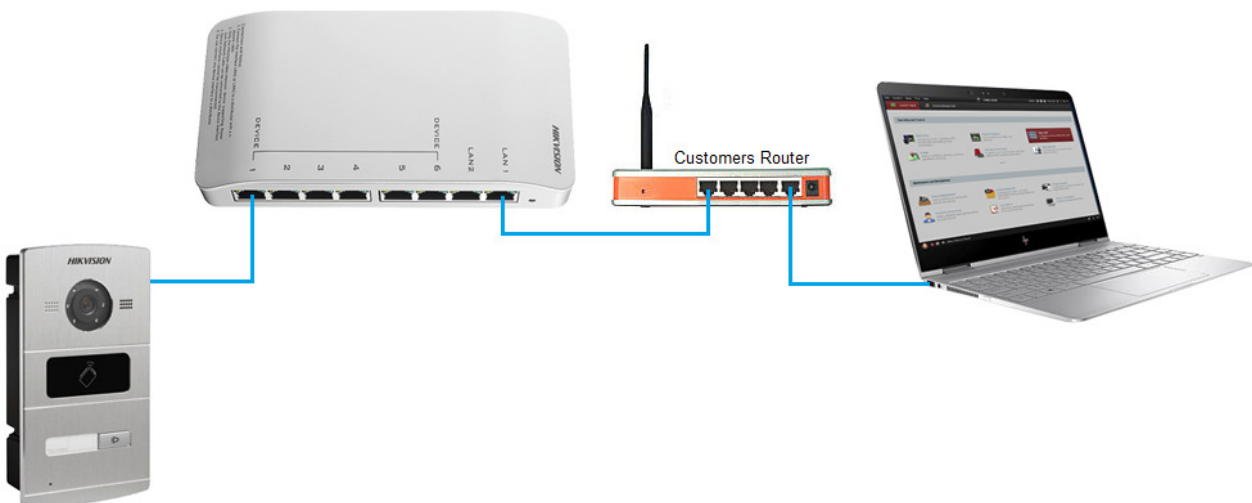


1.4 Setting Up Door Station

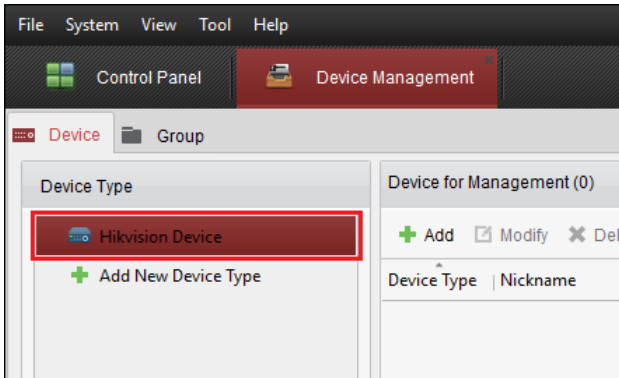
If setting up a 104-825S, then please follow the steps on page 18.

1. Plug in the door station into the HikVision Video Distribution PoE switch.

Note: The door station needs to be plugged into any of the first 6 ports.

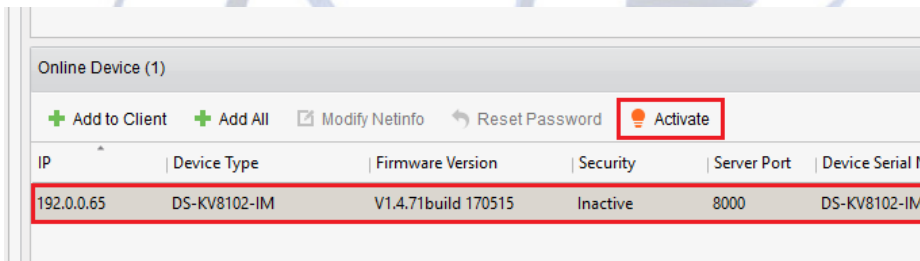


2. Select 'HikVision Device' from the left menu.

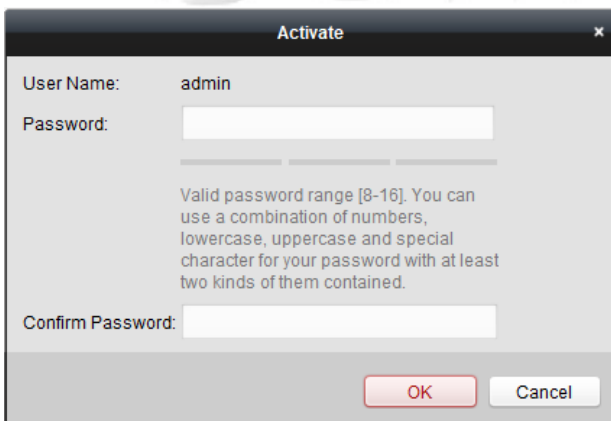


3. Select the door station from the list and click 'Activate'.

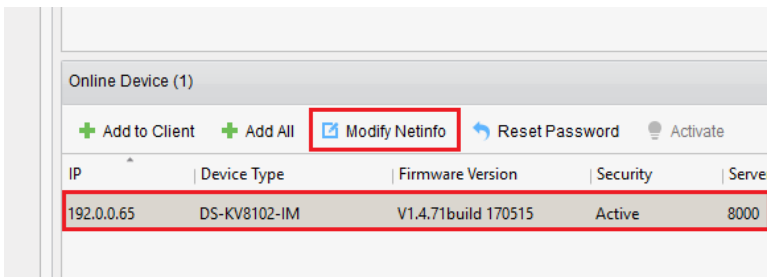
Note, it may take 1-2 minutes for your door station to appear after it has been powered up.



4. Enter in an activation password for this door station. You will need to remember this password as you will need it for later on.

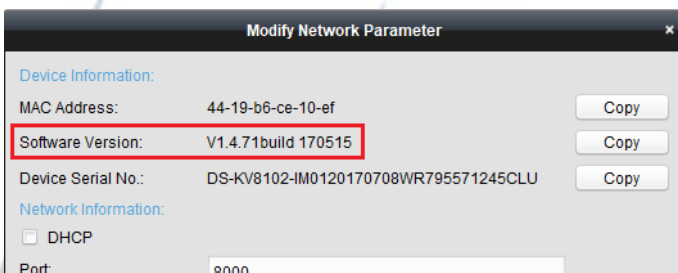


5. Once your door station has been activated, click on the door station from the list and click on 'Modify NetInfo'



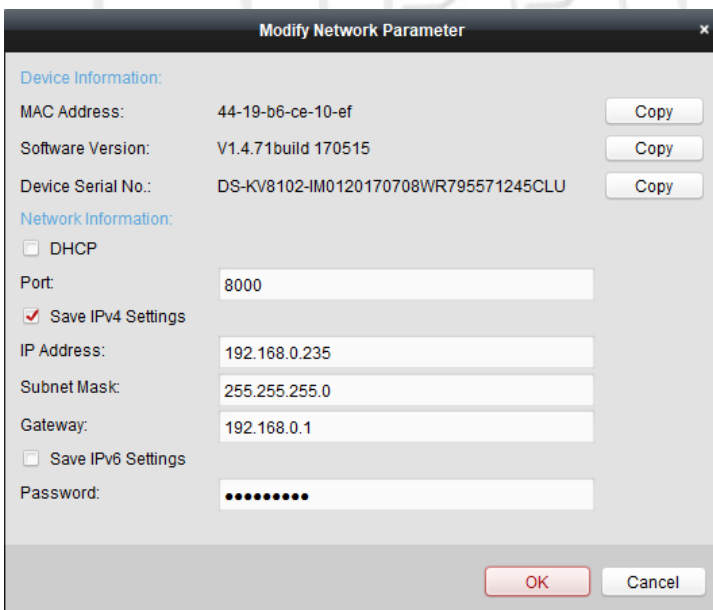
6. Make sure the Software version shows 'V1.4.71 build 170515'.

If your software version is different then you will need to update the firmware in your door station.

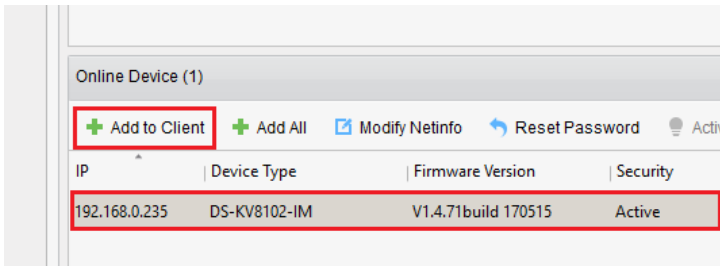


7. Change the network setting to match the networks settings of the customer's network. Make sure the IP address you use hasn't already been used on the customer's network.

Enter the password you used to activate this door station and then click on OK.

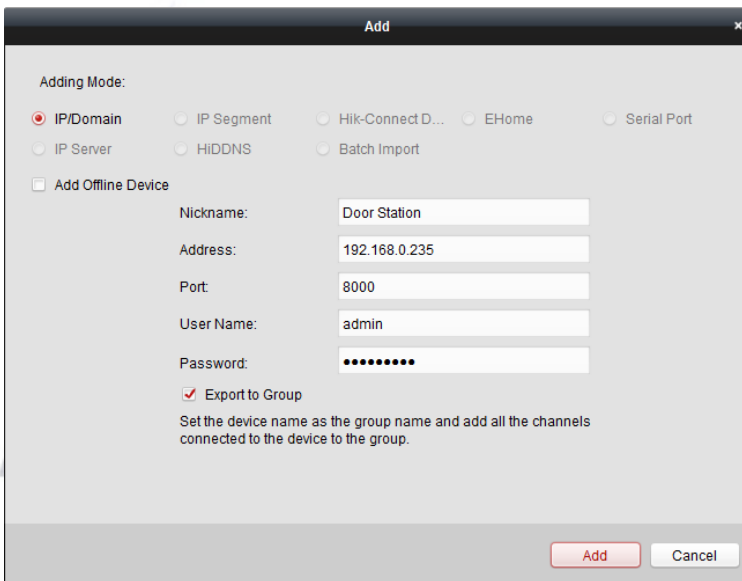


8. Select the door station and then click on 'Add to Client'

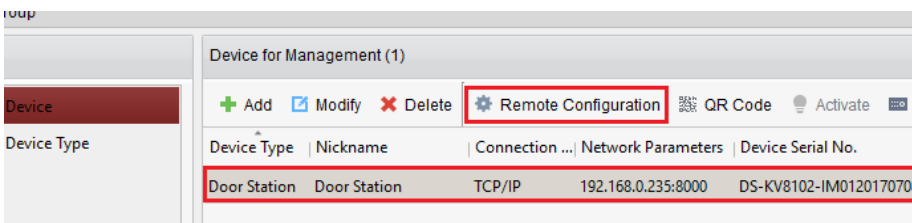


9. Give the door station a name.

Enter the password you used to activate the door station and click 'Add'.

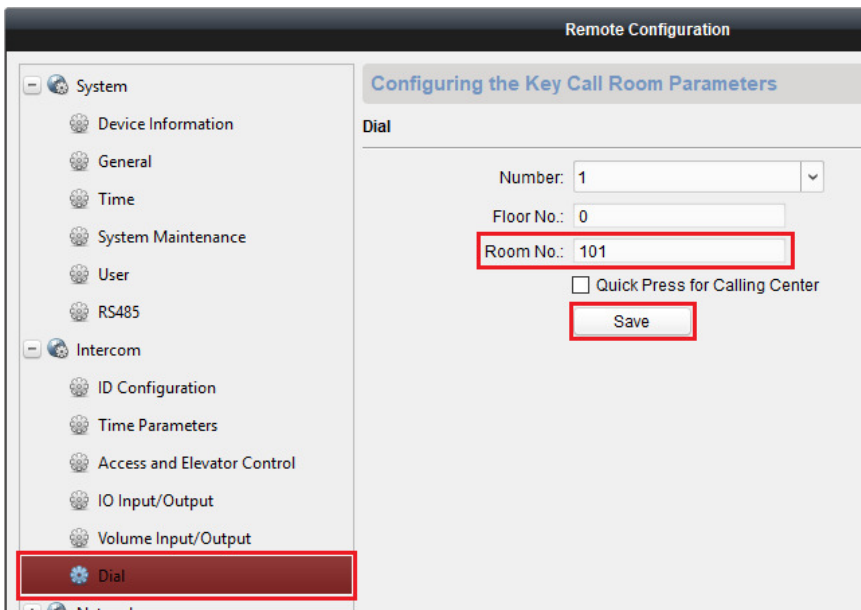


10. Once your device has been added, click on it from the list up the top, then click 'Remote Configuration'.



11. Select 'Intercom' > 'Dial' from the left menu.

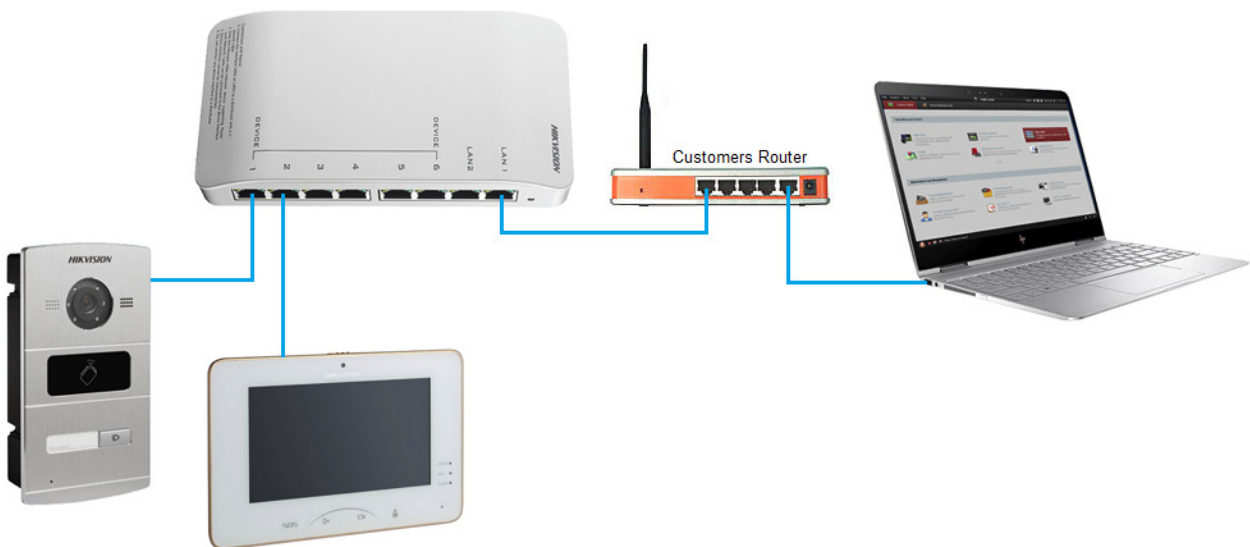
If your door station has multiple numbers, then you will need to do this for each of the buttons.



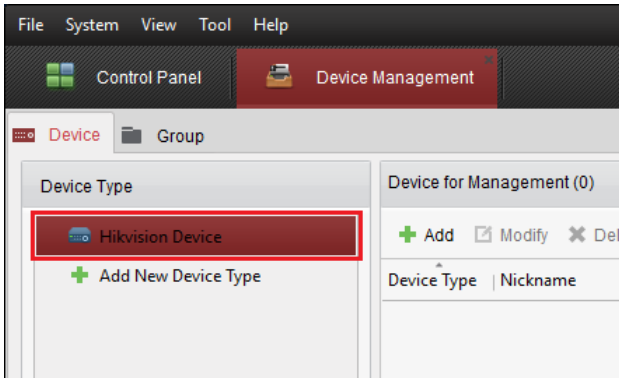
1.5 Setting Up Main Room Station

1. Plug in the touch screen into the HikVision Video Distribution PoE switch.

Note: The touch screen needs to be plugged into any of the first 6 ports.



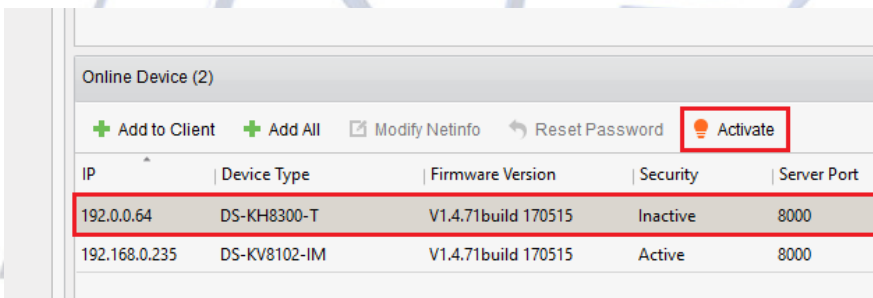
2. Select 'HikVision Device' from the left menu.



3. Select the room station from the list and click 'Activate'.

Note, it may take 1-2 minutes for your room station to appear after it has been powered up.

4. Select the room station from list and click activate.



5. Enter in an activation password for this room station. You will need to remember this password as you will need it for later on.

The 'Activate' dialog box has a title bar with 'Activate' and a close button. It contains the following fields and text:

User Name: admin

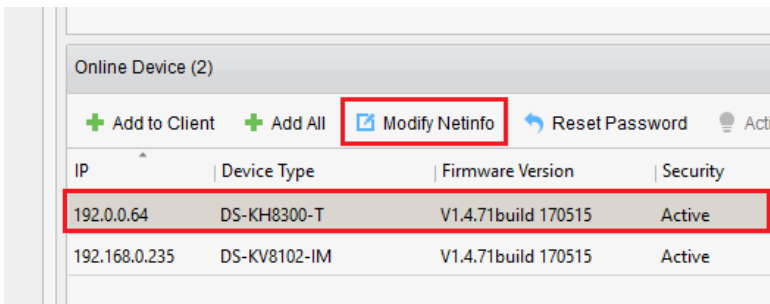
Password:

Valid password range [8-16]. You can use a combination of numbers, lowercase, uppercase and special character for your password with at least two kinds of them contained.

Confirm Password:

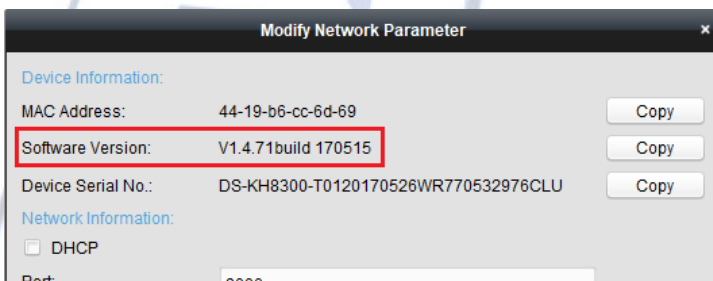
Buttons: OK, Cancel

6. Once your room station has been activated, click on the room station from the list and click on 'Modify NetInfo'.



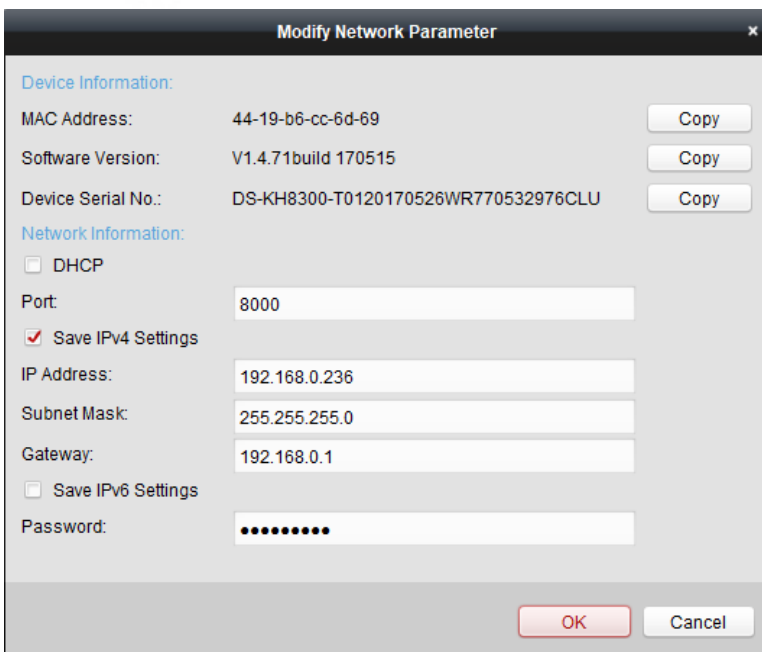
7. Make sure the Software version shows 'V1.4.71 build 170515'.

If your software version is different then you will need to update the firmware in your room station.

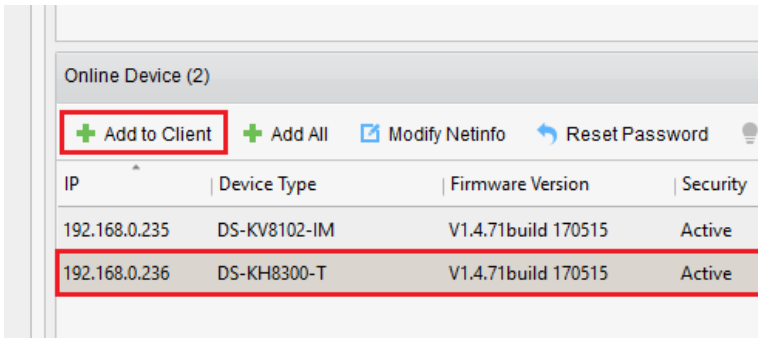


8. Change the network setting to match the networks settings of the customer's network. Make sure the IP address you use hasn't already been used on the customer's network.

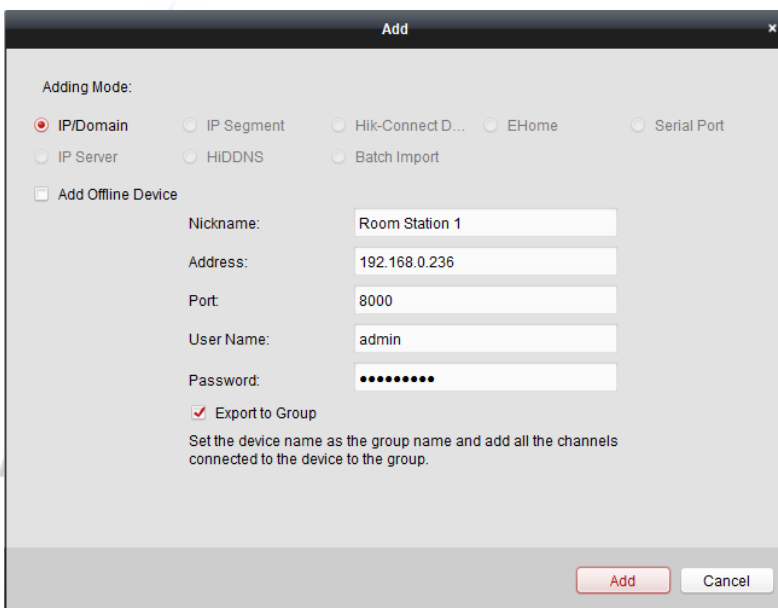
Enter the password you used to activate this room station and then click on OK.



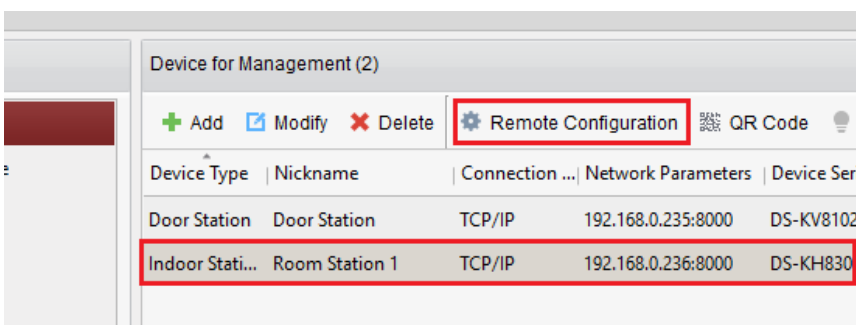
9. Select the room station and then click on 'Add to Client'



10. Give the room station a name and then enter the password you activated the room station with then click 'Add'.

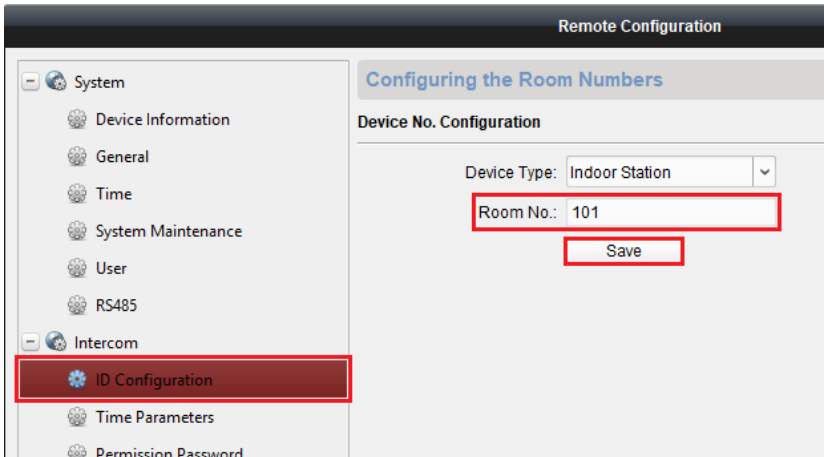


11. Select the room station from the list up the top, and then click 'Remote Configuration'.



12. Select 'Intercom' > 'ID Configuration' from the left side menu and then enter in the room number that was used while setting up the door station.

Then click Save.



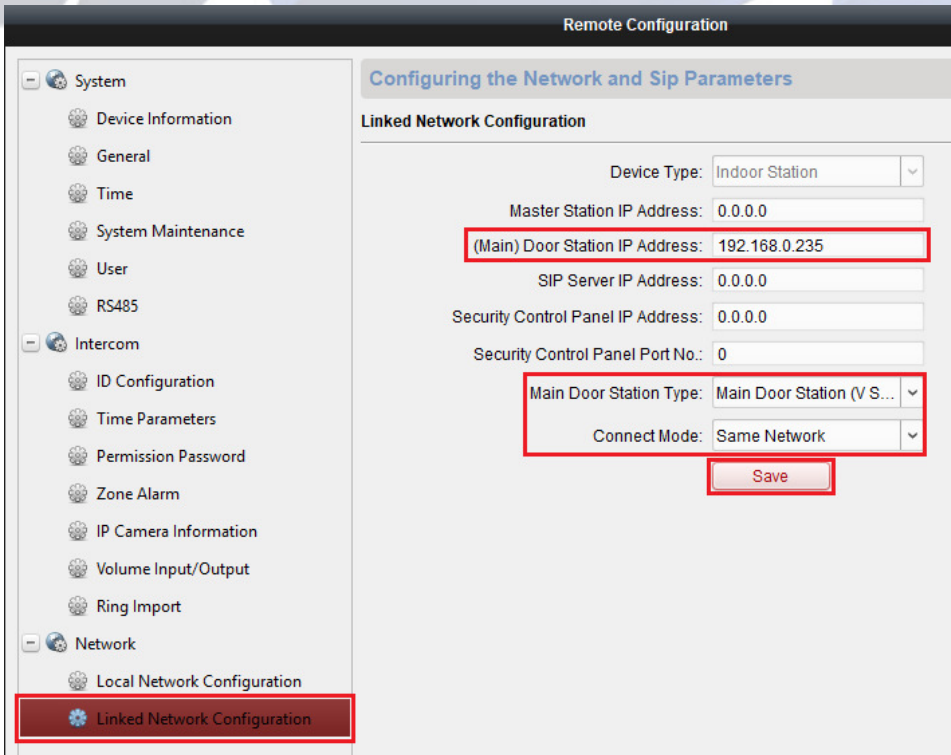
13. Select 'Network' > 'Linked Network Configuration' from the left side menu, and then enter in the door station IP address.

Note: If you are using a 104-825S that you would enter that IP address as the main door station IP address.

Change the 'Main Door Station Type' to 'Main Door Station (V Series)'.

Change 'Connect Mode' to 'Same Network'.

Then click Save.



The Main room station is now setup and the room station will now ring when the doorbell has been pressed.

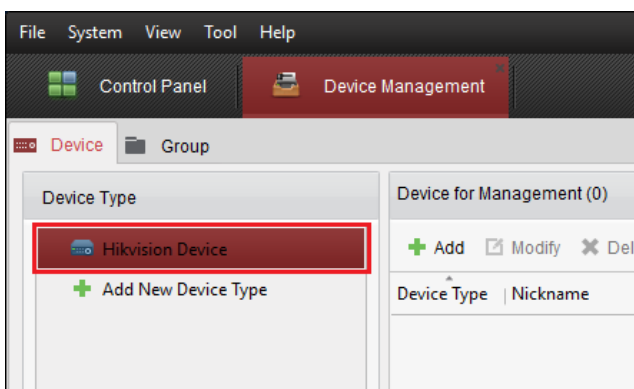
1.6 Setting Up Sub Room Station

1. Plug in the touch screen into the HikVision Video Distribution PoE switch.

Note: The touch screen needs to be plugged into any of the first 6 ports.



2. Select 'HikVision Device' from the left menu.



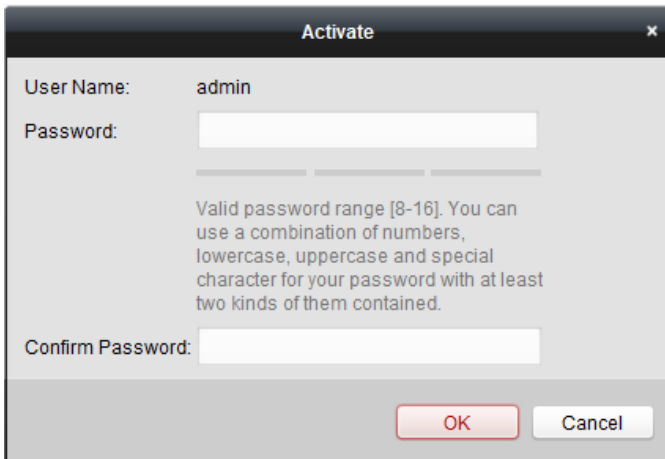
3. Select the room station from the list and click 'Activate'.

Note, it may take 1-2 minutes for your room station to appear after it has been powered up.

The screenshot shows the 'Online Device (3)' section of the HikVision management interface. The 'Activate' button is highlighted. Below the button is a table with columns for IP, Device Type, Firmware Version, Security, Server Port, and Device Serial N.

IP	Device Type	Firmware Version	Security	Server Port	Device Serial N
192.0.0.64	DS-KH8300-T	V1.4.71build 170515	Inactive	8000	DS-KH8300-T0
192.168.0.235	DS-KV8102-IM	V1.4.71build 170515	Active	8000	DS-KV8102-IM
192.168.0.236	DS-KH8300-T	V1.4.71build 170515	Active	8000	DS-KH8300-T0

4. Enter in an activation password for this room station. You will need to remember this password as you will need it for later on.



Activate

User Name: admin

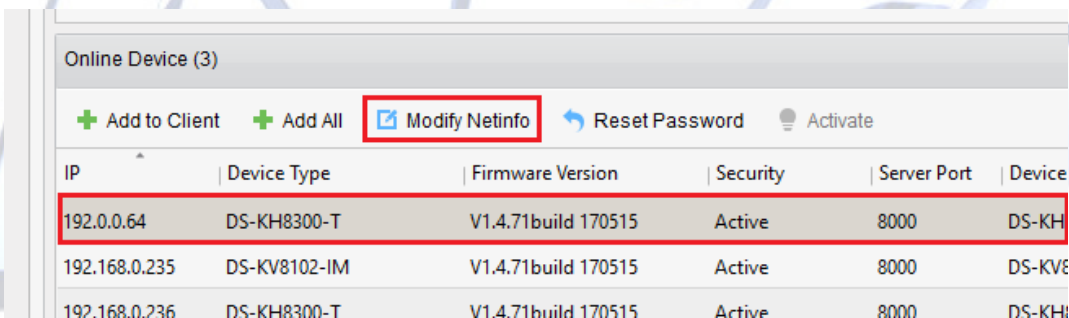
Password:

Valid password range [8-16]. You can use a combination of numbers, lowercase, uppercase and special character for your password with at least two kinds of them contained.

Confirm Password:

OK Cancel

5. Once your room station has been activated, click on the room station from the list and click on 'Modify NetInfo'.



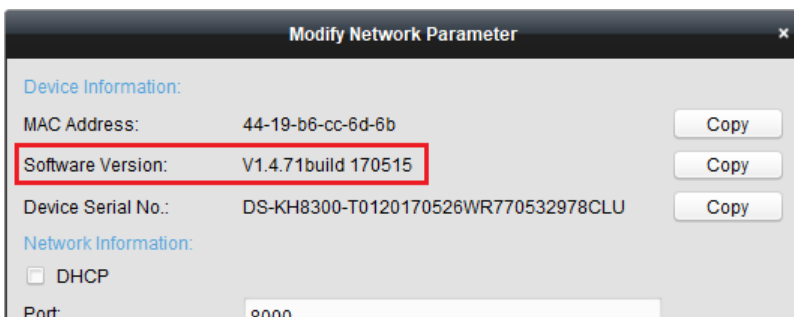
Online Device (3)

+ Add to Client + Add All **Modify NetInfo** Reset Password Activate

IP	Device Type	Firmware Version	Security	Server Port	Device
192.0.0.64	DS-KH8300-T	V1.4.71build 170515	Active	8000	DS-KH
192.168.0.235	DS-KV8102-IM	V1.4.71build 170515	Active	8000	DS-KV8
192.168.0.236	DS-KH8300-T	V1.4.71build 170515	Active	8000	DS-KH

6. Make sure the Software version shows 'V1.4.71 build 170515'.

If your software version is different then you will need to update the firmware in your room station.



Modify Network Parameter

Device Information:

MAC Address: 44-19-b6-cc-6d-6b Copy

Software Version: V1.4.71build 170515 Copy

Device Serial No.: DS-KH8300-T0120170526WR770532978CLU Copy

Network Information:

DHCP

Port: 8000

7. Change the network setting to match the networks settings of the customer’s network. Make sure the IP address you use hasn’t already been used on the customer’s network.

Enter the password you used to activate this room station and then click on OK.

Modify Network Parameter

Device Information:

MAC Address: 44-19-b6-cc-6d-6b

Software Version: V1.4.71build 170515

Device Serial No.: DS-KH8300-T0120170526WR770532978CLU

Network Information:

DHCP

Port: 8000

Save IPv4 Settings

IP Address: 192.168.0.237

Subnet Mask: 255.255.255.0

Gateway: 192.168.0.1

Save IPv6 Settings

Password:

8. Select the room station you just activated and then click on ‘Add to Client’.

Online Device (3)

IP	Device Type	Firmware Version	Security	Server Port	Device Serial
192.168.0.235	DS-KV8102-IM	V1.4.71build 170515	Active	8000	DS-KV8102
192.168.0.236	DS-KH8300-T	V1.4.71build 170515	Active	8000	DS-KH8300
192.168.0.237	DS-KH8300-T	V1.4.71build 170515	Active	8000	DS-KH8300

9. Give the room station a name and then enter the password you activated the room station with then click ‘Add’.

Add

Adding Mode:

IP/Domain IP Segment Hik-Connect D... EHome Serial Port

IP Server HIDDNS Batch Import

Add Offline Device

Nickname: Room Station 2

Address: 192.168.0.237

Port: 8000

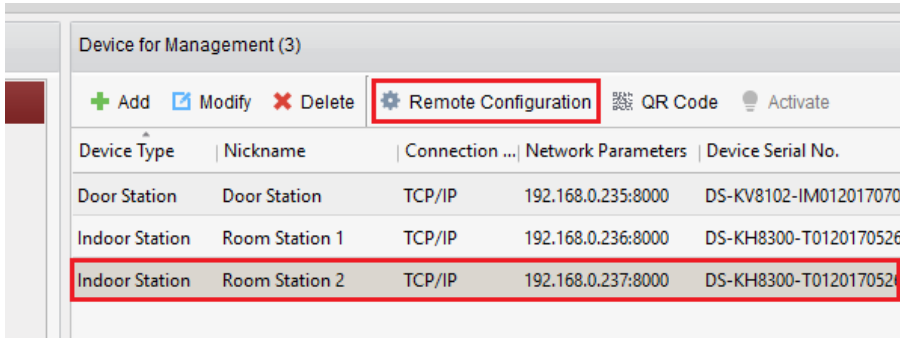
User Name: admin

Password:

Export to Group

Set the device name as the group name and add all the channels connected to the device to the group.

10. Select the room station from the list up the top, and then click 'Remote Configuration'.



Device Type	Nickname	Connection ...	Network Parameters	Device Serial No.
Door Station	Door Station	TCP/IP	192.168.0.235:8000	DS-KV8102-IM012017070
Indoor Station	Room Station 1	TCP/IP	192.168.0.236:8000	DS-KH8300-T0120170526
Indoor Station	Room Station 2	TCP/IP	192.168.0.237:8000	DS-KH8300-T0120170526

11. Select 'Intercom' > 'ID Configuration' from the left side menu.

12. You can have up to 5 sub room stations per system. (1 Main Room Station + 5 Sub room station. Total of 6 Room Stations).

Change the Device Type to 'Station Extension' since this is a sub room station we are adding.

Each sub room station needs to be set as:

Room Station 1: This is the main Room Station

Room Station 2: No = 1

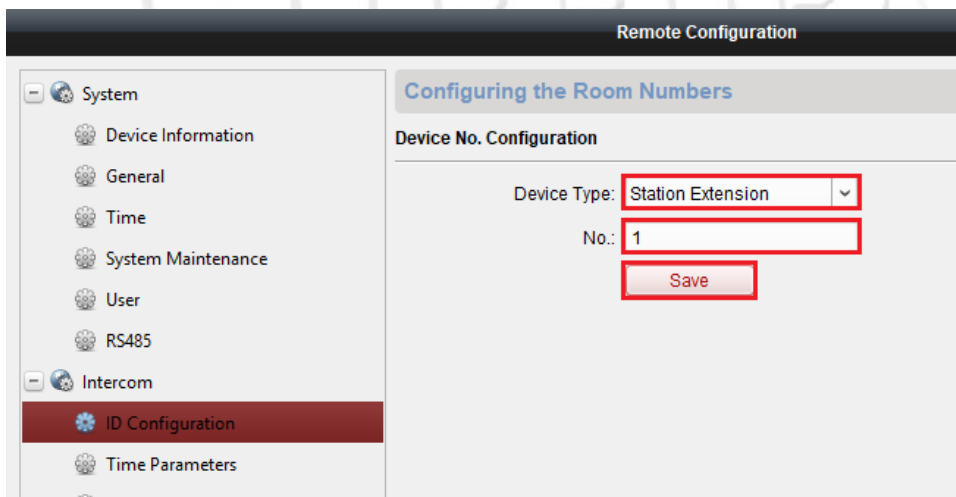
Room Station 3: No = 2

Room Station 4: No = 3

Room Station 5: No = 4

Room Station 6: No = 5

Once the No. and station extension has been set, press Save.



Remote Configuration

System

- Device Information
- General
- Time
- System Maintenance
- User
- RS485

Intercom

- ID Configuration**
- Time Parameters

Configuring the Room Numbers

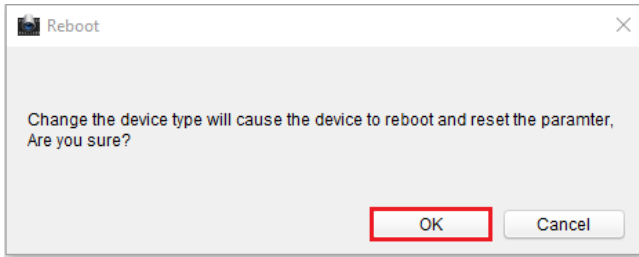
Device No. Configuration

Device Type: Station Extension

No.: 1

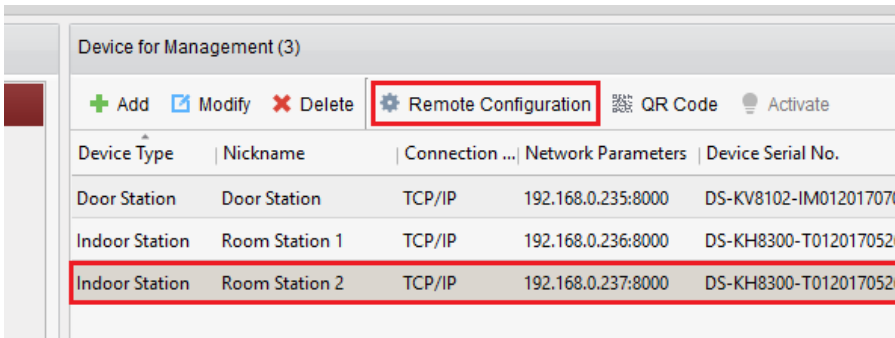
Save

13. The Room Station needs to reboot after pressing Save. Click on OK to reboot the device.



Wait until the room station reboots before continuing.

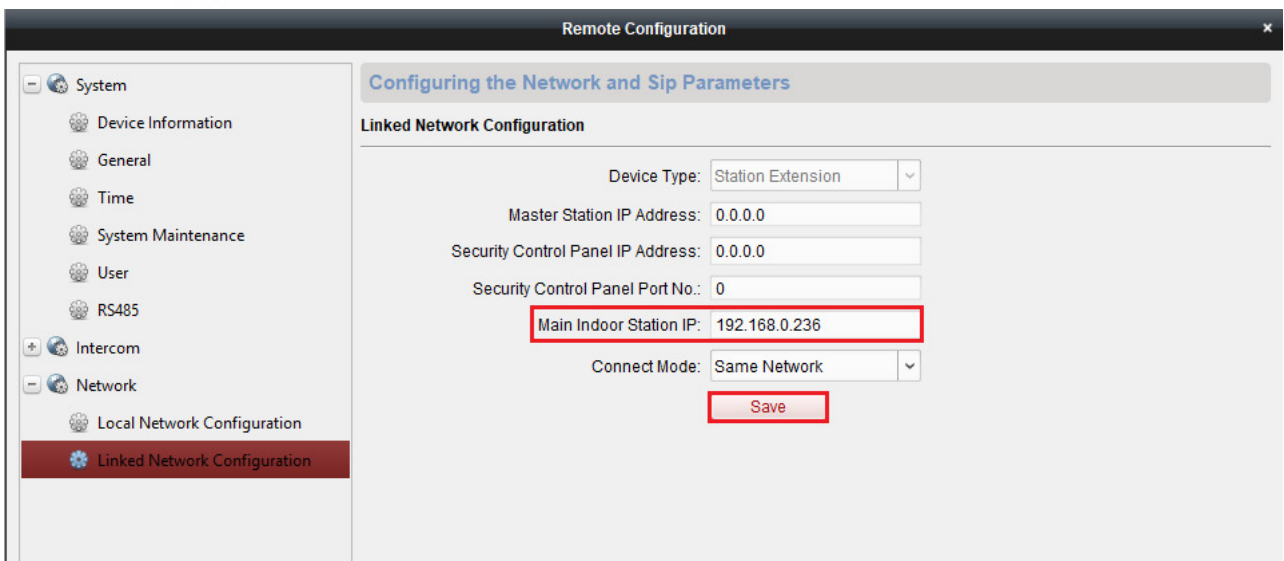
14. Re-Select the room station from the list up the top, and click 'Remote Configuration'.



15. Select 'Network' > 'Linked Network Configuration' from the left side menu.

16. Change the 'Main Indoor Station IP' to the IP address you used in the main room station.

Then click Save.



The Main room station is now setup and the room station will now ring when the doorbell has been pressed.

You need to do this for each of the sub room stations you are adding to the system.

1.7 Setting Up 104-825S Door Station

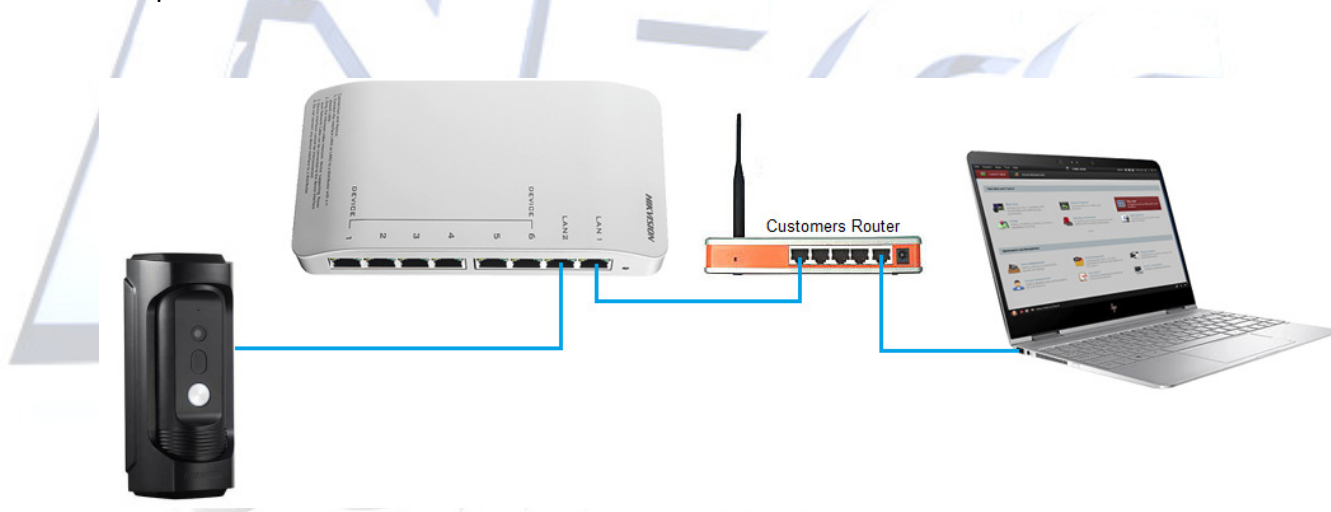
This door station powers up from 48v PoE or 12vDC.

Do not connect it to a PoE port on the Video Distribution switch.

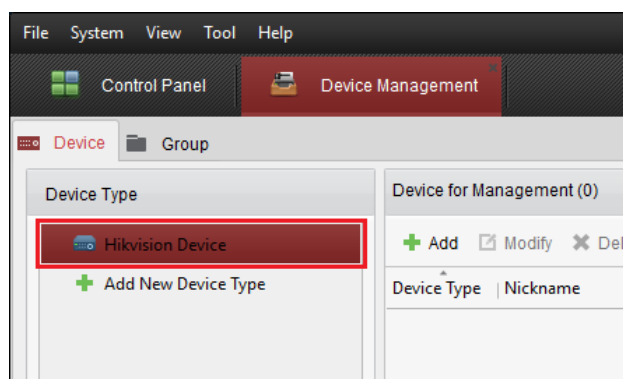
You can connect it to either LAN1 or LAN2 on the HikVision Video Distribution PoE switch as it is just a standard LAN ports with no PoE.

1. Plug in the door station into your computer network or if you have LAN1 or LAN2 spare on the HikVision Video Distribution then you can use that. You would need to power it up from 12vDC or from a 48v PoE port.

Note: Do not connect it to any other ports on the HikVision Video Distribution other than LAN1 or LAN2 as they most likely cause the product to go faulty due to it giving it a 24v PoE power.



2. Select 'HikVision Device' from the left menu.



3. Select the door station from the list and click 'Activate'.

Note, it may take 1-2 minutes for your door station to appear after it has been powered up.

Online Device (8)						
IP	Device Type	Firmware Version	Security	Server Port	Device Ser	
192.0.0.65	DS-KB8112-IM	V1.4.5build 170921	Inactive	8000	DS-KB811-	

4. Enter in an activation password for this door station. You will need to remember this password as you will need it for later on.

Activate

User Name: admin

Password:

Valid password range [8-16]. You can use a combination of numbers, lowercase, uppercase and special character for your password with at least two kinds of them contained.

Confirm Password:

5. Once your door station has been activated, click on the door station from the list and click on 'Modify NetInfo'

IP	Device Type	Firmware Version	Security	Server Port	Device Serial
192.0.0.65	DS-KB8112-IM	V1.4.5build 170921	Active	8000	DS-KB8112-

6. Make sure the Software version shows 'V1.4.5 build 170921'

If your software version is different then you will need to update the firmware in your door station.

Modify Network Parameter

Device Information:

MAC Address: 44-19-b6-c8-44-6b

Software Version: **V1.4.5build 170921**

Device Serial No.: DS-KB8112-IM0120161104WR671830757CLU

Network Information:

DHCP

Port: 8000

7. Change the network setting to match the networks settings of the customer's network. Make sure the IP address you use hasn't already been used on the customer's network.

Enter the password you used to activate this door station and then click on OK.

Modify Network Parameter

Device Information:

MAC Address: 44-19-b6-c8-44-6b Copy

Software Version: V1.4.5build 170921 Copy

Device Serial No.: DS-KB8112-IM0120161104WR671830757CLU Copy

Network Information:

DHCP

Port: 8000

Save IPv4 Settings

IP Address: 192.168.0.70

Subnet Mask: 255.255.255.0

Gateway: 192.168.0.1

Password: ●●●●●●●●

OK Cancel

Additional Information:

Customer Service

Phone: 1300 551 991 (M-F 8:30am – 5:00pm)

Email: customerservice@ness.com.au

YouTube: www.youtube.com/nesscorporation