

Title:	How to Configure Motion Detection Alarm via iVMS-4200	Version:	v1.0	Date:	3/9/2017
Product:	iVMS-4200	Page:	1 of 4		

How to Configure Motion Detection Alarm via iVMS-4200

Description

This file could help you to configure motion detection alarm via iVMS-4200 and know better of the GUI of Alarm Event.

Preparation

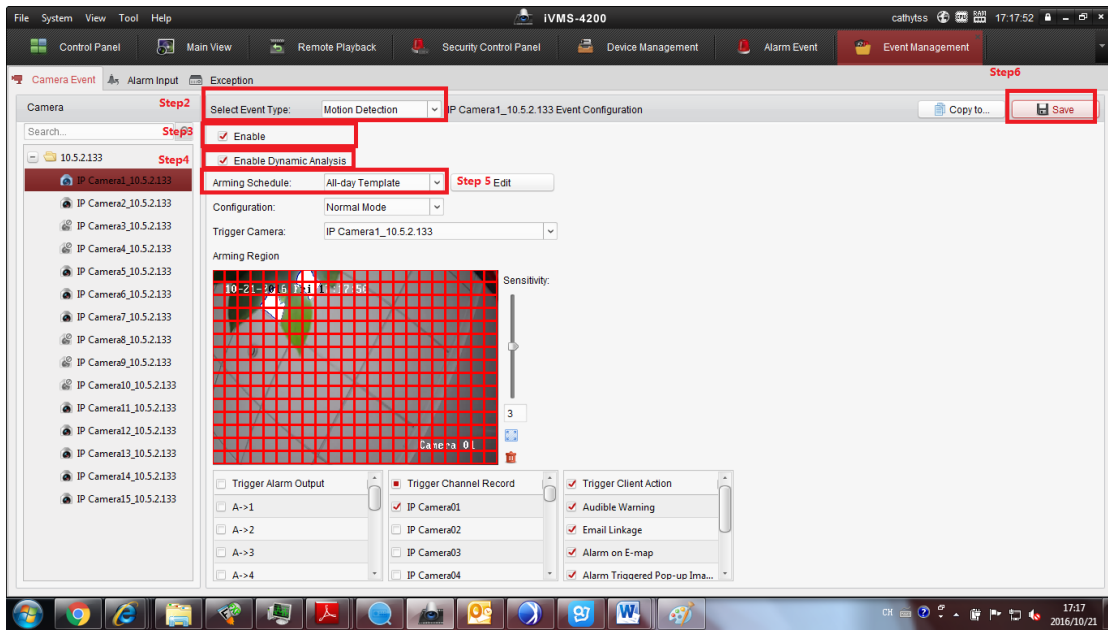
1. Download iVMS-4200 and install it on PC.
2. Add the device to iVMS-4200 in advance.

How to Configure Motion Detection Alarm via iVMS-4200

Steps:

1. Open the **Event Management** page and click **Camera Event** tab.
2. Select the camera to be configured and select **Motion Detection** as the event type.
3. Check the checkbox **Enable** to enable the function of motion detection. Check the checkbox **Enable Dynamic Analysis** to mark the detected objects with green rectangles in live view and playback.
4. Select the arming schedule template from the drop-down list.
5. Check the checkboxes to activate the linkage actions.
6. Click **Save** to save the settings.

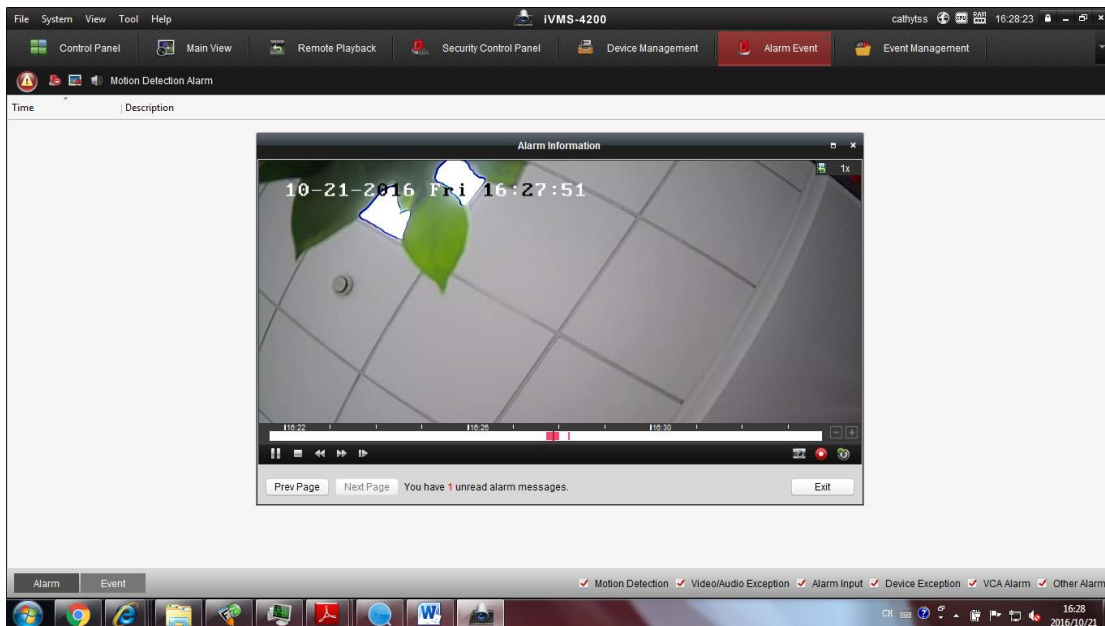
Title:	How to Configure Motion Detection Alarm via iVMS-4200	Version:	v1.0	Date:	3/9/2017
Product:	iVMS-4200	Page:	2 of 4		



7. If the alarm triggered, it will pop up the image as the following picture.

NOTE:

- 1) If there's no video, the pop-up window will display the live view.
- 2) If it has recording file, it will pop up the recording file and play back it. (The recording file could be stored in HDD and storage server)

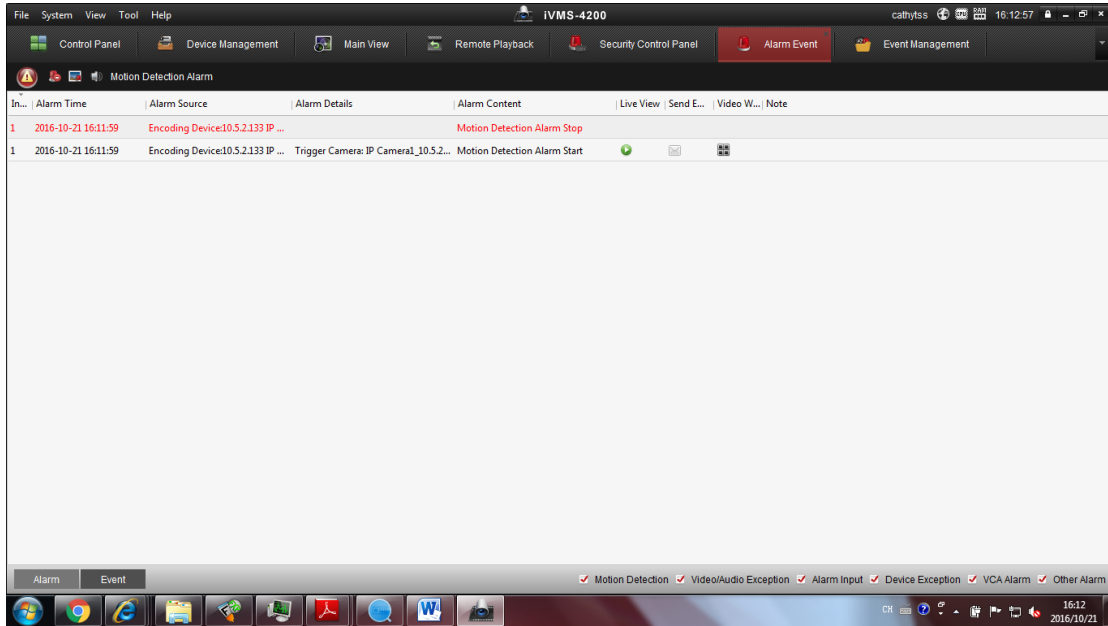


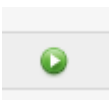
Introduction of Alarm event GUI


1, When an alarm occurs, the icon  twinkles to call attention. The alarm information,


Title:	How to Configure Motion Detection Alarm via iVMS-4200	Version:	v1.0	Date:	3/9/2017
Product:	iVMS-4200	Page:	3 of 4		

including the time, source, details and content will be displayed as the following picture.





2, Click  to get a live view of the alarm triggered camera.


3, Click  to send an Email notification of the alarm to one or more receivers if the email settings are properly configured

4, Click  to display the video of alarm triggered camera on the Video Wall. You can enter the Video Wall interface to check the alarm triggered video playing on the screen which set as the alarm window. The physical video wall also displays the video.

Note: You should add decoding device and configure the video wall.

5, Click  to clear the alarm information, or right-click on an alarm log and then click Clear.

6, Click  to enable/disable alarm triggered pop-out image.

7, Click  to enable/disable audio.

8, All the alarm are classified as follows:



Click the checkbox of Motion Detection, it will list all the motion detection alarms.

9, Click  or  to check the recording of the motion detection alarm of different time.

Title:	How to Configure Motion Detection Alarm via iVMS-4200	Version:	v1.0	Date:	3/9/2017
Product:	iVMS-4200	Page:	4 of 4		



First Choice for Security Professionals

***HIKVISION* Technical Support**