

## How to use telnet command

### Description

While applying the DDNS function, we need to open three ports: 80, 8000,554. There is a simple way to find out whether these ports have been opened or not. And that is the telnet command.

### Preparation

- 1, IPC/DVR/NVR...
- 2, PC(OS WIN7)

### How to enable the Telnet function in your PC

We would always use the telnet command in order to test whether the ports have been opened, however, this command is disabled in WIN 7 OS as default.

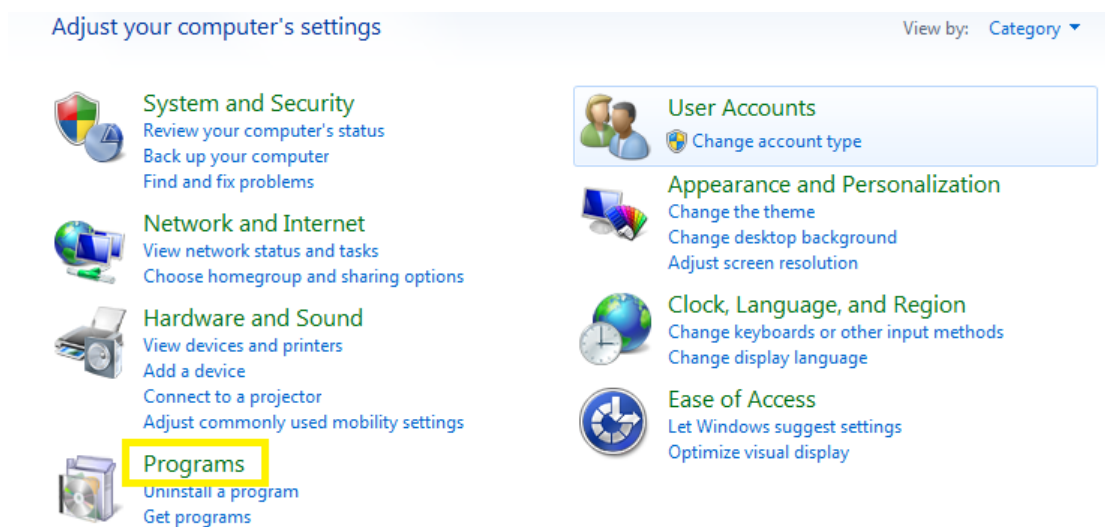
*Note:* If you are running WIN8/WIN10 or other OS, please kindly search how to enable the telnet function online by yourself.

#### **Steps:**

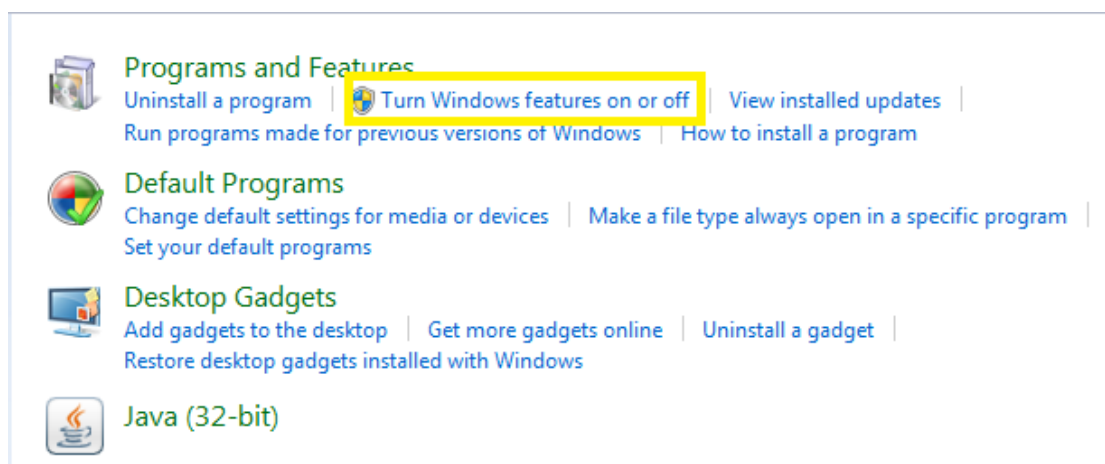
- 1, click the **Control Panel** in Start Menu.



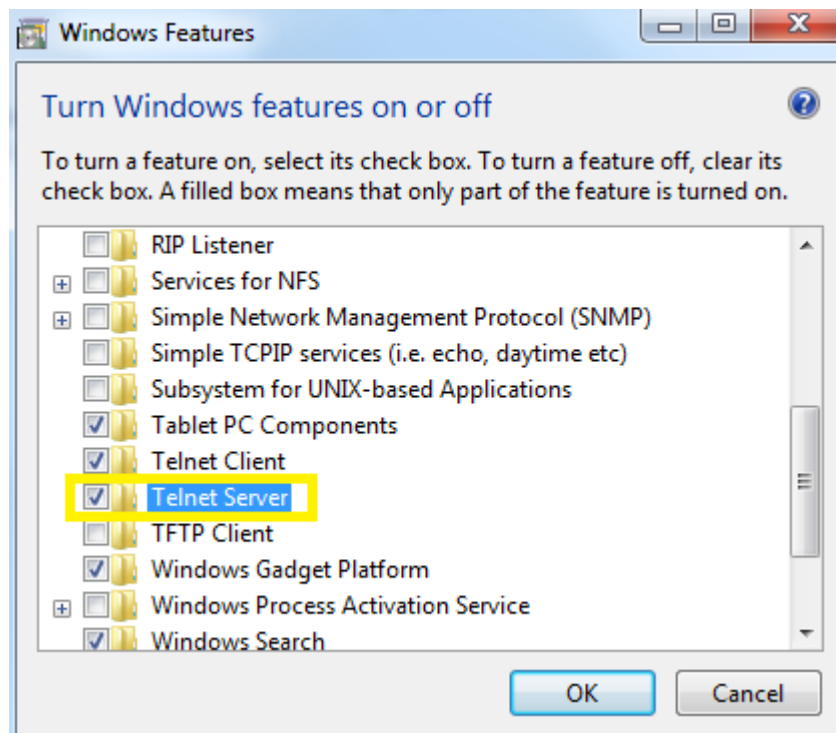
2, click **Programs** in Control Panel



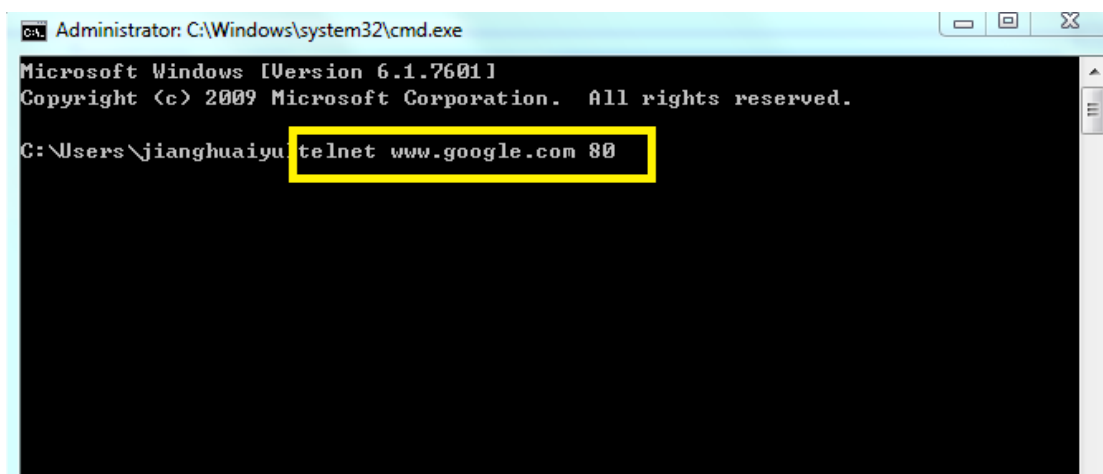
3, click **Turn Windows features on or off**.



4, find the **Telnet Server** in the dialog box and enable it. Then click **OK**. Wait a few minutes and the system would enable this service for you.



5, run the telnet command in cmd to test whether this service has been opened.



6, if it comes to this interface, it means the telnet service has already been opened.

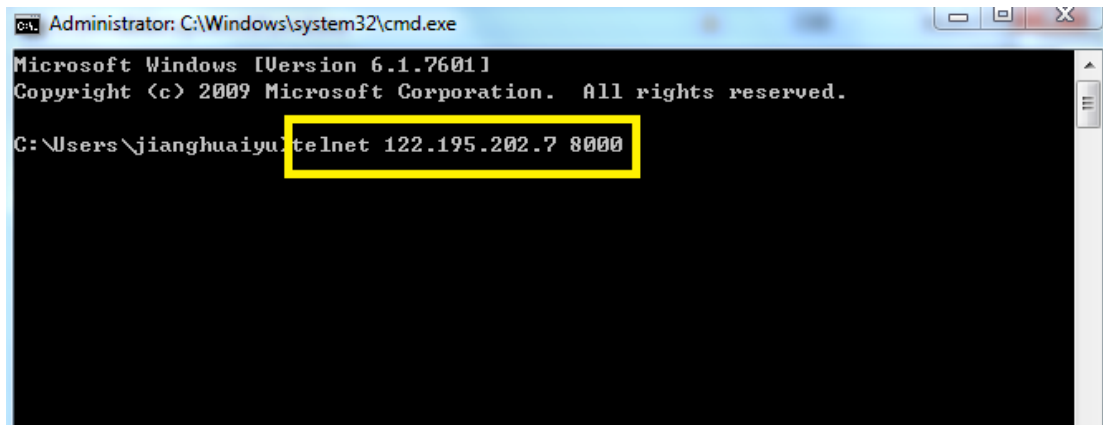


## How to use Telnet command

### **Steps:**

1, The format is: **telnet + blank space + device external IP address + port.**

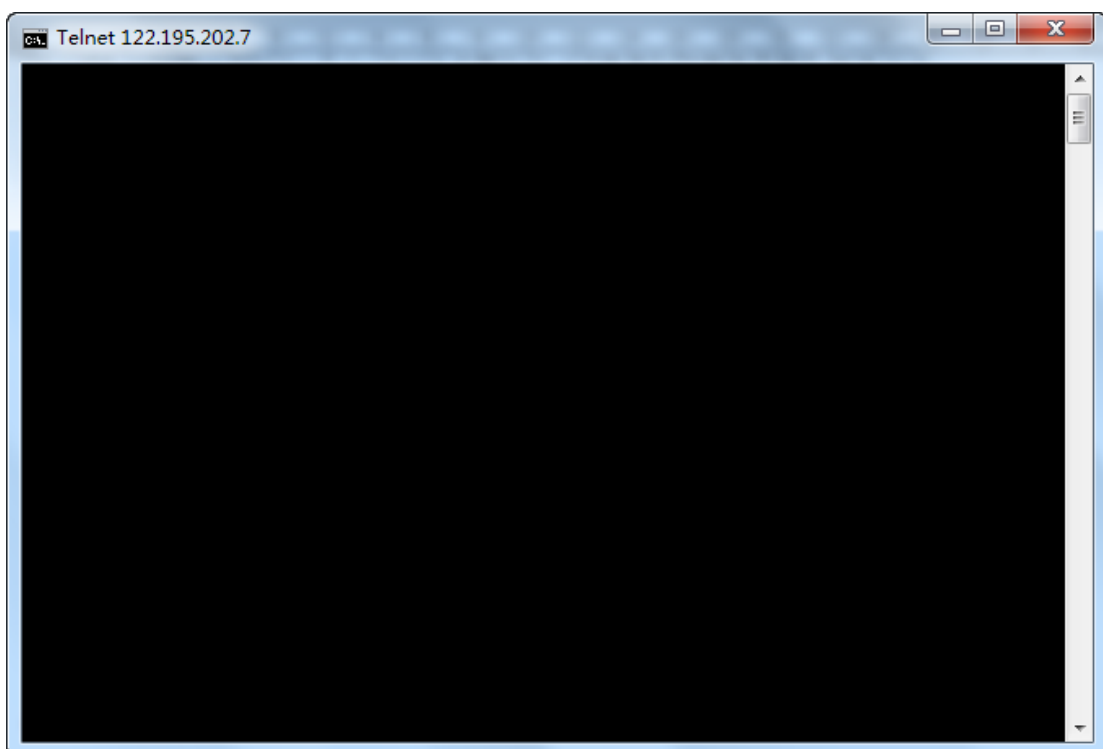
The picture below is an example.



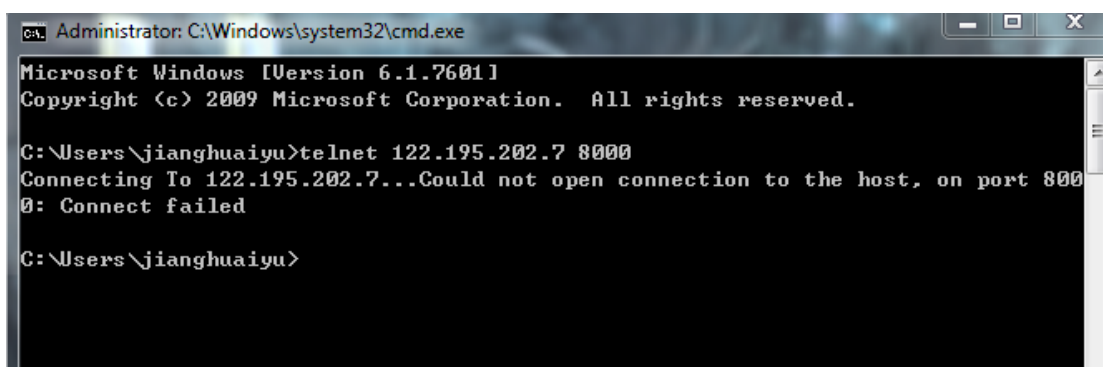
```
Administrator: C:\Windows\system32\cmd.exe
Microsoft Windows [Version 6.1.7601]
Copyright (c) 2009 Microsoft Corporation. All rights reserved.

C:\Users\jianghuaiyu>telnet 122.195.202.7 8000
```

2, if it comes to this interface, it means the port has already been opened.



3, if it says Connect failed, please double check the configuration or change the port and forward it again.



```
Administrator: C:\Windows\system32\cmd.exe
Microsoft Windows [Version 6.1.7601]
Copyright (c) 2009 Microsoft Corporation. All rights reserved.

C:\Users\jianghuaiyu>telnet 122.195.202.7 8000
Connecting To 122.195.202.7...Could not open connection to the host, on port 8000
0: Connect failed

C:\Users\jianghuaiyu>
```

**First Choice for Security Professionals**

**HIKVISION Technical Support**