

# NESS G1 ZWAVE GATEWAY

Part Number: 101-800 | Revision: 1.1



## PAIRING Z-WAVE DEVICES

## PAIRING Z-WAVE DEVICES

You can pair up to 120 Z-Wave devices per system.

1. Select device from the main screen, then tap on the plus icon.

*This section in the installation manual is about paring Z-Wave devices.*

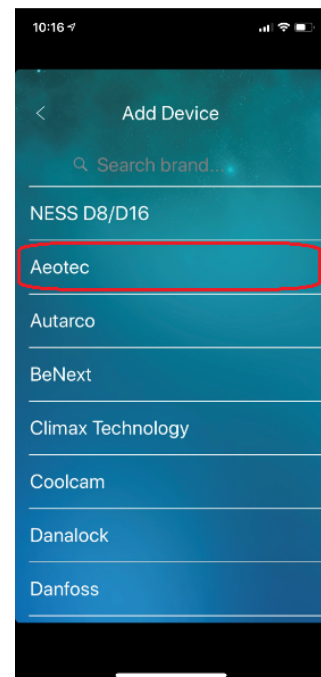
*If adding a D8/D16 panel to the gateway, then please refer to the D8/D16 setup section in this installation manual.*



2. Select the manufacture of the Z-Wave device.

In our example, we are going to pair a Aeotec SmartSwitch 6 (Model ZW096-B09)

Based on our example, we select Aeotec as the manufacture.



3. Select the Z-Wave module you are pairing.

In our example we learning in the Aeotec SmartSwitch 6 (Model ZW096-B09), so we select ZW096 as the model.

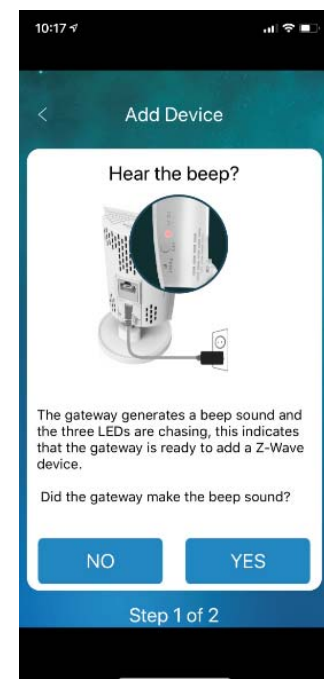
**Note:**

Before you tap on the Z-Wave device in the app, make sure you are near the Z-Wave gateway, as it will play a beep sound and you need to confirm it in the next step.



4. The Z-Wave gateway will then play a beep sound.

If you heard the beep sound, click on 'Yes'.



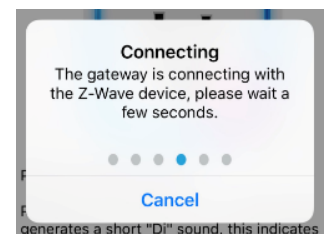
5. Press the Z-Wave learn button on the device you are pairing in.

Depending on the Z-Wave device will depend where the learn button is. Check the installation manual for the Z-Wave device you are learning in to find where the learn button is.

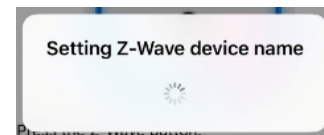
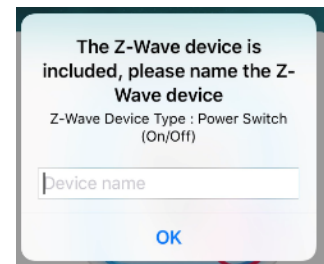
6. When you press the learn button on the Z-Wave device, it will play a small beeping sound on the gateway. If you heard this beeping sound, then click on 'yes' to confirm the paring process.



7. The gateway will then begin the paring process.



8. Give the Z-Wave device a unique name. This is the name of the device you will see in the app.



9. The new device will then display in the app, and pairing is complete.



## EXCLUDING Z-WAVE DEVICES

This section will explain how to remove a Z-Wave device that was paired already in the gateway.

1. Tap on 'Device' from the main screen and tap on the minus button.



2. Select the manufacture of the device you are removing.

In our example, we are going to unpair a Aeotec SmartSwitch 6 (Model ZW096-B09)

Based on our example, we select Aeotec as the manufacture.



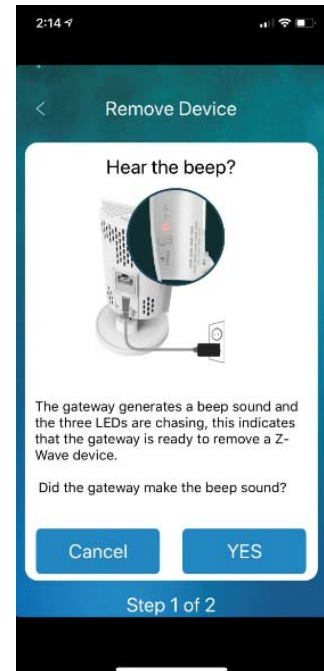
3. Select the Z-Wave model you are removing.

In our example we unpairing in the Aeotec SmartSwitch 6 (Model ZW096-B09), so we select ZW096 as the model.



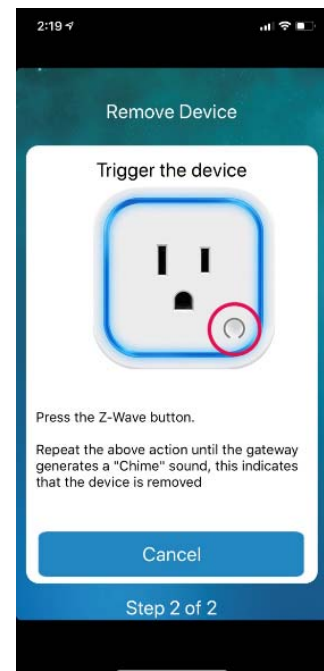
4. The Z-Wave gateway will then play a beep sound.

If you heard the beep sound, click on 'Yes'.



5. Press the pairing button on the Z-Wave device. This will send the signal to remove it from your Z-Wave Gateway.

All devices have different pair/unpair locations, please refer to the installation manual of the Z-Wave device you are unpairing.



6. You will then hear a sound on the Z-Wave gateway.

Your Z-Wave device will then be removed from your Z-Wave Gateway, and ready to be learnt into another Z-Wave Gateway.