

NESS G1 ZWAVE GATEWAY

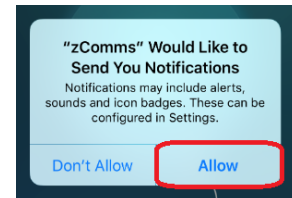
Part Number: 101-800 | Revision: 1.1



SETTING UP GATEWAY FOR FIRST TIME

SETTING UP GATEWAY FOR FIRST TIME

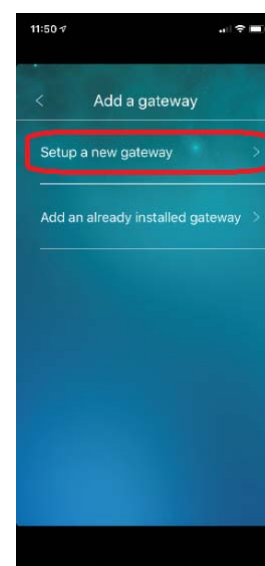
1. Plug in the LAN cable into the back of the Z-Wave gateway, and plug the other end into your computer network, which has a DHCP server running. (Such as you network router).
2. Power up the unit and wait approx 1-2 minutes for it to fully boot up.
3. Download and open the Ness zComms app on your Android or iOS device.
4. If you are prompted, accept the notifications permission. This allows push notifications on your device when an event occurs on the gateway.



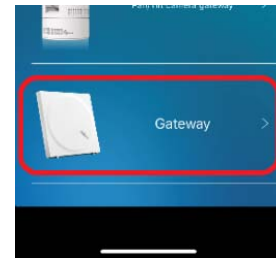
5. Tap on the plus (+) icon in the middle of the screen to add your gateway.



6. Tap on 'Setup a new gateway' from the list.



7. Select 'Gateway' from the list.



8. Confirm the gateway is powered up with a solid Red LED, and click 'Continue'.

9. Enter in your devices details.

Name

Enter any name you like to identify this unit as.

ID

Scan the QR Code on the back of the gateway or scan the QR code that come with this gateway.

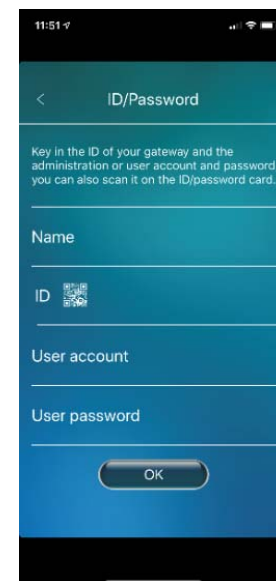
User account

Enter admin as the user account

User Password

Leave this blank.

Tap on OK to begin setting up this gateway.



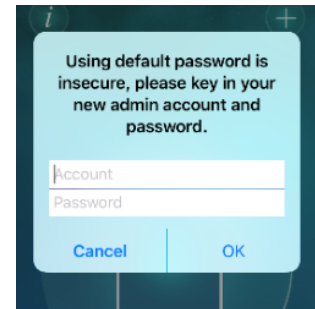
10. If successful it should display a Home icon with your gateway name under it.



11. Tap on your gateway in the app, and it will connect to it.

12. When you connect for the first time, it will ask you to set a new admin username and password.

Enter in a new admin username and password, but make sure you remember what it is for future reference.



13. The gateway is now setup and ready to be used.

If adding a D8/D16 panel to the gateway, then please refer to the D8/D16 setup section in this user manual.

